

CERTIFICATE OF LOCATION OF GOVERNMENT CORNER

SOUTHEAST Corner of Section 2 Township 103N Range 42W 5th P.M.

STATE OF MINNESOTA, County of NOBLES

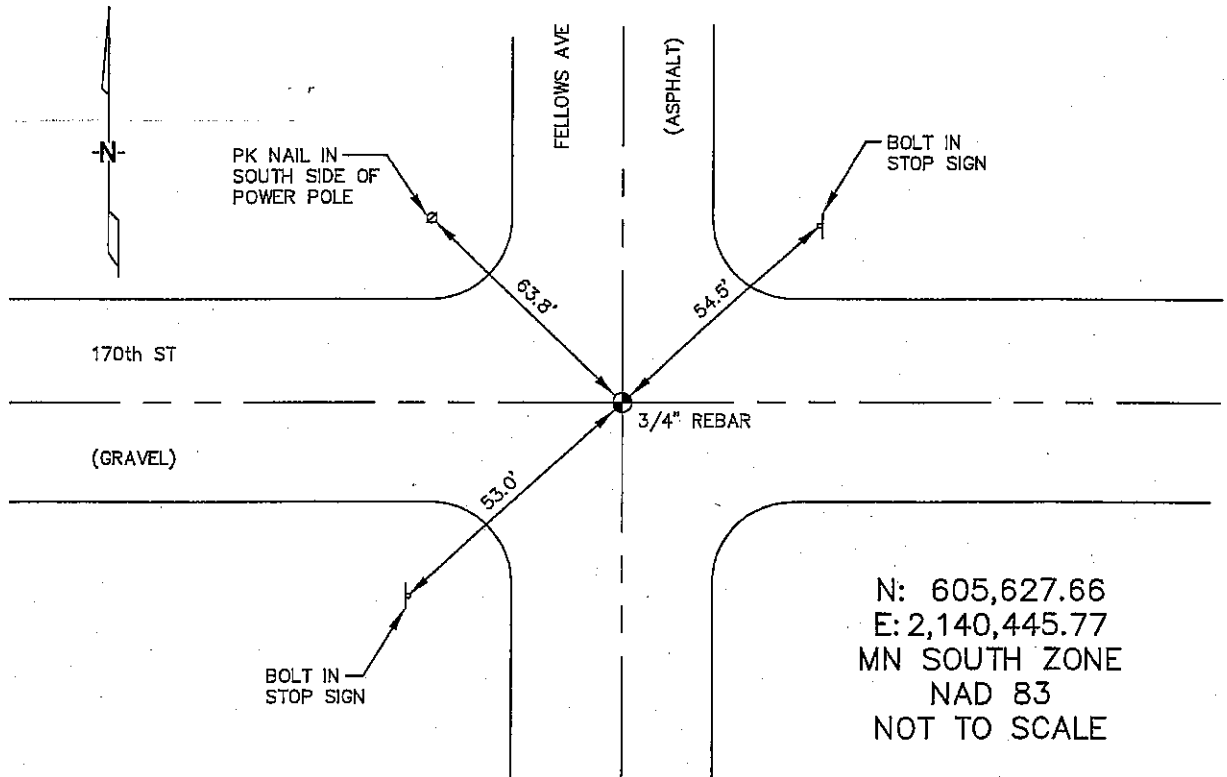
At the corner location shown on the sketch :

On 2/23/2006 found 3/4" REBAR IN ASPHALT, AT INTERSECTION.

left monument as found, lowered monument, removed monument (explain)

On _____ set _____

Sketch of reference ties



Statement of evidence relative to this corner location is on back page

I hereby certify that this document and the data contained herein was prepared by me or under my direct supervision.

Thomas V. Zeff 5/10/06
 Signature Date

Registration No. 44563
 Land Surveyor, Professional Engineer
 County Surveyor, County Engineer

OFFICE OF THE COUNTY RECORDER

County of _____

I hereby certify that this document was filed in the Co. Recorders office at _____ .M. on the _____ day of _____ A.D. , 20

County Recorder _____
 By _____, Deputy

DOCUMENT NO. _____

STATEMENT OF EVIDENCE:

SOUTHEAST CORNER, SECTION 2, T. 103 N., R. 42 W.,
NOBLES COUNTY, MINNESOTA

1868 Jewett & Howe, US. Deputy Surveyors, monumented corner.

2/23/2006 Uiteig Engineers, Inc., Survey Crew, Dennis Lavallie Party Chief, found
Ties: NE-54.5' to steel bolt in steel Stop Sign post;
SW-53.0' to steel bolt in steel Stop Sign post;
NW-63.8' to PK Nail in south side, wood power pole.