

CERTIFICATE OF LOCATION OF GOVERNMENT CORNER

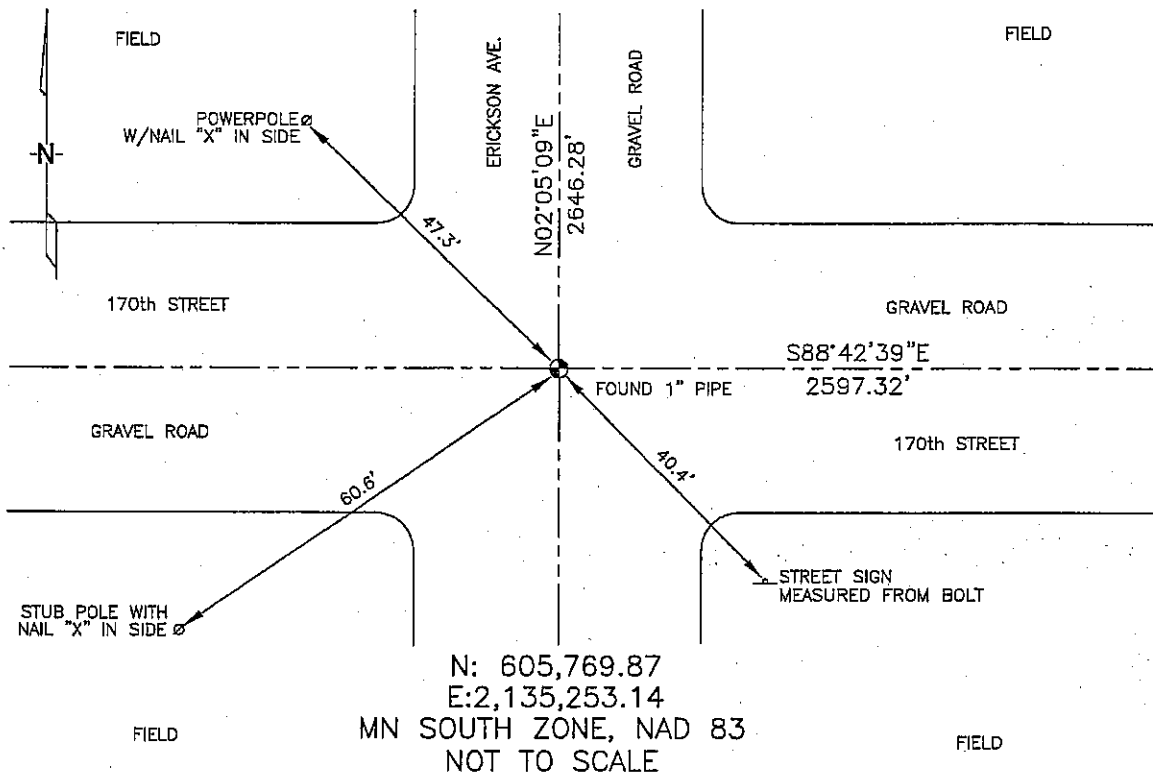
SOUTHWEST Corner of Section 2, Township 103, Range 42, 5TH P.M.

STATE OF MINNESOTA, County of NOBLES

At the corner location shown on the sketch :

- On 3/8/2006 found A 1" IRON PIPE @ INTERSECTION OF
GRAVEL ROADS.
 left monument as found, lowered monument, removed monument (explain)
- On _____ set _____

Sketch of reference ties



Statement of evidence relative to this corner location is on back page

I hereby certify that this document and the data contained herein was prepared by me or under my direct supervision.

Thomas V. Zeff 5/1/06
 Thomas V. Zeff Date

Registration No. 44563
 Land Surveyor, Professional Engineer
 County Surveyor, County Engineer

OFFICE OF THE COUNTY RECORDER

County of _____

I hereby certify that this document was filed in the Co. Recorders office at _____ M. on the _____ day of _____ A.D. , 20

County Recorder _____
 By _____, Deputy

DOCUMENT NO. _____

STATEMENT OF EVIDENCE:

SOUTHWEST CORNER, SECTION 2, T. 103 N., R. 42 W.,
NOBLES COUNTY, MINNESOTA

- 1868 Jewett & Howe, US. Deputy Surveyors, monumented corner.
- 1897 Nobles Co. Highway Dept., found stake; no ties.
- 1902 Nobles Co. Highway Dept., set stone; no ties.
- 1939 Nobles Co. Highway dept., found stone; no ties.
- 3/8/2006 Ulteig Engineers, Inc., Survey Crew, Brian Payne Party Chief, found
1" iron pipe at intersection of gravel roads.
Ties: NW-47.3' to nailed "X" on side of power pole;
SW-60.6' to nailed "X" on side of stub pole;
SE-40.4' to street sign, 2nd bolt from bottom;
N-2646.28' to West 1/4 corner, Section 2;
E-2597.32' to South 1/4 corner, Section 2.