

CERTIFICATE OF LOCATION OF GOVERNMENT CORNER

WEST 1/4 Corner of Section 2, Township 103, Range 42, 5TH P.M.

STATE OF MINNESOTA, County of NOBLES

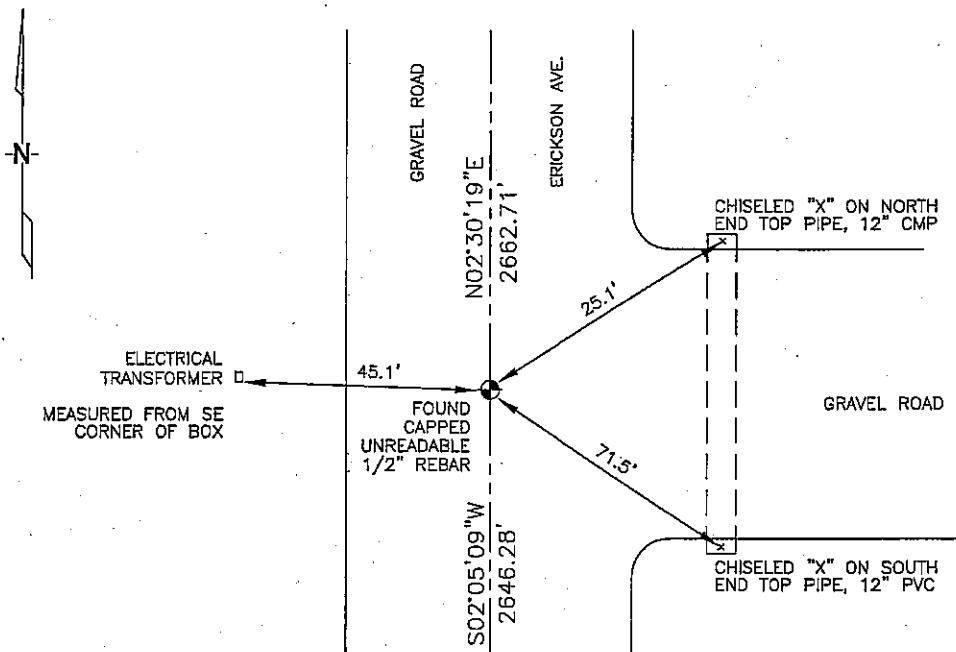
At the corner location shown on the sketch :

On 3/8/2006 found A 1/2" REBAR WITH AN UNREADABLE CAP.

left monument as found, lowered monument, removed monument (explain)

On _____ set _____

Sketch of reference ties



N: 608,414.40
E: 2,135,349.46
MN SOUTH ZONE, NAD 83
NOT TO SCALE

Statement of evidence relative to this corner location is on back page

I hereby certify that this document and the data contained herein was prepared by me or under my direct supervision.

Thomas V. Zell 4/18/06
Thomas V. Zell Date

Registration No. 44563

Land Surveyor, Professional Engineer

County Surveyor, County Engineer

OFFICE OF THE COUNTY RECORDER

County of _____

I hereby certify that this document was filed in the Co. Recorders office at _____ M. on the day of _____ A.D. , 20

County Recorder _____

By _____, Deputy

DOCUMENT NO. _____

STATEMENT OF EVIDENCE:

WEST 1/4 CORNER, SECTION 2, T. 103 N., R. 42 W.,
NOBLES COUNTY, MINNESOTA

- 1868 Jewett & Howe, US. Deputy Surveyors, monumented corner.
- 1902 Nobles Co. found stake, no ties.
- 3/09/2006 Ulteig Engineers, Inc., Survey Crew, Brian Payne Party Chief,
found an unreadable capped 1/2" rebar in gravel road
Ties: NE-25.1' to chiseled "X" on top, north end, 12" C.M.P.
SE-71.5' to chiseled "X" on top, south end, 12" C.M.P.
N-2662.71' to NW corner, Section 2.
S-2646.28' to SW corner, Section 2.