

5 1/4  
Sec 2  
103  
43

COPY

Index E-19

### CERTIFICATE OF LOCATION OF GOVERNMENT CORNER

NORTH QUARTER Corner of Section 11, Township 103N, Range 43W

5th Principal Meridian, State of Minnesota, County of Nobles.

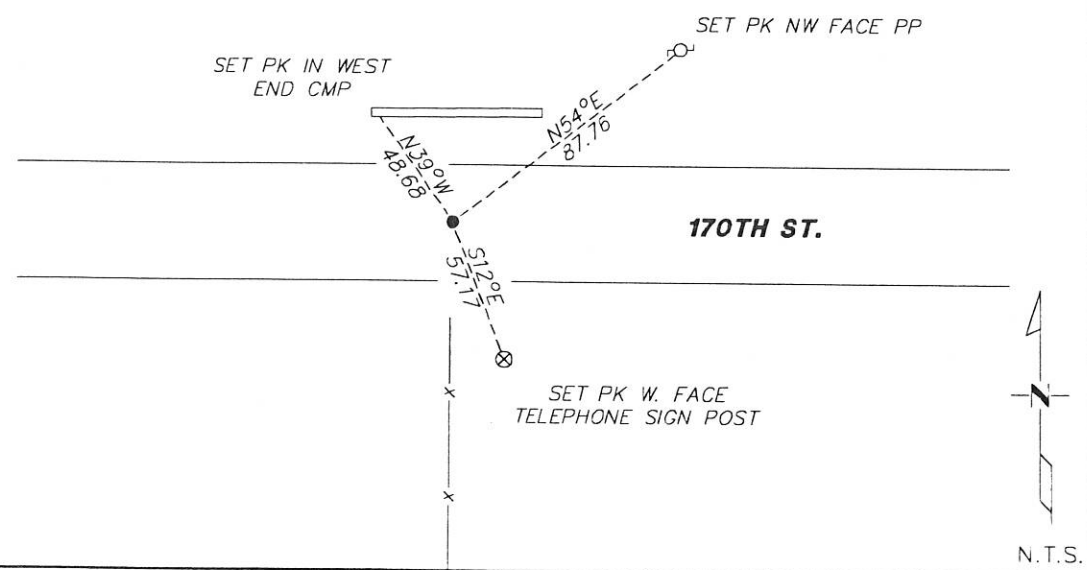
At the corner location shown on the sketch:

On 12/01/17 found a PK NAIL ON CENTERLINE AND A FENCE LINE TO THE SOUTH

left monument as found     lowered monument     removed monument (explain)

On \_\_\_\_\_ placed a \_\_\_\_\_

#### SKETCH OF REFERENCE TIES



Statement of evidence for this corner location is on back of this page.

I hereby certify that this document was researched and prepared by me or under my direct supervision and that I am a licensed Land Surveyor under the laws of the State of Minnesota.

Signature [Handwritten Signature]

Date 1/8/18 License No. 49563

Title:  
 Land Surveyor     Professional Engineer  
 County Surveyor     County Engineer

DOCUMENT NUMBER A 357424  
Certified, Filed and/or Recorded on  
March 01, 2018 9:43 AM

[Handwritten Signature: Lynn Wilson]  
NOBLES COUNTY RECORDER  
LYNN M. WILSON  
507-295-8258

**Statement of Evidence:**

E-19

North Quarter Corner of Section 11, Township 103 North, Range 43 West, 5<sup>th</sup> Principal Meridian, Nobles County, Minnesota.

1869-Deputy Surveyor set a post in mound with pits.

1897- Nobles County Highway Department "Corner Ties Book" calls for a stone to mark the corner location.

1941- Nobles County Highway Department "Corner Ties Book" calls for an iron pin to mark the corner location.

1965- Nobles County Highway Department "Corner Ties Book" calls for a stake to mark the corner location.

1966- Nobles County Highway Department "Corner Ties Book" calls for a stake to mark the corner location and set ties

2017- Westwood Professional Services recovered PK nail with a magnetic indication under it on centerline and a fence line to the south. Ties were found or set as shown on the front of this certificate

Analysis of the recovered data, field evidence and survey measurements, indicates that the monument found is the correct perpetuation of this corner. For additional information concerning this corner please contact Westwood Professional Services.

8/18/11