

S1/4  
Sec 3  
103  
43

COPY

Index E-15

### CERTIFICATE OF LOCATION OF GOVERNMENT CORNER

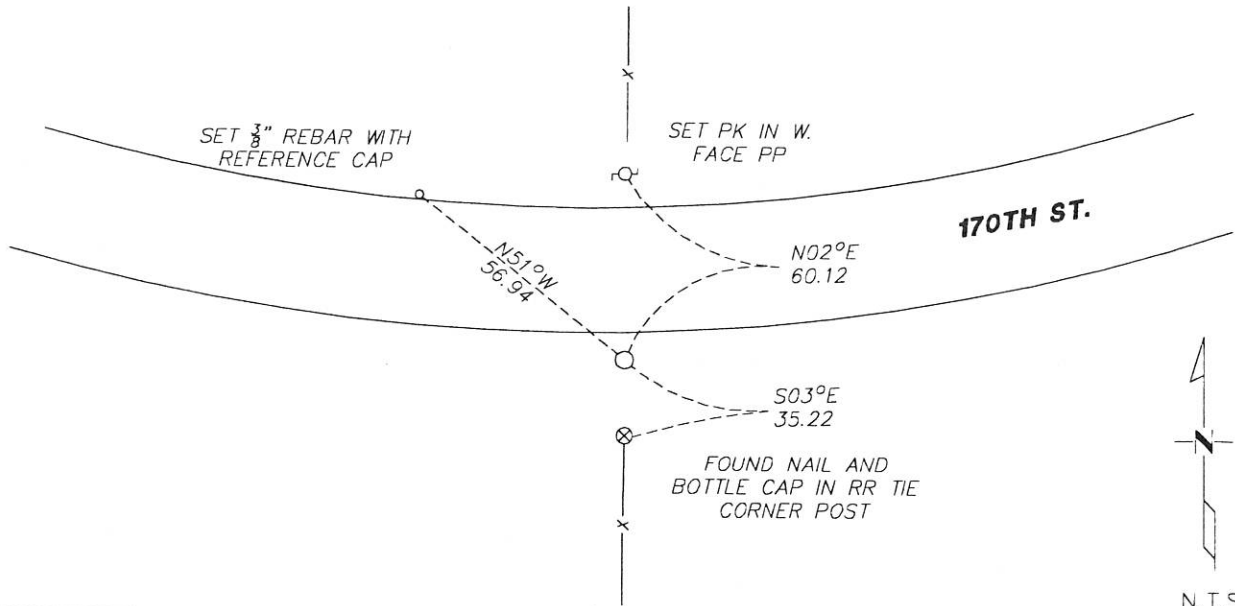
NORTH QUARTER Corner of Section 10, Township 103N, Range 43W

5th Principal Meridian, State of Minnesota, County of Nobles.

At the corner location shown on the sketch:

- On \_\_\_\_\_ found a \_\_\_\_\_  
DATE
- left monument as found     lowered monument     removed monument (explain)
- On 12/28/17 placed a 1/2" REBAR CAPPED LS 49563 FROM HIGHWAY ROAD PLANS  
DATE

#### SKETCH OF REFERENCE TIES



Statement of evidence for this corner location is on back of this page.

I hereby certify that this document was researched and prepared by me or under my direct supervision and that I am a licensed Land Surveyor under the laws of the State of Minnesota.

Signature [Handwritten Signature]

Date 1/8/18 License No. 49563

Title:

- Land Surveyor     Professional Engineer
- County Surveyor     County Engineer

DOCUMENT NUMBER A 357422  
Certified, Filed and or Recorded on  
March 01, 2018 9:33 AM

[Handwritten Signature] RS

NOBLES COUNTY RECORDER  
LYNN M. WILSON  
507-295-5250

**Statement of Evidence:**

E-15

North Quarter Corner of Section 10, Township 103 North, Range 43 West, 5<sup>th</sup> Principal Meridian, Nobles County, Minnesota.

1869-Deputy Surveyor set a post in mound with pits.

1941- Nobles County Highway Department "Corner Ties Book" calls for a stake to mark the corner location.

1950 - Highway plans show this corner as the PI for the highway

1965- Nobles County Highway Department "Corner Ties Book" calls for a placed an iron pin to mark the corner the corner location.

1966- Nobles County Highway Department "Corner Ties Book" calls for an iron pin to mark the corner location and set ties.

2017- Westwood Professional Services did not recover a monument and located centerline to the east and west to define the highway alignment. A ½" rebar capped 49563 was placed per the highway plans to mark the corner. Ties were found or set as shown on the front of this certificate.

Analysis of the recovered data, field evidence and survey measurements, indicates that the monument found is the correct perpetuation of this corner. For additional information concerning this corner please contact Westwood Professional Services.

8/18/11