

SW
sec 3
103
43

COPY

Index E-13

CERTIFICATE OF LOCATION OF GOVERNMENT CORNER

NORTHEAST Corner of Section 9, Township 103N, Range 43W

4th Principal Meridian, State of Minnesota, County of Nobles.

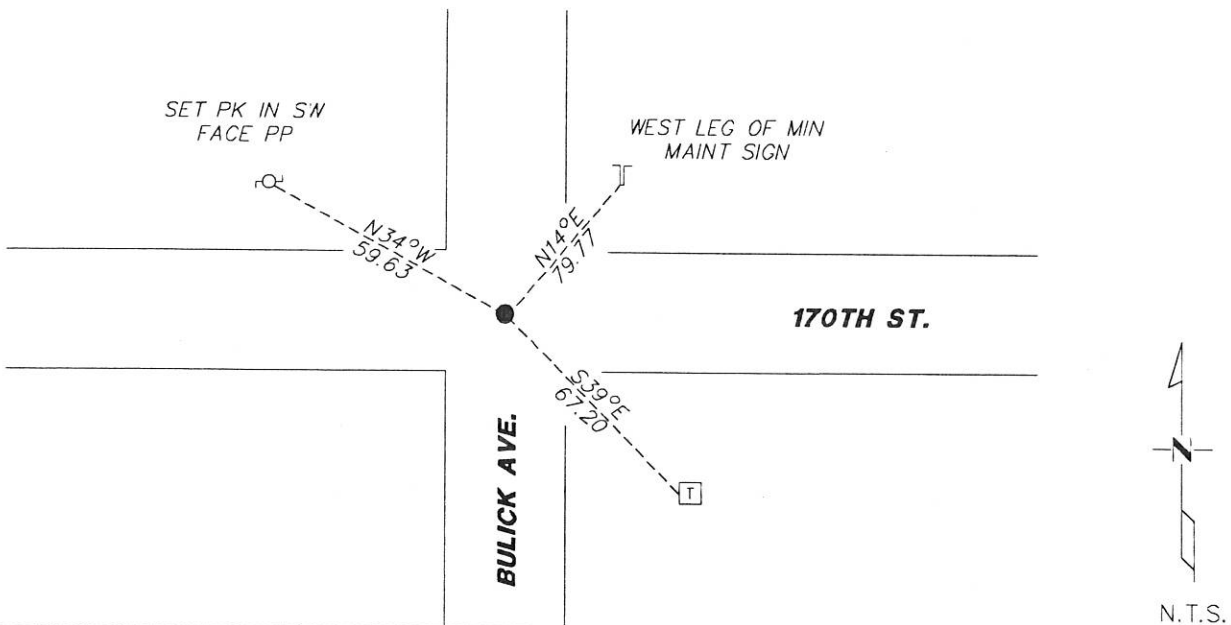
At the corner location shown on the sketch:

On 12/01/17 found a PK NAIL AT THE CENTERLINE INTERSECTION
DATE

left monument as found lowered monument removed monument (explain)

On _____ placed a _____
DATE

SKETCH OF REFERENCE TIES



Statement of evidence for this corner location is on back of this page.

I hereby certify that this document was researched and prepared by me or under my direct supervision and that I am a licensed Land Surveyor under the laws of the State of Minnesota.

Signature [Handwritten Signature]

Date 1/8/18 License No. 49563

Title:

- Land Surveyor Professional Engineer
- County Surveyor County Engineer

DOCUMENT NUMBER A 357421
Certified, Filed and or Recorded on
March 01, 2018 9:30 AM

[Handwritten Signature]

NOBLES COUNTY RECORDER
LYNN M. WILSON
307 298-8258

Pages: 2

Statement of Evidence:

E-13

Northeast Corner of Section 9, Township 103 North, Range 43 West, 5th Principal Meridian, Nobles County, Minnesota.

1869-Deputy Surveyor set a post in mound with pits.

1923- Nobles County Highway Department "Corner Ties Book" calls for a stone and a placed wood stake to mark the corner location.

1941- Nobles County Highway Department "Corner Ties Book" calls for a stake to mark the corner location.

1965- Nobles County Highway Department "Corner Ties Book" calls for a placed iron pin to mark the corner location.

1966- Nobles County Highway Department "Corner Ties Book" calls for a placed iron pin after an overlay to mark the corner location.

1979- Nobles County Highway Department "Corner Ties Book" calls for an iron pin to mark the corner location.

1990- Nobles County Highway Department "Corner Ties Book" shows ties for the corner

2003- Nobles County Highway Department "Corner Ties Book" calls for a found iron pin and a PK nail set after an overlay to mark the corner location.

2017- Westwood Professional Services recovered a PK nail with a magnetic indication under it at the centerline intersection. Ties were found or set as shown on the front of this certificate

Analysis of the recovered data, field evidence and survey measurements, indicates that the monument found is the correct perpetuation of this corner. For additional information concerning this corner please contact Westwood Professional Services.

[Handwritten signature and date]
2/18/17