

UNITED STATES PUBLIC LAND SURVEY CORNER CERTIFICATE FOR

Land survey monuments situated in Section 24, Township 103 North, Range 43 West, of the Fifth Principal

Meridian, Nobles County, Minnesota..

Previously recorded in N/A in County Recorder's Office.

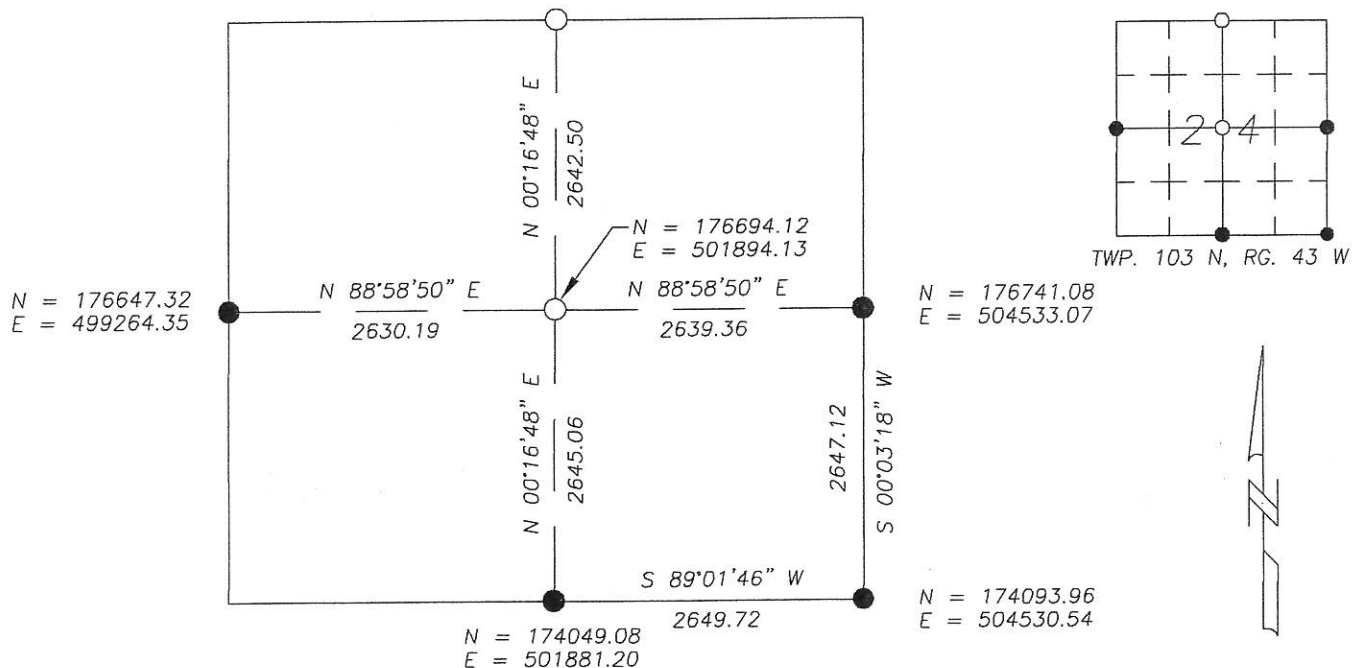
(Show reason for preparing this certificate, the evidence and detailed procedure used in establishing the corner position & monumentation found or placed.)
MONUMENT DESCRIPTION AND REMARKS: On May 9, 2013 we dug with backhoe for North 1/4 Corner &

found no evidence of corner. Best evidence is fence to North & South and centerline of road. I therefore
set a 5/8" Iron stake with survey cap 23008 at centerline of Township Road in line with fences North &
South as accepted corner. County Highway records show no information for corner. I also set 5/8" Iron
stake at center of section by intersection of opposite quarter section corners as per PLS instructions.

NOBLES COUNTY COORDINATES NAD 83 (2007)

PLAN-VIEW

N = 179336.63
E = 501907.04



I hereby certify that this land surveying document was prepared and related survey work was performed by me or under my direct supervision and that I am a duly licensed Land Surveyor under the laws of the State of Minnesota.

Perry L. Zieske 5-14-13
Signature Date
Perry Zieske
License number 23008

Sheet 1 of 1

Corners to be Indexed

Corners	Section	Township	Range
N 1/4	24	103	43
CTR.	24	103	43