

PREPARED BY: DGR & ASSOCIATES CO., 1302 S. UNION STREET, P.O. BOX 511, ROCK RAPIDS, IOWA 51246 (712) 472-2531

UNITED STATES PUBLIC LAND SURVEY CORNER CERTIFICATE  
OF

Land Survey Monuments situated in Section 24, Township 103, Range 43, of the Fifth Principal Meridian, NOBLES County, MINNESOTA.

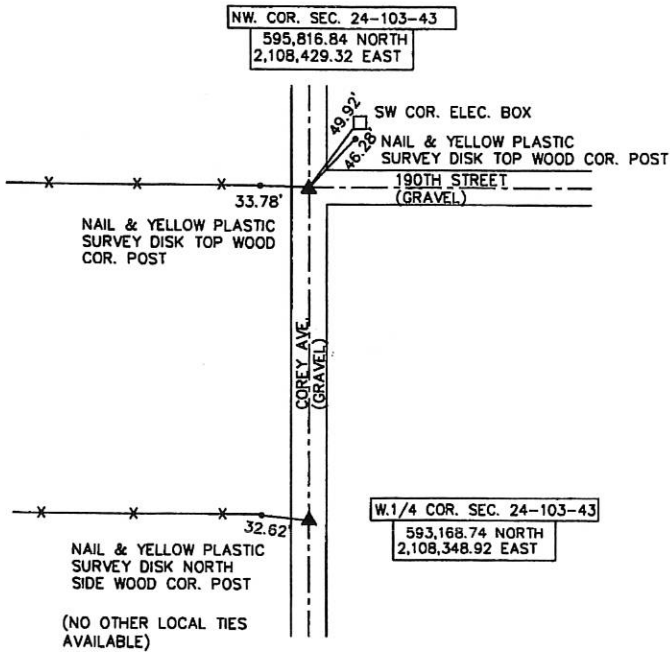
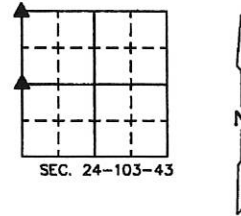
Monument Description and Remarks:

NW CORNER—DUG WITH BACKHOE AND FOUND 3" WIDE BY 5" HIGH STONE, 32" DEEP NEAR C.L. GRAVEL T-ROAD EAST, AND IN LINE WITH FENCE WEST. SET 1/2" X 24" REBAR WITH YELLOW SURVEYOR I.D. CAP NO. 17518 OVER STONE.

W.1/4 CORNER— DUG WITH BACKHOE AND FOUND 3" WIDE BY 8" HIGH STONE, 8" DEEP, NEAR C.L. GRAVEL ROAD, ABOUT 2' SOUTH OF FENCE WEST. SET 1/2" X 12" REBAR WITH YELLOW SURVEYOR I.D. CAP ALONG NORTH SIDE OF STONE.

PLAN - VIEW

COORD'S SHOWN ARE MINNESOTA SPC, SOUTH ZONE, US FOOT NAD 83 (1996)



I hereby certify that this land surveying document was prepared and the related survey work was performed by me or under my direct personal supervision and that I am a duly licensed Land Surveyor under the laws of the State of Minnesota.

Signature: Kevin D. Jongerius  
Name typed or printed: KEVIN D. JONGERIUS  
Date: MAY 31, 2013 LIC. No. 17518



SEAL

Corners	List Corners to be Indexed Section	Twp	Range
NW COR.	24	103	43
W.1/4 COR.	24	103	43