

CERTIFICATE OF LOCATION OF GOVERNMENT CORNER

3¹⁴ CORNER OF SECTION 10 TOWNSHIP, 103 N RANGE, 43 W 5TH P.M.

STATE OF MINNESOTA, COUNTY OF NOBLES

AT THE CORNER LOCATION SHOWN ON THE SKETCH

ON 8/2/07 FOUND A STONE

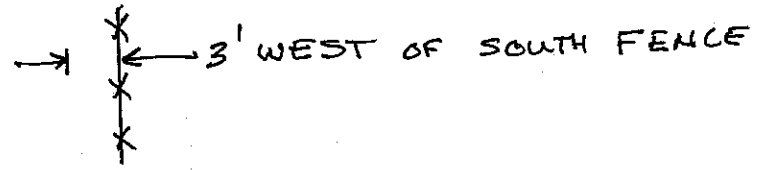
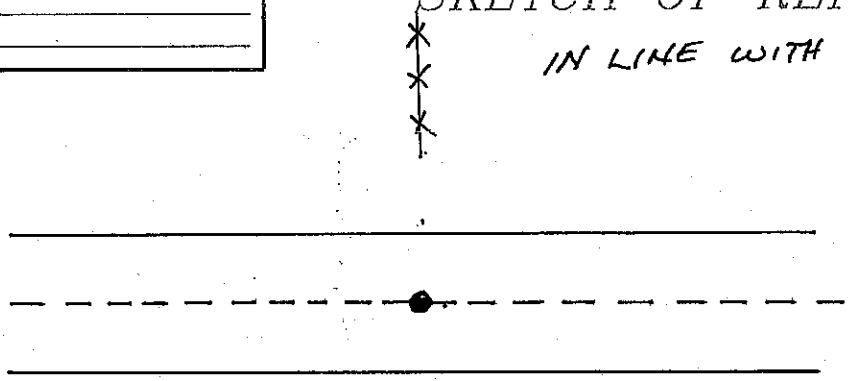
LEFT MONUMENT AS FOUND LOWERED MONUMENT REMOVED MONUMENT (EXPLAIN)

ON 8/8/07 PLACED A 5/8" IRON STAKE WITH
KOR 22461 CAP

SECTION CORNER COORDINATES
NORTHING _____
EASTING _____

SKETCH OF REFERENCE

IN LINE WITH NORTH FENCE



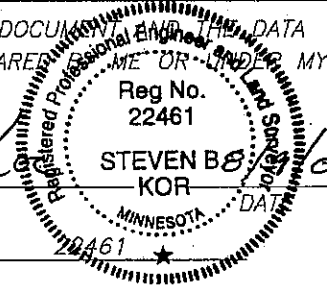
COORDINATES ARE NAD '83 US STATE PLANE MINNESOTA SOUTH

NGS BENCHMARK I.D. _____	NGS BENCHMARK I.D. _____
NORTHING _____	NORTHING _____
EASTING _____	EASTING _____

STATEMENT OF EVIDENCE RELATIVE TO THIS CORNER LOCATION IS ON PAGE 2.

I HEREBY CERTIFY THAT THIS DOCUMENT AND THE DATA CONTAINED HEREIN WAS PREPARED BY ME OR UNDER MY DIRECT SUPERVISION.

Steven B. Kor
SIGNATURE



MN. LICENSE NO. 22461

LAND SURVEYOR PROFESSIONAL ENGINEER
 COUNTY SURVEYOR COUNTY ENGINEER

OFFICE OF THE COUNTY RECORDER

I HEREBY CERTIFY THAT THIS DOCUMENT WAS FILED IN THE COUNTY RECORDERS OFFICE

AT _____ ON THE _____ DAY OF _____

COUNTY RECORDER _____

BY _____ DEPUTY

DOCUMENT NO. _____