

CERTIFICATE OF LOCATION OF GOVERNMENT CORNER

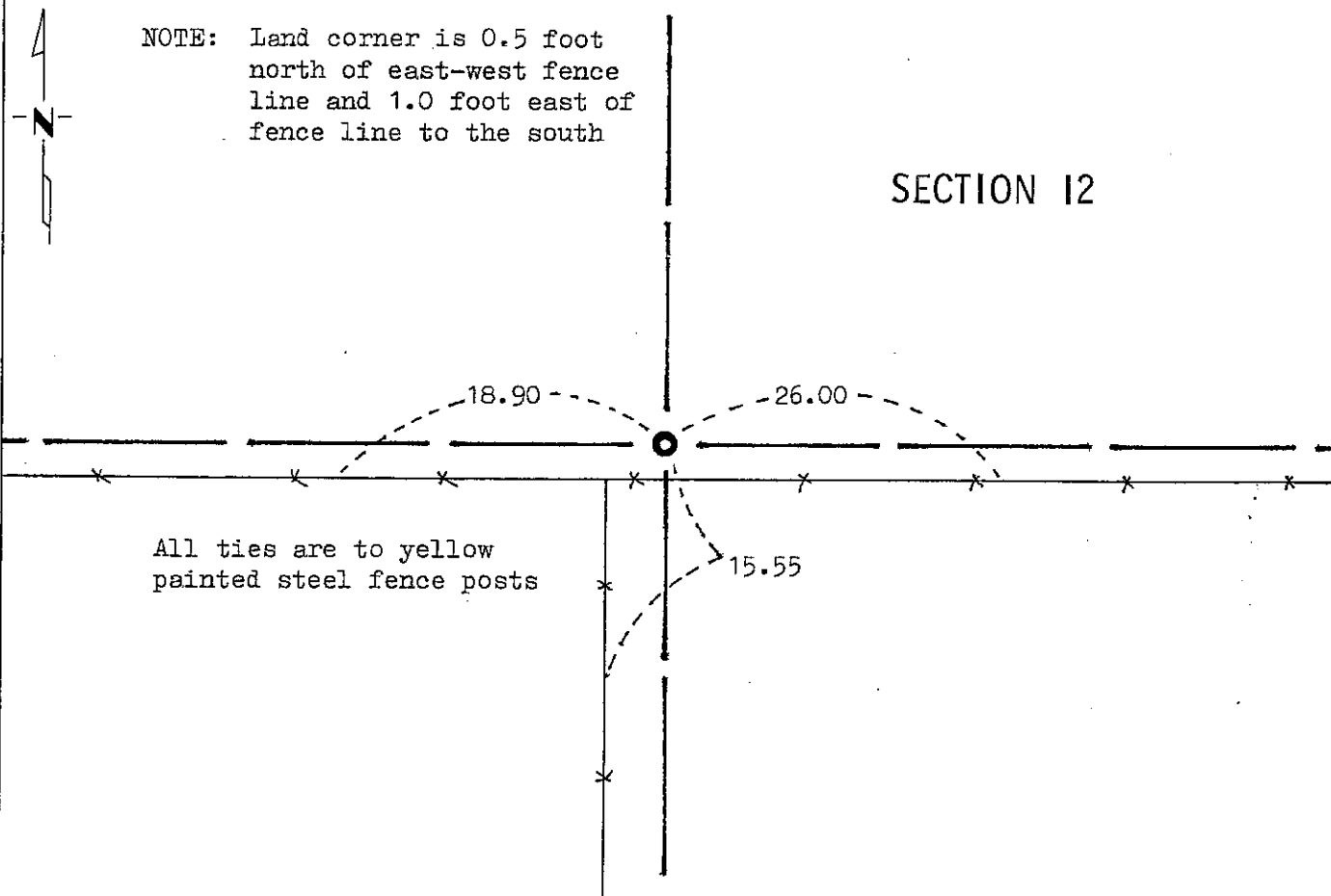
CENTER Corner of Section 12, Township 104N, Range 40W, 5 P.M.

STATE OF MINNESOTA, County of NOBLES

At the corner location shown on the sketch:

- On Nov. 9, 1981 found a 18 inch by 15 inch by 12 inch stone down 1.5 foot
DATE
- left monument as found, lowered monument, removed monument (explain)
- On Nov. 9, 1981 placed a M.H.D. cast iron monument flush with surface directly
DATE
over stone. "+" in cast iron monument.

SKETCH OF REFERENCE TIES



Statement of evidence relative to this corner location is on back of page.

I hereby certify that this document and the data contained herein was prepared by me or under my direct supervision.

Allen E. Schoon 4-5-91
SIGNATURE DATE

Registration No. 11858
 Land Surveyor, Professional Engineer
 County Surveyor, County Engineer

OFFICE OF THE COUNTY RECORDER
County of Nobles

I hereby certify that this document was filed in the Co. Recorders office at 9:20 A. M. on the 12th day of September A.D., 19 91

County Recorder Jayce Howard
By _____, Deputy

DOCUMENT NO. 245447

Statement of Evidence: Center Quarter Corner of Section 12 T104N R40W 5th P.M.

- 1868 The original Public Land Survey was run in 1868 by Deputy Surveyors Jewett and Howe, who surveyed the section lines of the township interior. The center section was not set by the deputy surveyors, but were set later by other surveyors.
- June 21, 1900 M. S. Smith, Nobles County Surveyor, made a survey in Sections 12 and 13 for B. J. Eckman. The Plat of the survey shows that a stone is at the center of the Section.
- Nov. 9, 1981 Minnesota Department of Transportation field survey crew using a backhoe found an 18 inch by 15 inch by 12 inch stone down 1.5 foot. They placed a Minnesota Highway Department cast iron monument directly over the center of the stone and flush with the surface.
- The inplace location of the stone is compatible with the occupation lines within the section. An analysis of the Statement of Evidence and the field measurements indicate that the stone is in a reasonable location for the corner.
- For additional information, including field measurements and photographs, contact the Minnesota Department of Transportation in Windom, Minnesota.