

CERTIFICATE OF LOCATION OF GOVERNMENT CORNER

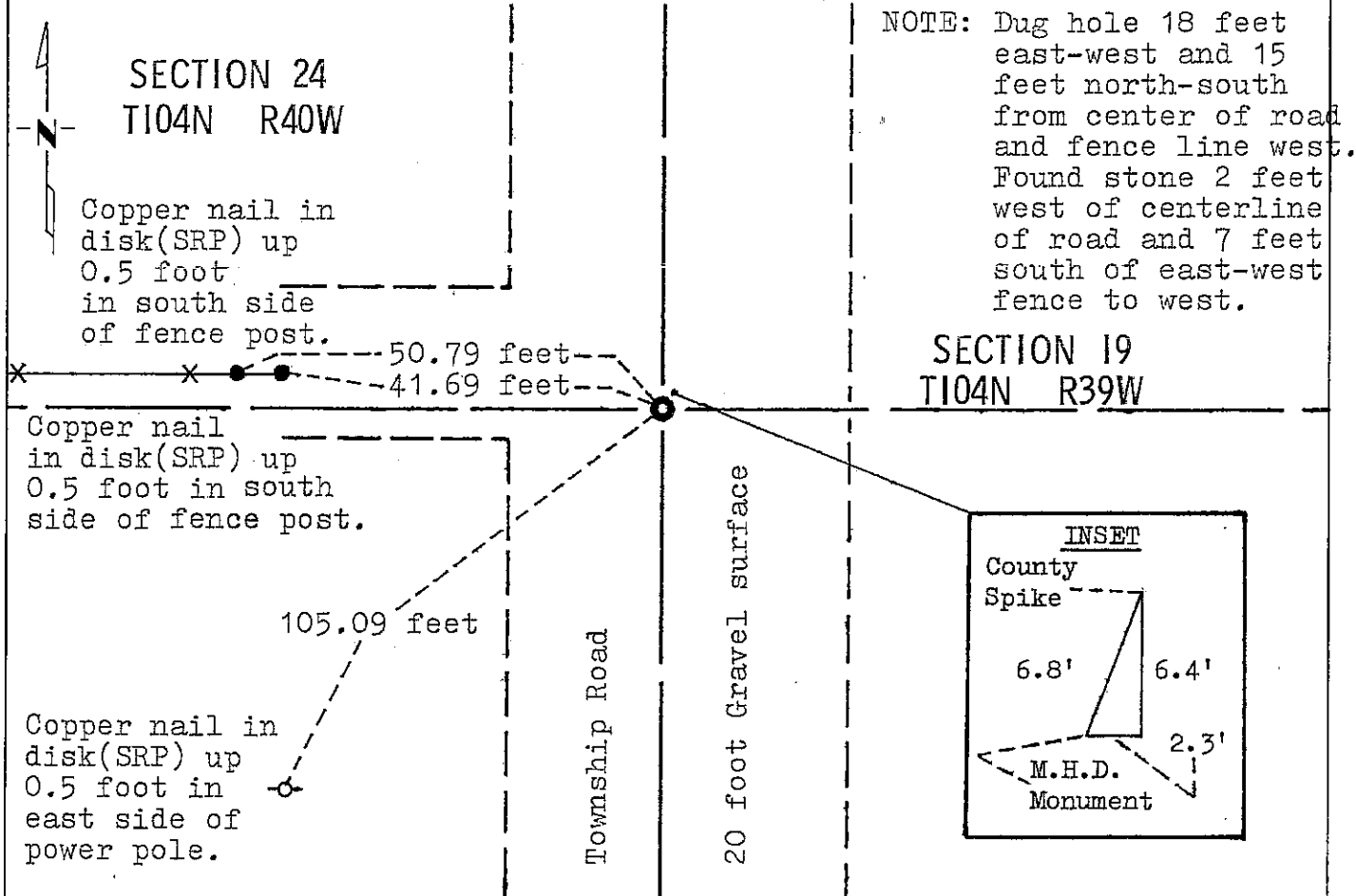
EAST QUARTER Corner of Section 24, Township 104, Range 40, 5 P.M.

STATE OF MINNESOTA, County of NOBLES

At the corner location shown on the sketch:

- On Nov. 4, 1980 found a stone with dimensions of 10 inches by 18 inches by 14 inches in natural black dirt down 3.9 feet below surface.
DATE
 left monument as found, lowered monument, removed monument (explain)
- On Nov. 11, 1980 placed a M.H.D. Cast Iron Monument with chisled "X" down 0.3 foot below surface directly over high point of stone.
DATE

SKETCH OF REFERENCE TIES



Statement of evidence relative to this corner location is on back of page.

I hereby certify that this document and the data contained herein was prepared by me or under my direct supervision.

Allan E. Schorn 3-19-91
SIGNATURE DATE

Registration No. 11858

- Land Surveyor, Professional Engineer
- County Surveyor, County Engineer

OFFICE OF THE COUNTY RECORDER
County of Nobles

I hereby certify that this document was filed in the Co. Recorders office at 9:10 A. M. on the 12th day of September A.D., 19 91

County Recorder Chris Howard

By _____, Deputy

DOCUMENT NO. 245445

Statement of Evidence: East Quarter Corner of Section 24 T104N R40W 5th P.M.

- July 7, 1867 The original Public Land Survey between Ranges 39W and 40W was run in 1867 by Deputy Surveyor Thomas B. Walker, and his notes read: " $\frac{1}{4}$ S. Cor. post in mound & etc."
- Oct. 19, 1891 Milton S. Smith, Nobles County Surveyor, made a survey in Section 19 for John Dunn. He found and used the "original $\frac{1}{4}$ post" between Section 19 and 24.
- June 22, 1900 M. S. Smith, Nobles County Surveyor and J. W. Wolstencroft made a survey in Section 19-104-39, and notes on a drawing of the survey do not indicate what was in place at the corner but show a distance of 2663 feet to section corners to the north and to the south.
- June 23, 1900 J. W. Wolstencroft in a survey in Section 24 does not describe the land corner monument but indicates distances of 2663 feet to the Northeast corner and 2663 feet to the Northeast Corner of Section 25.
- Nov. 8, 1980 Nobles County Highway Department searched for the land corner, and found nothing. Needed land corner for a bridge survey so they assumed the location of the quarter corner.
- Nov. 11, 1980 A Minnesota Department of Transportation field survey crew using a tractor mounted backhoe found a 10 inch by 18 inch by 14 inch stone in natural ground 3.9 feet below a gravel road surface. The soil above the stone appears to have been disturbed previously because small stones are mixed in with the soil. They placed a Minnesota Highway Department Cast Iron Monument 0.3 foot below the gravel road surface and directly over the stone to perpetuate the corner.

The in place location of the found stone is in agreement with occupation lines within the section. An analysis of the evidence and field measurements indicate that the found stone is in a reasonable location for the corner.

For additional information, including field measurements and photographs, contact the Minnesota Department of Transportation in Windom, Minnesota.