

CERTIFICATE OF LOCATION OF GOVERNMENT CORNER

EAST QUARTER Corner of Section 25, Township 104, Range 40, 5 P.M.

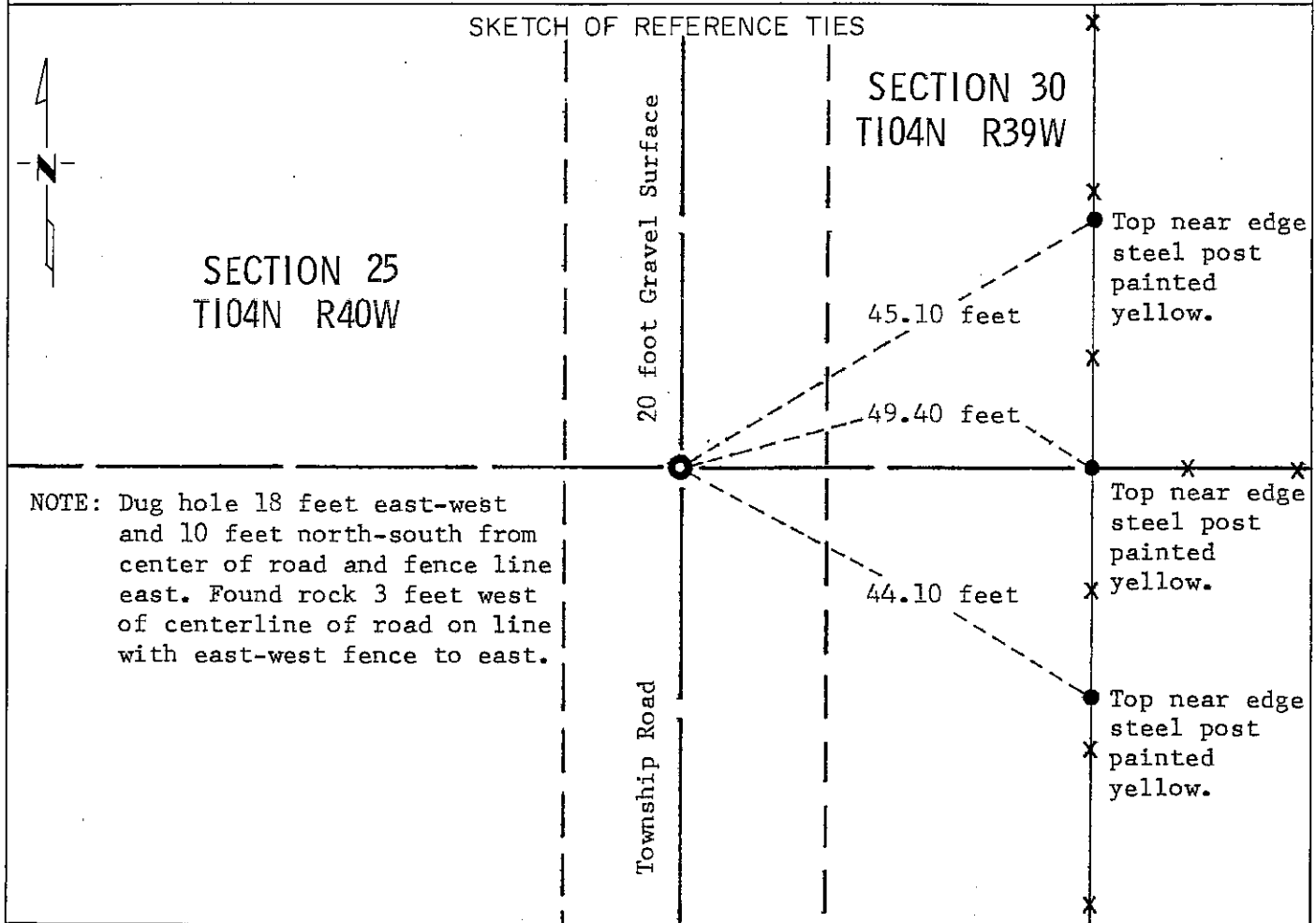
STATE OF MINNESOTA, County of NOBLES

At the corner location shown on the sketch:

On Nov. 5, 1980 found a stone 9 inches by 11 inches by 9 inches down 50
DATE
inches below surface.

left monument as found, lowered monument, removed monument (explain)

On Nov. 5, 1980 placed a M.H.D. Cast Iron Monument with chisled "X" down 0.3
DATE
foot below surface directly over high point of stone.



NOTE: Dug hole 18 feet east-west and 10 feet north-south from center of road and fence line east. Found rock 3 feet west of centerline of road on line with east-west fence to east.

Statement of evidence relative to this corner location is on back of page.

I hereby certify that this document and the data contained herein was prepared by me or under my direct supervision.

Allan E. Schoon 3-19-91
SIGNATURE DATE

Registration No. 11858

Land Surveyor, Professional Engineer

County Surveyor, County Engineer

OFFICE OF THE COUNTY RECORDER

County of Nobles

I hereby certify that this document was filed in the Co. Recorders office at 9:15 A.M. on the 12th day of September A.D., 1991

County Recorder Jay Howard

By _____, Deputy

DOCUMENT NO. 245446

Statement of Evidence: East Quarter Corner of Section 25 T104N R40W 5th P.M.

- July 8, 1867 The original Public Land Survey line between Range 39W and Range 40W in Township 104N was run in 1867 by Deputy Surveyor Thomas B. Walker, and his notes read, "¼ Sec. Cor. post in mound & etc.".
- Oct. 14, 1891 M. S. Smith, Nobles County Surveyor, made a survey in the south half of Section 30. Notations on a drawing read, "Set ½ stone" at East Quarter Section 25, it also shows he set a 1/16 corner and the Northeast corner for Section 36. Distances are 2651.85 feet to section corners to the north and to the south.
- July 26, 1897 M. S. Smith, Nobles County Surveyor, made a survey for a road in Section 30-104-39. Notations on a drawing of the survey read, "stone". Distances are 2651.8 feet to section corners to the north and to the south.
- Nov. 5, 1980 A Minnesota Department of Transportation field survey crew using a tractor mounted backhoe found a 9 inch by 11 inch by 9 inch stone 50 inches below the gravel road surface. They placed a Minnesota Highway Department cast iron monument 0.3 foot below the gravel road surface to perpetuate the corner.

The inplace location of the stone is compatible with the occupation lines within the section. An analysis of the evidence and the field measurements indicate that the found stone is in a reasonable location for the corner.

For additional information, including field measurements and photographs, contact the Minnesota Department of Transportation in Windom, Minnesota.