

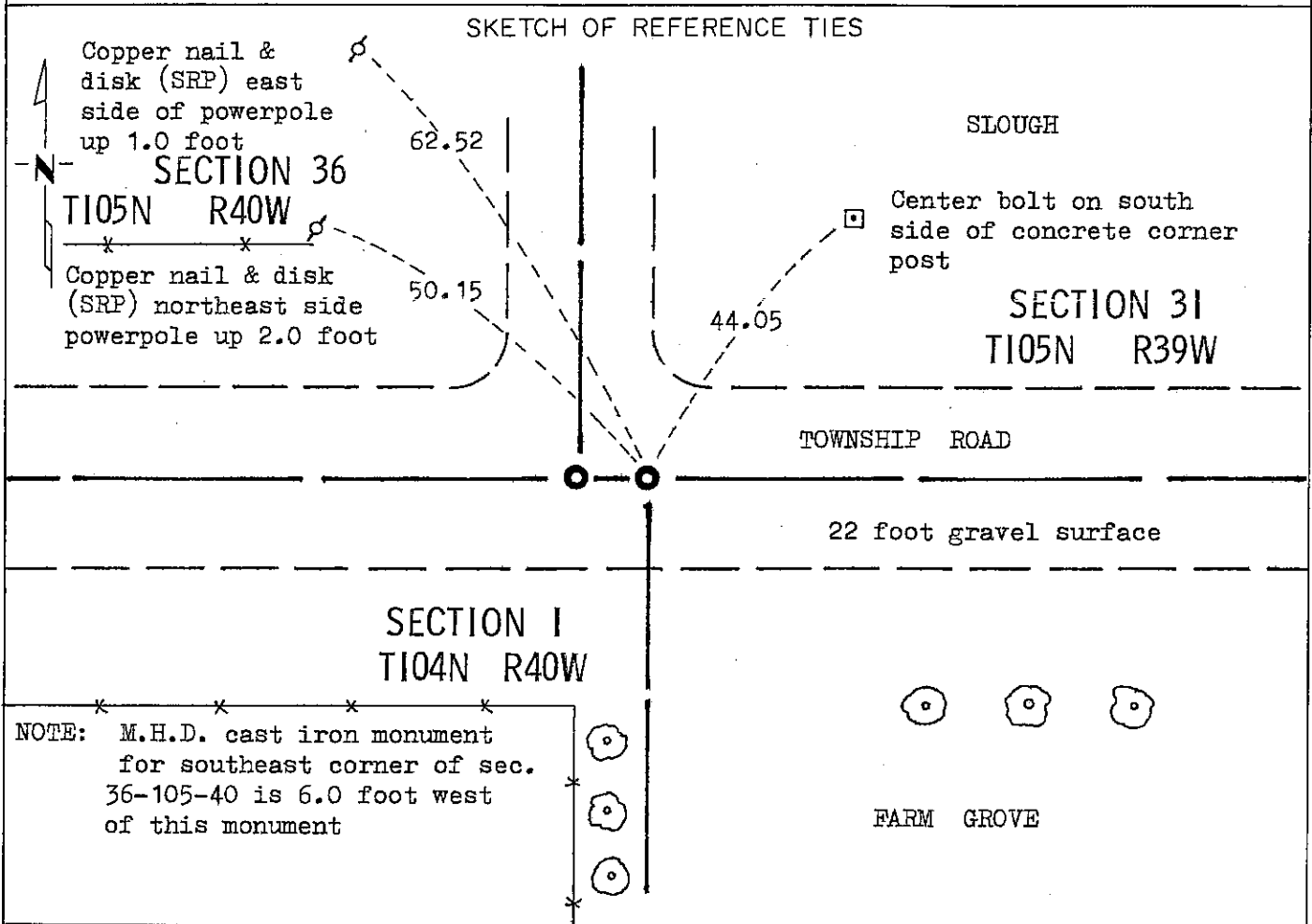
CERTIFICATE OF LOCATION OF GOVERNMENT CORNER

NORTH QUARTER Corner of Section I, Township 104N, Range 40W, 5 P.M.

STATE OF MINNESOTA, County of NOBLES

At the corner location shown on the sketch:

- On Nov. 2, 1981 found a 8 inch by 12 inch by 12 inch stone down 2.0 foot
DATE
- left monument as found, lowered monument, removed monument (explain)
- On Nov. 2, 1981 placed a M.H.D. cast iron monument directly over stone
DATE



Statement of evidence relative to this corner location is on back of page.

I hereby certify that this document and the data contained herein was prepared by me or under my direct supervision.

Allan E. Schoon 3-19-91
SIGNATURE DATE

Registration No. 11858

- Land Surveyor, Professional Engineer
- County Surveyor, County Engineer

OFFICE OF THE COUNTY RECORDER

County of Nobles

I hereby certify that this document was filed in the Co. Recorders office at 8:55 A. M. on the 12th day of September A.D., 19 91

County Recorder Deputy Howard

By _____, Deputy

DOCUMENT NO. 245442

Statement of Evidence: North Quarter Corner of Section 1 T104N R40W 5th P.M.

- Sept., 1858 Deputy Surveyor W. J. Neely surveyed the 1st Standard Parallel between Township 104N and Township 105N in 1858. The 1st Standard Parallel is the south Murray County Line.
- Sept., 1868 The original Public Land Survey was run in 1868 by Deputy Surveyors George G. Howe and Richard H. L. Jewett who surveyed the township interior sections and set closing corner posts on the 1st Standard Parallel for the sections to the south.
- May 12, 1892 Milton S. Smith, Nobles County Surveyor, survey in Section 1, measurement 5394 feet (Public Land Survey is 5390.2 feet) along the north side of Section 1. "Set stone midway between section corners on line according to law where the government have set no $\frac{1}{4}$ posts on such standard correcting lines. Said $\frac{1}{4}$ post is 6 foot east on line of said south corner Bondin and Belfast Townships."
- Nov. 2, 1981 A Minnesota Department of Transportation field survey crew using a tractor mounted backhoe found a 0.7 foot by 1.0 foot by 1.0 foot stone down 2.0 feet. They excavated a trench 3 feet (north-south) by 6 feet (east-west) by 3 feet deep in a search for any corners. They placed a Minnesota Highway Department cast iron monument directly over the found stone to perpetuate the corner.

The in place location of the stone is compatible with the occupation lines within the section. An analysis of the evidence and field measurements indicate that the stone set by Smith in 1892 is the corner.

For additional information, including field measurements and photographs, contact the Minnesota Department of Transportation in Windom, Minnesota.