

# CERTIFICATE OF LOCATION OF GOVERNMENT CORNER

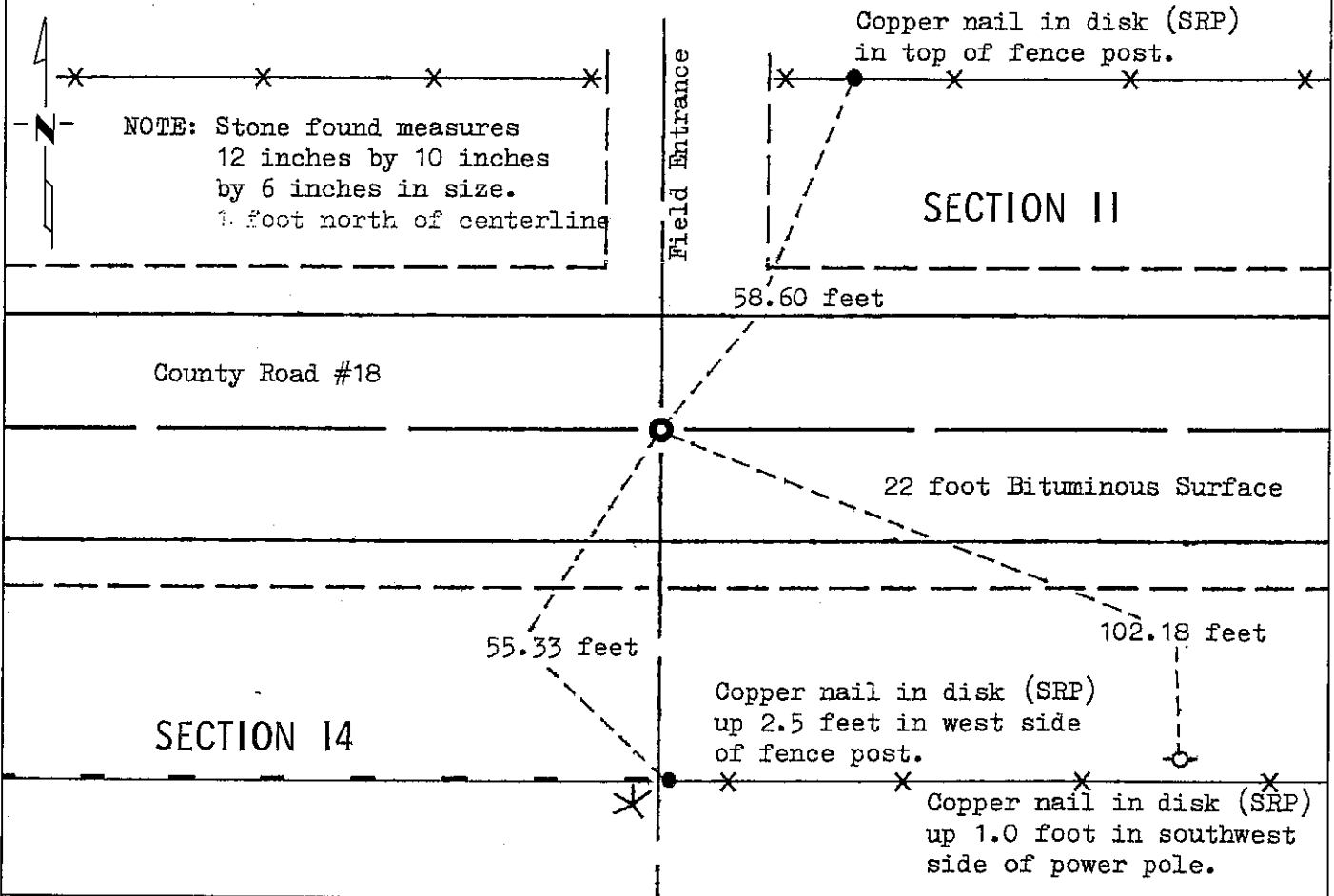
NORTH QUARTER Corner of Section 14, Township 104, Range 40, 5 P.M.

STATE OF MINNESOTA, County of NOBLES

At the corner location shown on the sketch:

- On Oct. 31, 1980 found a reinforcement bar down 0.9 foot over a 1 inch by 2 inch  
DATE  
stake down 2.4 feet over a stone down 3.8 feet below surface.
- left monument as found,  lowered monument,  removed monument (explain)
- On Oct. 31, 1980 placed a M.H.D. Cast Iron Monument with chisled "X" down 0.3  
DATE  
foot below surface (removed reinforcement bar).

### SKETCH OF REFERENCE TIES



Statement of evidence relative to this corner location is on back of page.

I hereby certify that this document and the data contained herein was prepared by me or under my direct supervision.

Allan E. Schorr 4-5-91  
SIGNATURE DATE

Registration No. 11858

- Land Surveyor,  Professional Engineer
- County Surveyor,  County Engineer

### OFFICE OF THE COUNTY RECORDER

County of Nobles

I hereby certify that this document was filed in the Co. Recorder's office at 9:35 A.M. on the 12th day of September A.D., 1991

County Recorder Jane Howard

By \_\_\_\_\_, Deputy

DOCUMENT NO. 245450

Statement of Evidence: North Quarter Corner of Section 14 T104N R40W 5th P.M.

- Sept. 2, 1868 The original Public Land Survey was run in 1868 by Deputy Surveyor G. G. Howe, and his notes read; "Set post in mound with pits for  $\frac{1}{4}$  sec. cor.". Distance is 2659.14 feet to section corners.
- Oct. 19, 1900 M. S. Smith, Nobles County Surveyor, made a survey in Section 10-104-40, and his notes indicate a stone is at the North Quarter Corner of Section 14-104-40, and the distance is 2652 feet to the Northeast Corner of Section 14.
- Aug. 7, 1901 M. S. Smith, Nobles County Surveyor, made a survey and his notes indicate a "stone" is at the North Quarter Corner Section 14. Distance 2652 feet to the Northeast Corner of Section 14 and on line with row of willow trees to the south.
- Oct. 31, 1980 Minnesota Department of Transportation field survey crew using a tractor mounted backhoe found a rebar 0.9 feet below the bituminous surface, directly over a 1 inch by 2 inch wooden stake which was down 2.4 feet and directly over the high point of a 12 inch by 10 inch by 6 inch stone which was 3.8 feet below the surface. All monuments were over the high point of stone. They removed the rebar and placed a Minnesota Highway Department cast iron monument with "+" 0.3 foot below the bituminous surface.

The in-place location of the found stone is compatible with the occupation lines within the section. An analysis of the Statement of Evidence and the field measurements indicate that the stone is in a reasonable location.

For additional information, including field measurements and photographs, contact the Minnesota Department of Transportation in Windom, Minnesota.