

CERTIFICATE OF LOCATION OF GOVERNMENT CORNER

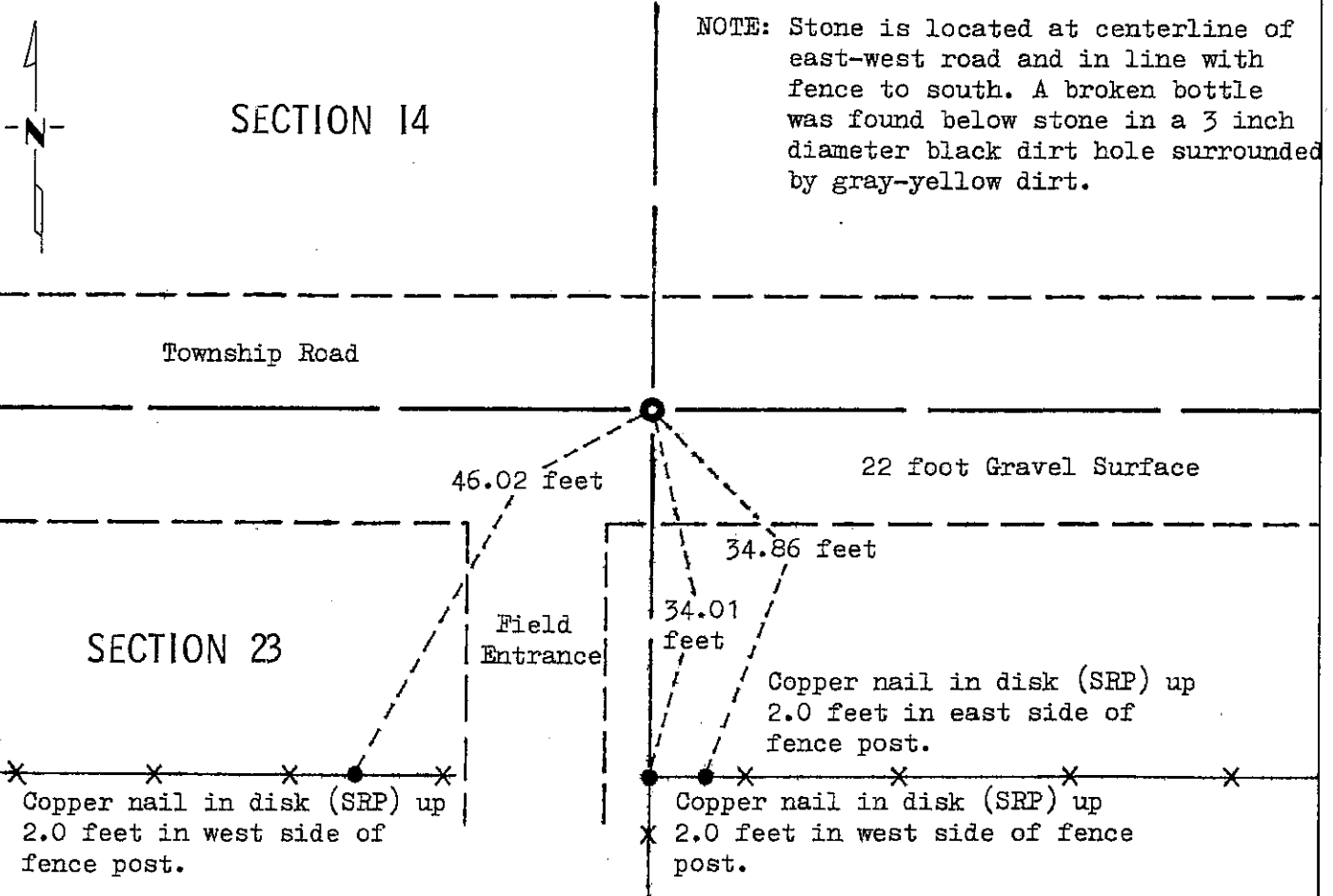
NORTH QUARTER Corner of Section 23, Township 104, Range 40, 5 P.M.

STATE OF MINNESOTA, County of NOBLES

At the corner location shown on the sketch:

- On Oct. 31, 1980 found a 18 inch by 8 inch by 10 inch stone down 2.8 feet below surface.
DATE
- left monument as found, lowered monument, removed monument (explain)
- On Oct. 31, 1980 placed a M.H.D. Cast Iron Monument with chisled "X" down 0.3 foot below surface.
DATE

SKETCH OF REFERENCE TIES



Statement of evidence relative to this corner location is on back of page.

I hereby certify that this document and the data contained herein was prepared by me or under my direct supervision.

Allen E. Schorn 4-5-91
SIGNATURE DATE

Registration No. 11858

- Land Surveyor, Professional Engineer
- County Surveyor, County Engineer

OFFICE OF THE COUNTY RECORDER

County of Nobles

I hereby certify that this document was filed in the Co. Recorders office at 9:40 A.M. on the 12th day of September A.D., 1991

County Recorder Joyce Howard

By _____, Deputy

DOCUMENT NO. 245451

Statement of Evidence: North Quarter Corner of Section 23 T104N R40W 5th P.M.

- Sept. 2, 1868 The original Public Land Survey was run in 1868 by Deputy Surveyor G. G. Howe, and his notes read: "set post in mound with pits for $\frac{1}{4}$ sec. cor."
- Aug., 1901 M. S. Smith, Nobles County Surveyor, notes from a survey in Section 14-104-40, indicate that a stone is at the North Quarter Corner of Section 23. Distances of 2655.8 feet to the Northeast Corner of Section 22 and 2670.6 feet to Northeast Corner of Section 23.
- 1901 Nobles County Highway Department Land Corner Records read, "Stone in 1901".
- Oct. 31, 1980 Minnesota Department of Transportation field survey crew using a backhoe found an 18 inch by 8 inch by 10 inch stone, 2.8 feet below the gravel surface of a road. Below the stone they found a broken bottle and a 3 inch diameter hole where the clay subsoil had filled in with black dirt. They placed a Minnesota Highway Department cast iron monument with "+" over the center of the stone and 0.3 foot below the surface of the gravel road.

The inplace location of the found stone monument is compatible with the occupation lines within the section. An analysis of the Statement of Evidence and the field measurements indicate that the stone is in a reasonable location for the corner.

For additional information, including field measurements and photographs, contact the Minnesota Department of Transportation in Windom, Minnesota.