

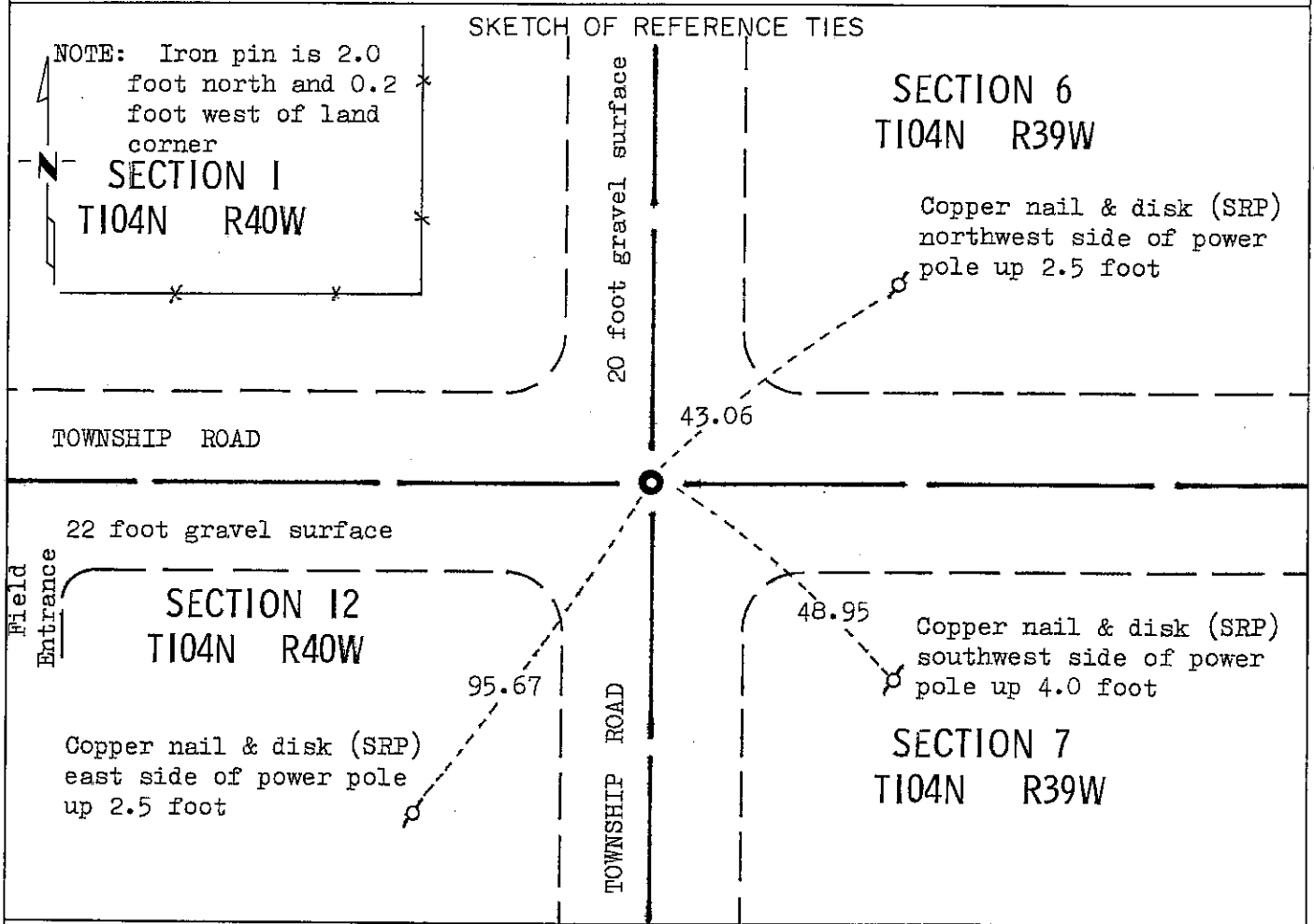
CERTIFICATE OF LOCATION OF GOVERNMENT CORNER

NORTHEAST Corner of Section 12, Township 104N, Range 40W, 5 P.M.

STATE OF MINNESOTA, County of NOBLES

At the corner location shown on the sketch:

- On Dec. 4, 1981 found a 1/2 inch by 26 inch iron pin down 2.0 foot, also a 10 inch by 10 inch by 15 inch stone down 3.3 foot with rotten wood under stone
DATE
 left monument as found, lowered monument, removed monument (explain)
- On Dec. 4, 1981 placed a M.H.D. cast iron monument down 0.3 foot over stone
DATE
"+" in cast iron monument.



Statement of evidence relative to this corner location is on back of page.

I hereby certify that this document and the data contained herein was prepared by me or under my direct supervision.

Allan E. Schorn 4-5-91
SIGNATURE DATE

Registration No. 11858

- Land Surveyor, Professional Engineer
- County Surveyor, County Engineer

OFFICE OF THE COUNTY RECORDER

County of Nobles

I hereby certify that this document was filed in the Co. Recorders office at 9:25 A. .M. on the 12th day of September A.D., 1991

County Recorder James Howard

By _____, Deputy

DOCUMENT NO. 245448

Statement of Evidence: Northeast Corner of Section 12 T104N R40W 5th P.M.

- July 8, 1867 The original Public Land Survey of the Range Line between Ranges 39W and 40W was run by Deputy Surveyor Thomas B. Walker and his notes read: "Cor Secs 6, 7, 1 & 12 for which post in mound".
- May 12, 1892 Milton S. Smith, Nobles County Surveyor, during a survey of Section 1 at the request of George Fillman et al. indicates that at the "S.E. corner he found original stake mound & pits in good preservation". (He set a stone at Sec cor 5268 feet west. There is also a stone at $\frac{1}{4}$ cor 2634 feet west.)
- April 19, 1897 M. S. Smith, Nobles County Surveyor, during a survey in Section 7 T104 R39, and at the Northwest Corner of Section he found the original government stake and "set stone" (measurement is 2663.6 feet to an orig stake at $\frac{1}{4}$ corner south, there is a stone at qr. cor 2756.2 feet east).
- June 21, 1900 M. S. Smith, Nobles County Surveyor, during a survey in Section 12 and the Plat of the survey indicates there is a "stone" at Northeast Corner.
- Dec. 4, 1981 Minnesota Department of Transportation field survey crew using a backhoe found a $\frac{1}{2}$ inch by 26 inch iron pin down 2.0 feet along side a rotten wood stake. They also found a 10 inch by 10 inch by 15 inch stone with a 2 inch nick in west edge of the stone over another rotten wood stake.
- The inplace location of the stone is compatible with the occupation lines within the section. An analysis of the Statement of Evidence and the field measurements indicate that the stone is a perpetuation of the original Public Land Survey Corner.
- For additional information, including field measurements and photographs, contact the Minnesota Department of Transportation in Windom, Minnesota.