

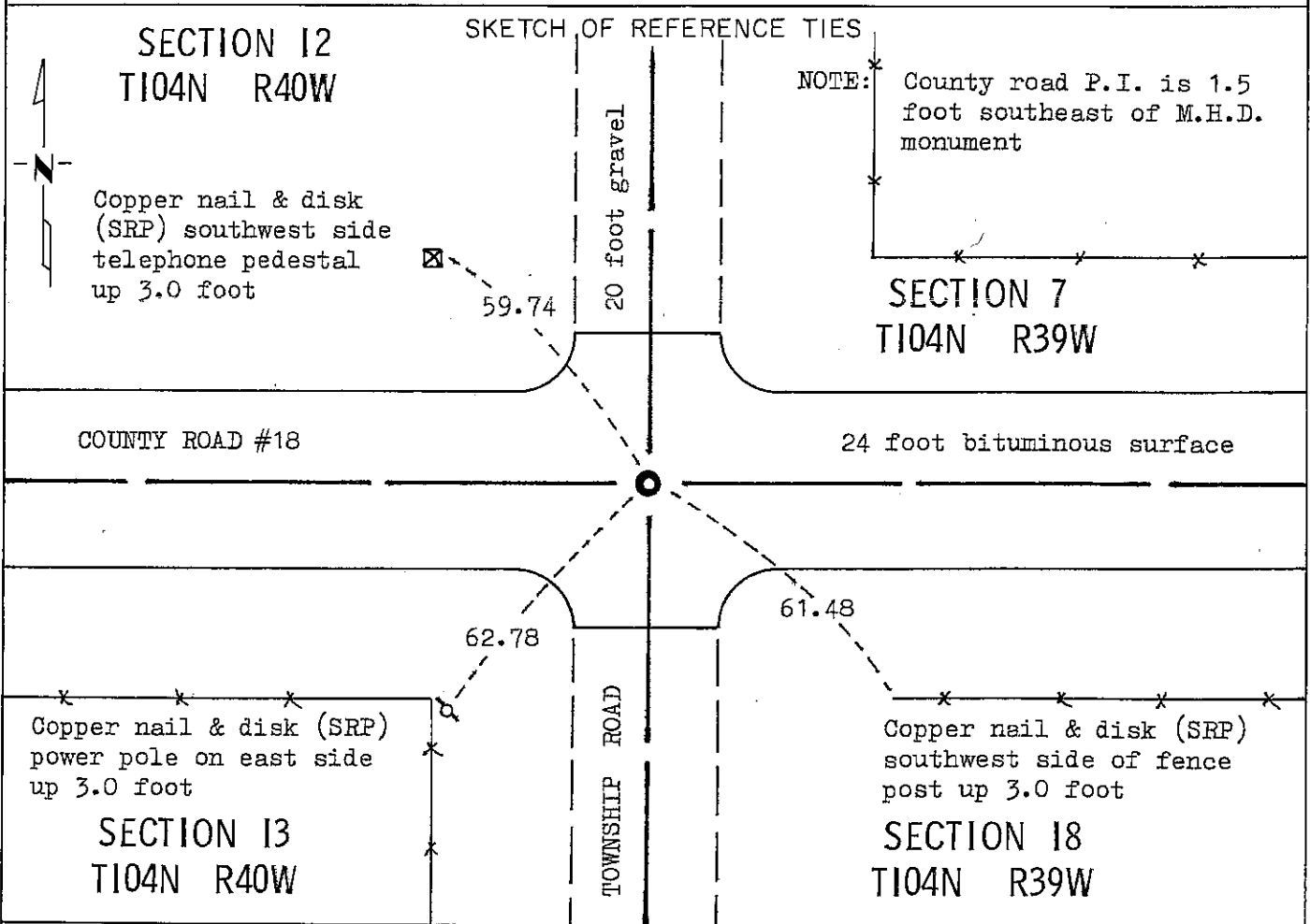
# CERTIFICATE OF LOCATION OF GOVERNMENT CORNER

NORTHEAST Corner of Section 13, Township 104N, Range 40W, 5 P.M.

STATE OF MINNESOTA, County of NOBLES

At the corner location shown on the sketch:

- On Nov. 10, 1981 found a 1 inch by 2 inch by 10 inch wood stake down 2.2 foot  
DATE  
over a 15 inch by 12 inch by 12 inch stone down 3.0 foot  
 left monument as found,  lowered monument,  removed monument (explain)
- On Nov. 10, 1981 placed a M.H.D. cast iron monument directly over stone  
DATE  
"+" in cast iron monument.



Statement of evidence relative to this corner location is on back of page.

I hereby certify that this document and the data contained herein was prepared by me or under my direct supervision.

Allan E. Schorn 4-5-91  
SIGNATURE DATE

Registration No. 11858

- Land Surveyor,  Professional Engineer
- County Surveyor,  County Engineer

OFFICE OF THE COUNTY RECORDER

County of Nobles

I hereby certify that this document was filed in the Co. Recorders office at 9:30 A. .M. on the 13th day of September A.D., 1991

County Recorder Joyce Howard

By \_\_\_\_\_, Deputy

DOCUMENT NO. 245449

Statement of Evidence: Northeast Corner of Section 13 T104N R40W 5th P.M.

- July 8, 1867 The original Public Land Survey between Ranges 39W and 40W was run in 1867 by Deputy Surveyor Thomas B. Walker, and his notes read: "Cor. Secs. 12, 13, 7 & 18 for which post in mound".
- Apr. 19, 1897 M. S. Smith, Nobles County Surveyor, during a survey in Section 7-104-39 used the Southwest Corner of Section 7 but did not identify what type of monument was in place.
- June 17, 1897 M. S. Smith, Nobles County Surveyor, during a survey in Section 18 Graham Lakes township for Adolf Ramert indicates that there is a stone at the Northwest Corner of Section 18.
- June 21, 1900 M. S. Smith, Nobles County Surveyor, on a plat of a survey in Sections 12 and 13 indicates that there is a stone monument at the Northeast Corner of Section 13. "This cor. is 2648' East of  $\frac{1}{4}$  cor. and is 5296 from N.W. corner."
- Oct. 17, 1917 J. H. Maxwell, notes for a survey in Section 13 "old stone at N.E. corner of section". This survey shows stones at all Section 13 corners.
- 1960 Nobles County Highway Department Land Corner records: "stone 1955 placed wood stake" "stake in 1961".
- Nov. 10, 1981 Minnesota Department of Transportation field survey crew using a backhoe found a 1 inch by 2 inch by 10 inch wood stake down 2.2 feet and a 15 inch by 12 inch by 12 inch stone down 3.0 feet. They placed a Minnesota Highway Department cast iron monument directly over the stone.

The location of the in place stone is compatible with the occupation lines within the section. An analysis of the Statement of Evidence and the field measurements indicate that the stone is in a reasonable location for the corner.

For additional information, including field measurements and photographs, contact the Minnesota Department of Transportation in Windom, Minnesota.