

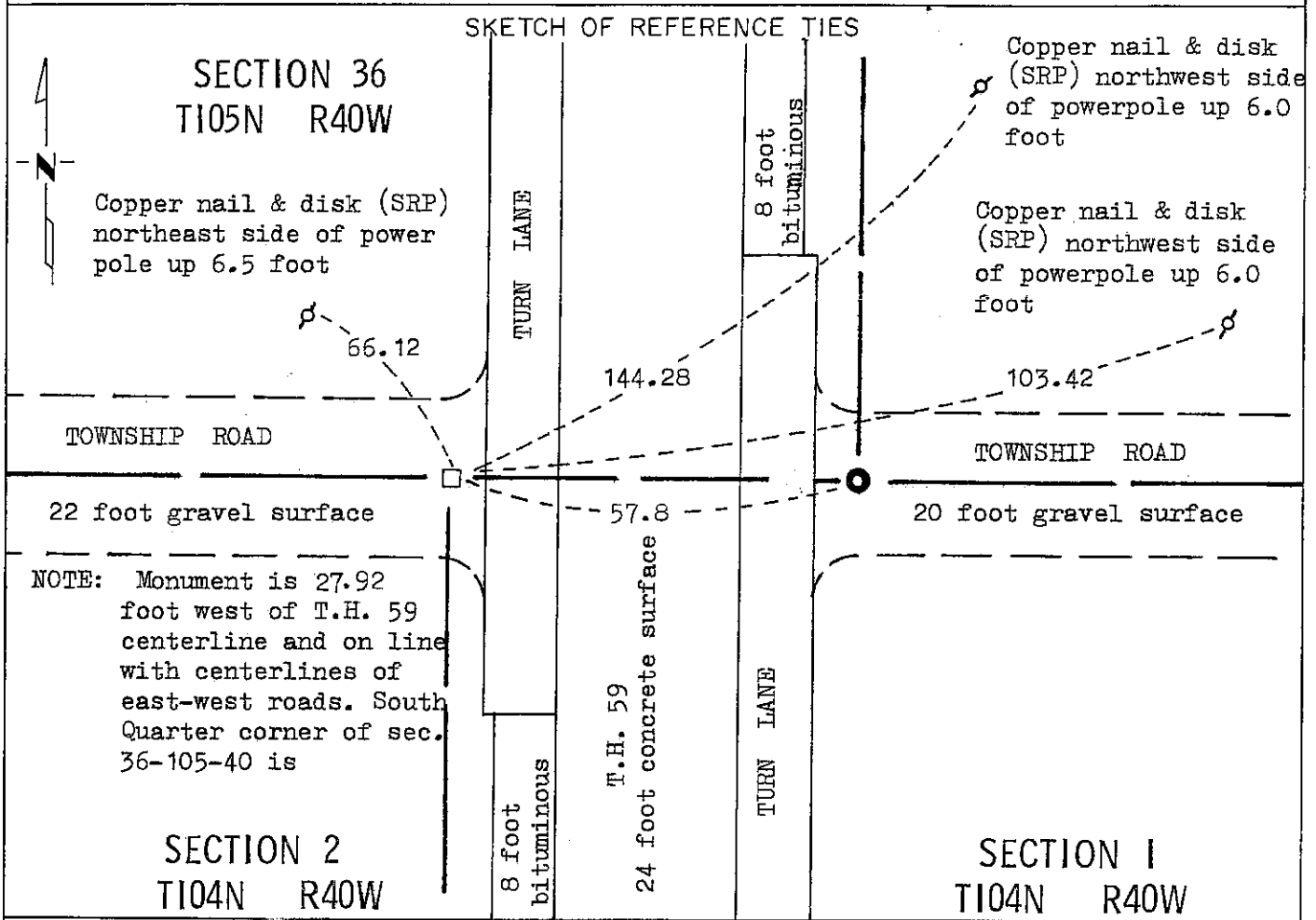
CERTIFICATE OF LOCATION OF GOVERNMENT CORNER

NORTHEAST Corner of Section 2, Township 104N, Range 40W, 5 P.M.

STATE OF MINNESOTA, County of NOBLES

At the corner location shown on the sketch:

- On May 22, 1980 found a 6 inch diameter by 24 inch concrete monument down 2.0
DATE
foot over "+" on a 12 inch by 12 inch by 14 inch stone down 5.0 foot
 left monument as found, lowered monument, removed monument (explain)
- On _____ placed a _____
DATE



Statement of evidence relative to this corner location is on back of page.

I hereby certify that this document and the data contained herein was prepared by me or under my direct supervision.

Allan E. Schorn 3-19-91
SIGNATURE DATE

Registration No. 11858

- Land Surveyor, Professional Engineer
- County Surveyor, County Engineer

OFFICE OF THE COUNTY RECORDER
County of Nobles

I hereby certify that this document was filed in the Co. Recorders office at 9:00 A.M. on the 12th day of September A.D., 19 91

County Recorder Opus Howard

By _____, Deputy

DOCUMENT NO. 245443

Statement of Evidence: Northeast Corner of Section 2 T104N R40W 5th P.M.

- Sept. 2, 1868 The original Public Land Survey was run in 1868 by Deputy Surveyors Richard H. L. Jewett and George G. Howe, and their notes indicate measuring north on a true line between Sections 1 and 2 for a distance of 75.93 chains to "Intersect 1st Standard Parallel 87 links west of $\frac{1}{4}$ Sec. Cor. South side Sec. 36 T105 R40."
- May 11, 1892 M. S. Smith, Nobles County Surveyor, could not find the original corner, and therefore set a stone at the corner. Measurements were 5394 feet to the section corner to the east; 2697 to a quarter corner east, 2500 feet to quarter corner south, 5140 feet to section corner south. (Note: Distances south appear to be 100 feet too long).
- April 21, 1897 M. S. Smith, Nobles County Surveyor, did a survey of the north line of Section 2 and the drawing of the survey indicates a "stone" in place.
- March 7, 1928 Minnesota Highway Department field notes read, "Sect. Cor. Stone Mon. Inp. 27.0' Lt. of centerline Sta. 841+98.0."
- May 20, 1929 Minnesota Highway Department field notes indicate a field stone was found and a concrete monument placed 26.7 feet west of Trunk Highway 59 centerline Station 841+98.3.
- 1937 Nobles County Highway Department land corner records read "Stone in 1937".
- 1955 A Minnesota Highway Department right of way map reads, "Stone Mon. Inp. Sec. Cor. 27.0' west of centerline".
- 1955 L. W. Batters, Minnesota Highway Department crew chief, field notes indicate a concrete monument 26.7 feet west of Sta. 841+98.3.
- 1955 Minnesota Highway Department Grading and Paving plans read, "Conc. Mon. 26.7' Lt. of centerline." Plans also read, "Sec. Cor. 27.0' W. of centerline."
- May 22, 1980 The concrete paving was removed during the reconstruction of Trunk Highway 59 and a Minnesota Department of Transportation field survey crew using a tractor mounted backhoe found a 6 inch in diameter by 24 inch concrete monument 2.0 feet below the surface of the gravel base, and a 12 inch by 12 inch by 14 inch stone with "+" 5.0 feet below the surface of the gravel base and below the other concrete monument.

The in place location of the concrete monuments is compatible with the occupation lines within the section. An analysis of the evidence and field measurements indicate that the concrete monuments were in a reasonable location for the corner.

For additional information, including field measurements and photographs, contact the Minnesota Department of Transportation in Windom, Minnesota.