

CERTIFICATE OF LOCATION OF GOVERNMENT CORNER

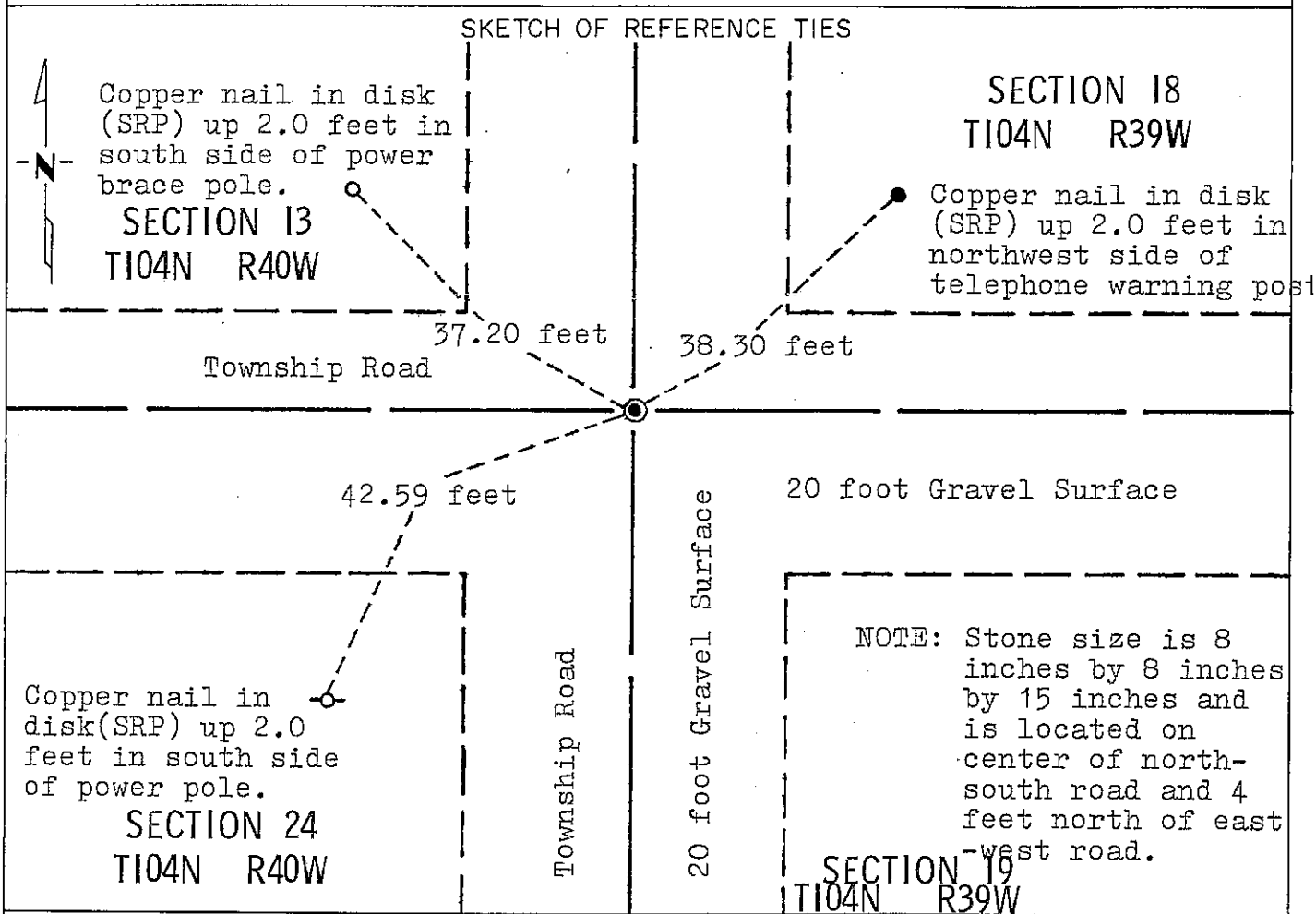
NORTHEAST Corner of Section 24, Township 104, Range 40, 5 P.M.

STATE OF MINNESOTA, County of NOBLES

At the corner location shown on the sketch:

On Nov. 3, 1980 found a 3/4 inch by 24 inch long reinforcing bar down
DATE
0.3 foot below surface over stone down 30 inches below surface.
 left monument as found, lowered monument, removed monument (explain)

On _____ placed a _____
DATE



Statement of evidence relative to this corner location is on back of page.

I hereby certify that this document and the data contained herein was prepared by me or under my direct supervision.

Allen E. Schorn 4-5-91
SIGNATURE DATE

Registration No. 11858

Land Surveyor, Professional Engineer

County Surveyor, County Engineer

OFFICE OF THE COUNTY RECORDER

County of Nobles

I hereby certify that this document was filed in the Co. Recorders office at 3:30 P. .M. on the 15th day of October A.D., 1991

County Recorder Joyce Howard

By _____, Deputy

DOCUMENT NO. 245752

Statement of Evidence: Northeast Corner of Section 24 T104N R40W 5th P.M.

- July 1867 The original Public Land Survey was run in 1867 by Deputy Surveyor Thomas B. Walker, and his notes read, "Cor. Secs. 13, 24, 18 & 19 for which post in mound & etc.".
- Oct. 19, 1891 Milton S. Smith, Nobles County Surveyor, made a survey in Section 19-103-39 where he found and used "stone in mound" at the Northwest Corner of Section 19.
- June 22, 1900 M. S. Smith and J. W. Wolstencroft, notes for a survey in Section 19-104-39 indicate a "stone" is at the Northwest corner and a measurement of 2821 feet to the North Quarter of Section 19.
- June 23, 1900 J. W. Wolstencroft's survey notes, distances of 2671 to N. $\frac{1}{4}$ 24, and 2663 to East $\frac{1}{4}$ 24.
- Oct. 17, 1917 William A. Saxon, Nobles County Surveyor, notes indicate that a stone is at the Northeast corner of Section 24. Distances 2671 to North $\frac{1}{4}$ 24 and 2656 to E. $\frac{1}{4}$ 13.
- 1980 Nobles County Highway Department land corner notes read "stone in 1900" and "stone in 1917".
- Nov. 3, 1980 Minnesota Department of Transportation field survey crew using a tractor mounted backhoe found a 3/4 inch by 24 inch re-bar .0.3 feet below the gravel road surface directly over an 8 inch by 8 inch by 15 inch stone which was 30 inches below the gravel road surface.

The inplace location of the stone is compatible with the occupation lines within the section. An analysis of the Statement of Evidence and the field measurements indicate that the stone is in a reasonable location.

For additional information, including field measurements and photographs, contact the Minnesota Department of Transportation in Windom, Minnesota.

Tract COMPASS
 Photo
 Fee