

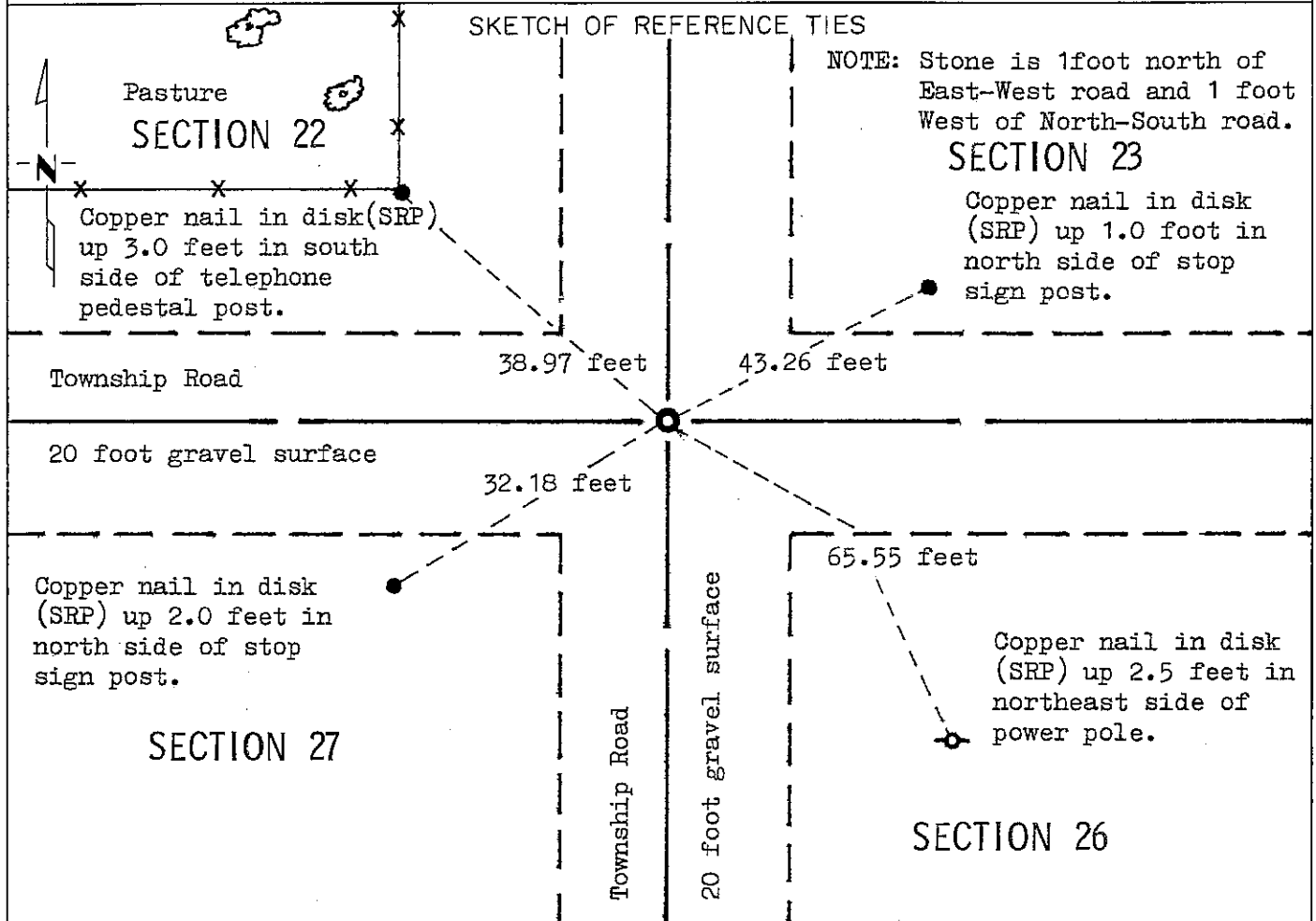
CERTIFICATE OF LOCATION OF GOVERNMENT CORNER

NORTHEAST Corner of Section 27, Township 104, Range 40, 5 P.M.

STATE OF MINNESOTA, County of NOBLES

At the corner location shown on the sketch:

- On Nov. 4, 1980 found a 19 inch by 9 inch by 6 inch stone down 21 inches, over
DATE 22 inch by 8 inch by 14 inch stone down 40 inches below gravel surface.
 left monument as found, lowered monument, removed monument (explain)
- On Nov. 4, 1980 placed a M.H.D. Cast Iron Monument 0.3 foot below gravel
DATE surface directly over high point of top stone. "+" in cast iron monument.



Statement of evidence relative to this corner location is on back of page.

I hereby certify that this document and the data contained herein was prepared by me or under my direct supervision.

Allan E. Schoon 4-5-91
SIGNATURE DATE

Registration No. 11858

- Land Surveyor, Professional Engineer
- County Surveyor, County Engineer

OFFICE OF THE COUNTY RECORDER

County of Nobles

I hereby certify that this document was filed in the Co. Recorders office at 3:35 P. .M. on the 15th day of October A.D., 1991

County Recorder Jasper Herward

By _____, Deputy

DOCUMENT NO. 245753

Statement of Evidence: Northeast Corner of Section 27 T104N R40W 5th P.M.

Sept. 2, 1868

The original Public Land Survey was run in 1868 by Deputy Surveyor George G. Howe, and his notes read, "Set post in mound with pits for Cor. to Sec's. 22, 23, 26 & 27".

Date Unknown

Nobles County Recorder survey records of a survey for State Road #3 indicate a distance of 2641.5 feet to a quarter corner north and 2657.5 feet to a quarter corner south. Ties are 44 feet to a corner post northeast and 57 feet to a big willow tree southeast. The records do not indicate what type of monument is in place at the corner.

Nov. 4, 1980

A Minnesota Department of Transportation field survey crew using a tractor mounted backhoe found a 19 inch by 9 inch by 6 inch stone down 21 inches below the gravel road surface, and over a 22 inch by 8 inch by 14 inch stone 40 inches below the gravel road surface. They placed a Minnesota Highway Department Cast Iron Monument 0.3 foot below the gravel road surface and directly over the point of the upper stone to perpetuate the corner.

The origin of the stones could not be determined, but the location of the found stones is compatible with the occupation lines within the section. An analysis of the evidence and the field measurements indicate that the stones are in a reasonable location for the corner.

For additional information, including field measurements and photographs, contact the Minnesota Department of Transportation in Windom, Minnesota.

Tract 104 Compared _____
 Photo 11/2
 Fee 2.00