

CERTIFICATE OF LOCATION OF GOVERNMENT CORNER

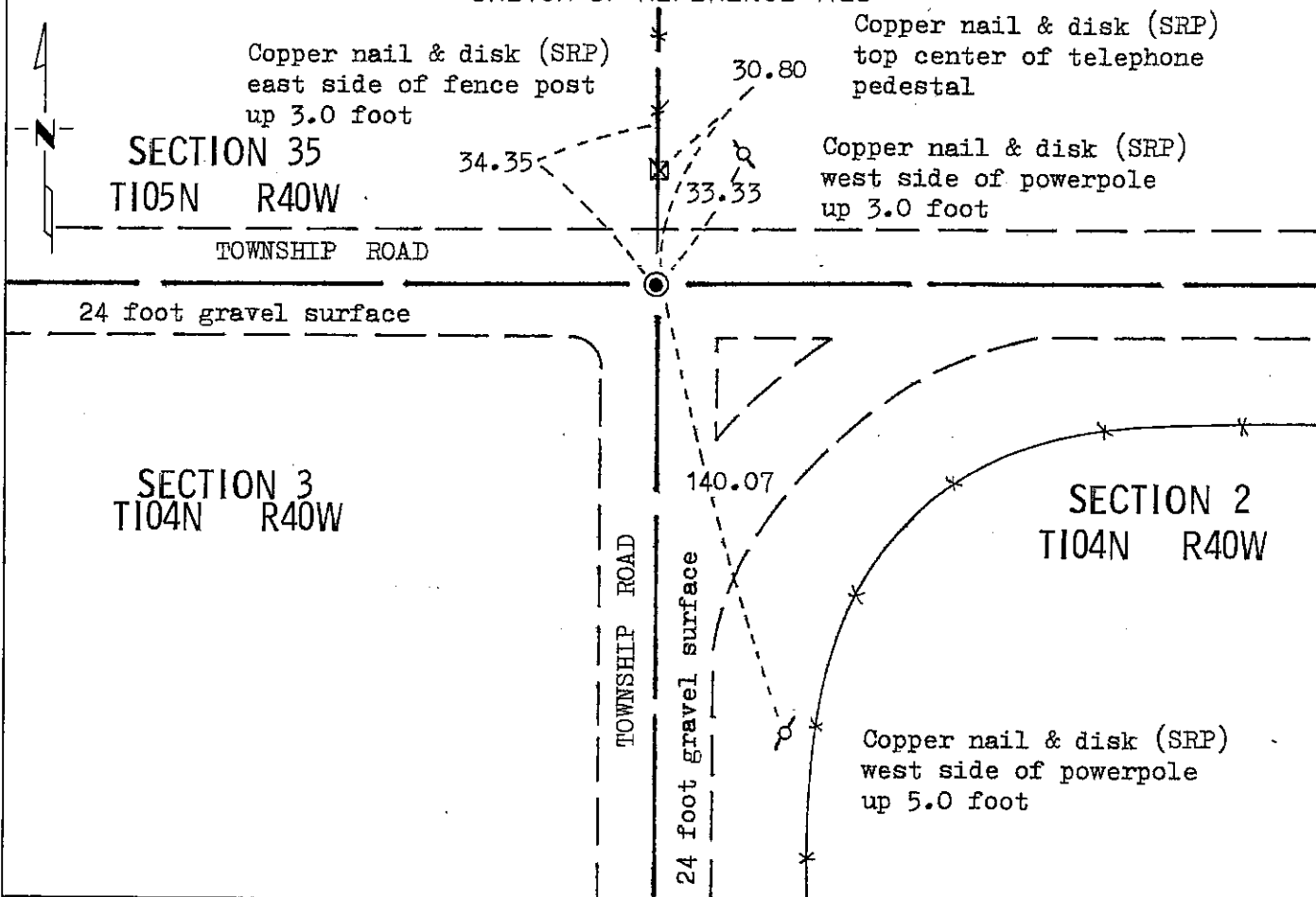
NORTHEAST Corner of Section 3, Township 104N, Range 40W, 5 P.M.

STATE OF MINNESOTA, County of NOBLES

At the corner location shown on the sketch:

- On Nov. 30, 1981 found a 5/8 inch rebar with plastic cap lying flat, also a 10 inch by 12 inch by 25 inch rock down 2.5 foot (See Statement of Evidence)
DATE
 left monument as found, lowered monument, removed monument (explain)
- On Nov. 30, 1981 ~~replaced~~ replaced stone with rebar above the stone as per Gary Martin's ties
DATE

SKETCH OF REFERENCE TIES



Statement of evidence relative to this corner location is on back of page.

I hereby certify that this document and the data contained herein was prepared by me or under my direct supervision.

Allan E. Schorn 3-19-91
SIGNATURE DATE

Registration No. 11858
 Land Surveyor, Professional Engineer
 County Surveyor, County Engineer

OFFICE OF THE COUNTY RECORDER
County of Nobles

I hereby certify that this document was filed in the Co. Recorders office at 9:05 A.M. on the 12th day of September A.D., 1991

County Recorder Joseph Howard
By _____, Deputy

DOCUMENT NO. 245444

Statement of Evidence: Northeast Corner of Section 3 T104N R40W 5th P.M.

- Sept. 1858 The original Public Land Survey of the 1st Standard Parallel between Townships 104N and 105N was run by Deputy Surveyor W. J. Neely. - The 1st Standard Parallel is the County Line between Murray and Nobles County. W. J. Neely's notes read: "Set qr sec post deposited charcoal made mound trench and pits as per instructions".
- Sept. 2, 1868 The original Public Land Survey was run in 1868 by Deputy Surveyor Richard H. L. Jewett and his notes read: "intersect 1st Standard Parallel at $\frac{1}{4}$ sec. cor. south side section 35 Town 105 R40. Set closing corner for secs 2 & 3 Town 104N R40W. Post in mound with pits".
- May 12, 1892 Milton S. Smith - Survey for Nobles County Road No. 4 from the west quarter post of Section 2 to the Northwest Corner of Section 2 T104 R40 in the Town of Seward. He found "original stake in mound & pits also $\frac{1}{4}$ post for sec 35 on south".
- Apr. 21, 1897 M. S. Smith, Nobles County Surveyor, for a survey along the north line of Section 2: "orig. stake, Set stone, S. $\frac{1}{4}$ sec post, common corner Measurement is 5277 foot between section corners. quarter post set at mid distance of 2638.5 to section corners".
- May 24, 1979 Martin Land Surveying of Worthington made a survey on Section 35 for Haberman. "Found stone and hub per county highway records. Set $\frac{1}{2}$ inch rebar above."
- Nov. 30, 1981 A Minnesota Department of Transportation field survey crew using a tractor mounted backhoe found a 10 inch by 12 inch by 25 inch stone down 2.5 feet. They also found a 5/8 inch rebar with a survey cap on top over the stone but the rebar was lying flat.

An analysis of occupation lines of long standing within the sections indicate that the in place location of the stone is a perpetuation of the original Public Land Survey corner.

For additional information, including field measurements and photographs, contact the Minnesota Department of Transportation in Windom, Minnesota.