

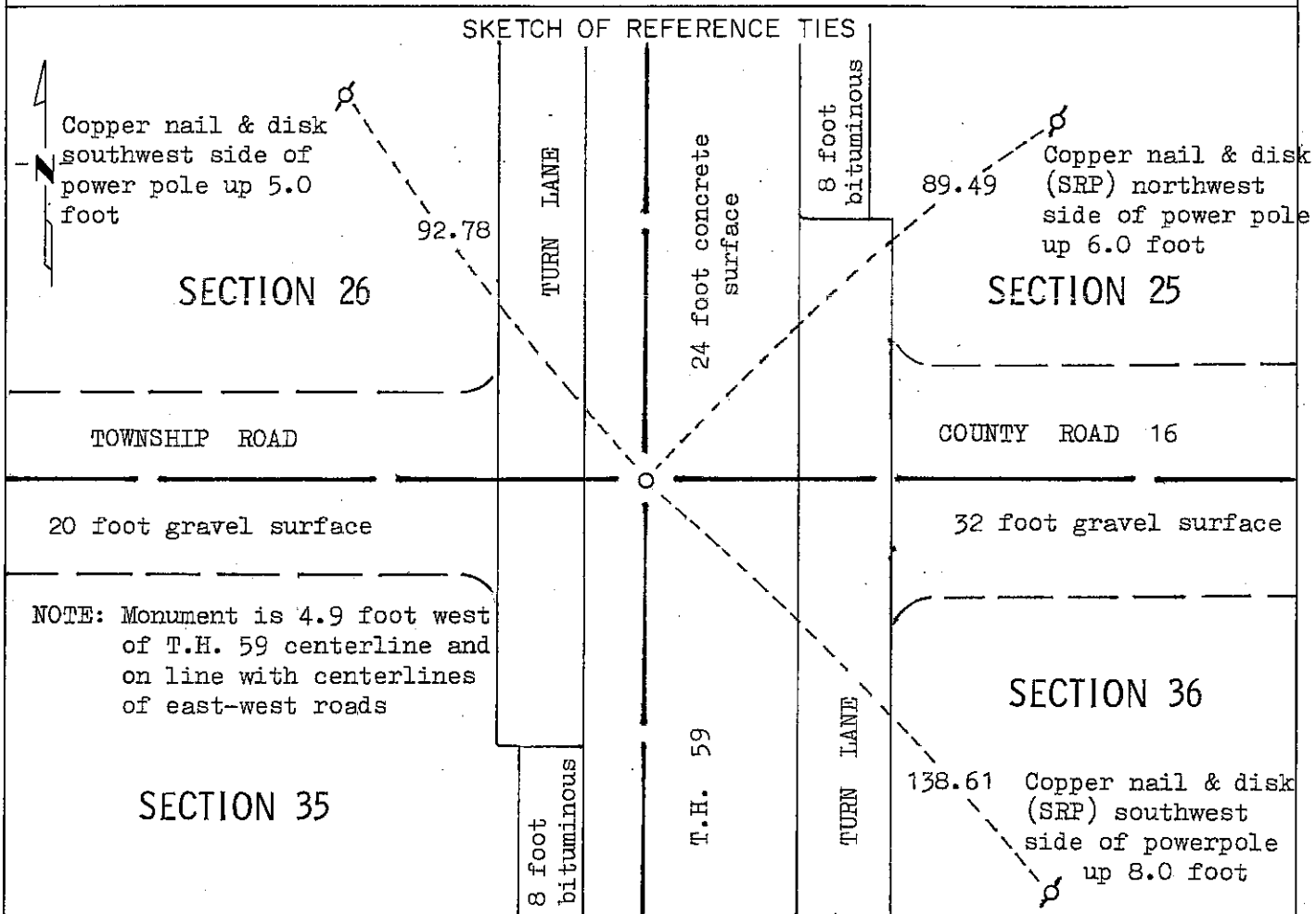
CERTIFICATE OF LOCATION OF GOVERNMENT CORNER

NORTHEAST Corner of Section 35, Township 104N, Range 40W, 5 P.M.

STATE OF MINNESOTA, County of NOBLES

At the corner location shown on the sketch:

- On Jun. 25, 1980 found a 30 inch concrete monument down 0.5 foot over a 6 inch
DATE by 20 inch concrete monument
- left monument as found, lowered monument, removed monument (explain)
- On Sept. 9, 1980 placed a Brass plug over concrete monument
DATE



Statement of evidence relative to this corner location is on back of page.

I hereby certify that this document and the data contained herein was prepared by me or under my direct supervision.

Allan E. Schoon 4-5-91
SIGNATURE DATE

Registration No. 11858

- Land Surveyor, Professional Engineer
- County Surveyor, County Engineer

OFFICE OF THE COUNTY RECORDER

County of Nobles

I hereby certify that this document was filed in the Co. Recorders office at 3:40 P. .M. on the 15th day of October A.D., 1991

County Recorder Jane Howard

By _____, Deputy

DOCUMENT NO. 245754

Statement of Evidence: Northeast Corner of Section 35 T104N R40W 5th P.M.

- Sept. 1, 1868 The original Public Land Survey was run in 1868 by Deputy Surveyors Jewett and Howe, and their notes read, "Set post in mound with pits for corner to Secs. 25, 26, 35 & 36". A plat of the original survey shows distance of 5,280 feet to section corners north, south, and west, and a distance of 5286.6 to the range line east, and 1294 feet to a creek north.
- 1891 Nobles County Highway Department land corner records read, "1891 stone inplace".
- 1926 Nobles County Highway Department land corner records read, "1926 stone inplace".
- May 20, 1929 Minnesota Highway Department field notes indicate that the section corner is a concrete monument 4.6 feet west of Trunk Highway 59 P.O.T. 579+81.3.
- 1955 Minnesota Highway Department Right-of-Way map reads, "sec. cor. 06.6 feet west of Station 579+81.4".
- 1955 Minnesota Highway Department paving plans read, "Section Corner at Sta. 579+81.3 conc. mon. 4.6' lt. of centerline, below slab".
- 1955 Minnesota Highway Department final land tie book indicates a Brass Plug over a concrete monument 4.6 feet left of Station 579+81.5. Ties northwest 124.9 feet to concrete monument, southwest 120.0 feet to concrete monument, northeast 132.10 feet to concrete monument.
- 1963 Nobles County Highway Department land corner book reads, "1963 Brass Plug" and "1964 Brass Plug".
- April 21, 1980 Minnesota Department of Transportation field survey crew located the brass plug 4.9 feet left of the centerline of Trunk Highway 59.
- June 25, 1980 The concrete paving was removed during reconstruction of Trunk Highway 59. A Minnesota Department of Transportation survey crew excavated and found a 30 inch concrete monument down 6 inches over a 6 inch by 20 inch concrete monument with a rebar down 4.0 feet. A 10 inch by 11 inch by 8 inch stone was found beside the base of the upper monument.
- Sept. 9, 1980 A Minnesota Department of Transportation field survey crew placed a brass plug in the concrete pavement over the location of the concrete monument to perpetuate the corner.

The inplace location of the concrete monument is compatible with the occupation lines within the section. An analysis of the evidence and the field measurements indicate that the concrete monument is in a reasonable location. The brass plug is a perpetuation of the corner location.

For additional information, including field measurements and photographs, contact the Minnesota Department of Transportation in Windom, Minnesota.

Tract *W.D.* Compared
 Photo *W.D.*
 Date *7/20*