

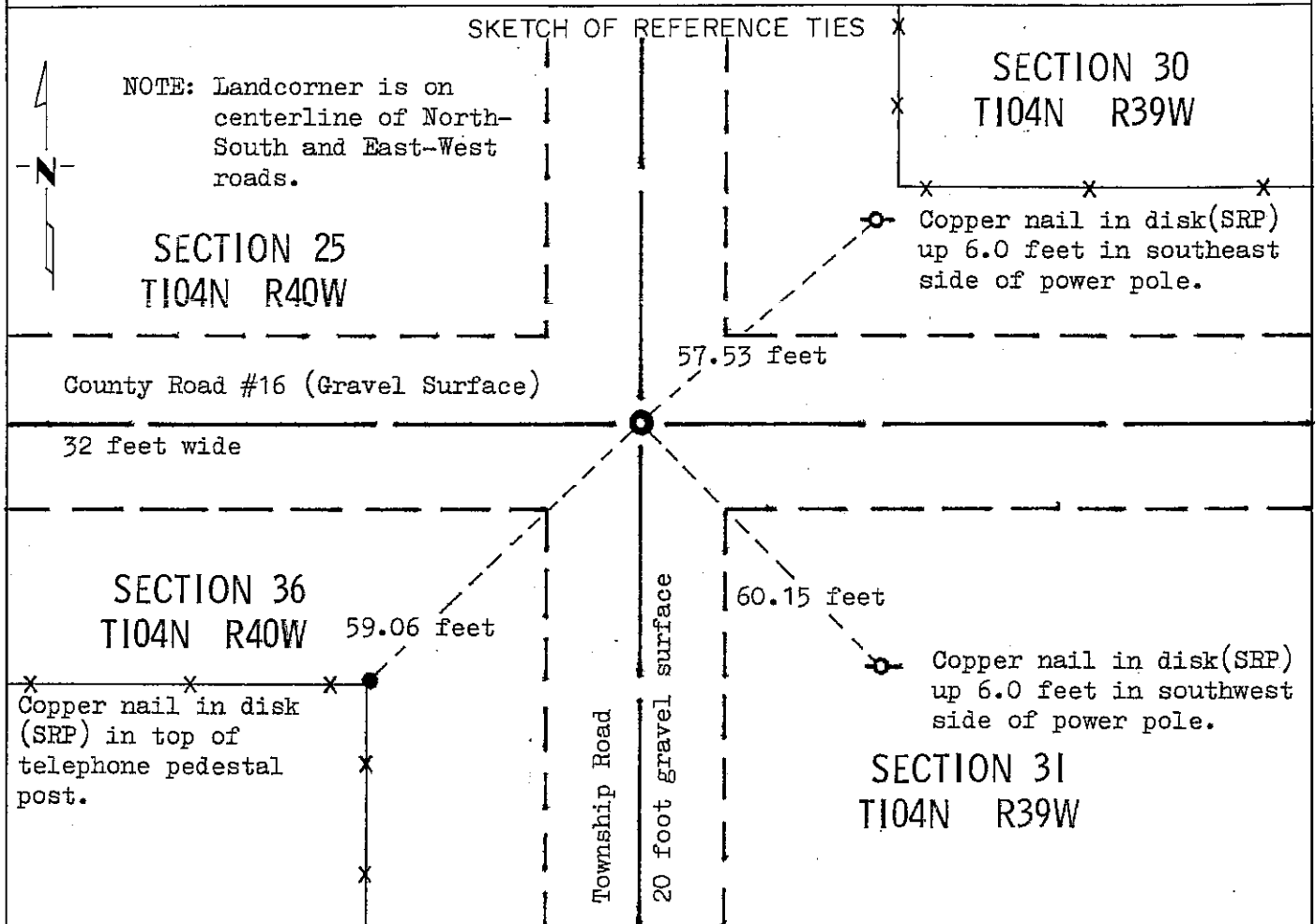
CERTIFICATE OF LOCATION OF GOVERNMENT CORNER

NORTHEAST Corner of Section 36, Township 104, Range 40, 5 P.M.

STATE OF MINNESOTA, County of NORLES

At the corner location shown on the sketch:

- On Nov. 5, 1980 found a spike down 3 inches, over 2 inch by 2 inch wood stake
DATE
down 36 inches, over stone with "x" down 59 inches. (Removed spike)
 left monument as found, lowered monument, removed monument (explain)
- On Nov. 5, 1980 placed a M.H.D. Cast Iron Monument 0.3 feet below gravel surface,
DATE
directly over "x" in stone. (Stone measures 15 inches by 10 inches by 9 inches)



Statement of evidence relative to this corner location is on back of page.

I hereby certify that this document and the data contained herein was prepared by me or under my direct supervision.

Allan E. Schorn 4-5-91
SIGNATURE DATE

Registration No. 11858

- Land Surveyor, Professional Engineer
- County Surveyor, County Engineer

OFFICE OF THE COUNTY RECORDER

County of Nobles

I hereby certify that this document was filed in the Co. Recorders office at 3:45 P. .M. on the 15th day of October A.D., 19 91

County Recorder James Howard

By _____, Deputy

DOCUMENT NO. 245755

Statement of Evidence: Northeast Corner of Section 36 T104N R40W 5th P.M.

- July 8, 1867 The original Public Land Survey was run in 1867 by Deputy Surveyor Thomas B. Walker, and his notes read, "Cor. Secs 30, 31, 25 & 36 for which post in mound & etc."
- Oct. 14, 1891 M. S. Smith, Nobles County Surveyor, made a survey in the south half of Section 30-104-39 and the north half of Section 31-104-39. Notes on a drawing of the survey read, "Set stone at N.W. cor sec 31 (N.E. 36-104-40) on line with township stone at S.W. cor of sec 31 (N.E. 1-103-40) and a $\frac{1}{4}$ stake on W. side of sec. 31 to intersect with sec line on N. side of 36 running from the N.W. cor stone of sec. 36 T104 R40 and $\frac{1}{4}$ post on N. side of said 36". Distances on drawing are 2638.68 feet to North $\frac{1}{4}$ 36-104-40; 2665.74 feet to North Quarter 31-104-39; 2651.85 to East Quarter 25-104-40; and 5303.7 feet to Northeast 25-104-40.
- July 26, 1897 M. S. Smith, Nobles County Surveyor, made a survey in Section 30-104-39. Notes on a drawing of the survey read "stone" at N.E. 36-104-40. Distances are 2651.8 feet to a "stone" at East Quarter 25-104-40, and 2706 feet to "stone" at North Quarter 31.
- May 14, 1900 M. S. Smith, Nobles County Surveyor, made a survey of Section 31-104-39, a drawing of the survey reads "stone" at Northeast 36-104-40. Distances are 2651.85 feet to East Quarter 25, 2665.74 feet to North Quarter 31, and notes in survey read "short about 2 rds" on distance to Northeast 1, measurement is 1365.5 feet to North $\frac{1}{16}$ of the N.W. Quarter of Section 31.
- 1964 Nobles County Highway Department land corner records read "iron pin in 1964".
- Nov. 5, 1980 A Minnesota Department of Transportation field survey crew using a tractor mounted backhoe found a 15 inch by 10 inch by 9 inch stone with "+" chiseled on it 5 feet below the gravel road surface, and below a 2 inch by 2 inch wood stake 3 feet below the gravel road surface, which was below a spike 3 inches below the gravel road surface. They removed the spike and placed a Minnesota Highway Department cast iron monument 0.3 foot below the gravel road surface.

The found stone is compatible with occupation lines within the section. An analysis of the Statement of Evidence and the field measurements indicate that the stone is in a reasonable location for the corner.

For additional information, including field measurements and photographs, contact the Minnesota Department of Transportation in Windom, Minnesota.

[Handwritten signature]
 Fee *[initials]*