

UNITED STATES PUBLIC LAND SURVEY CORNER CERTIFICATE FOR

Land survey monuments situated in Section 25, Township 104 North, Range 40 West, of the Fifth Principal Meridian, Nobles County, Minnesota..

Previously recorded in N/A in County Recorder's Office.

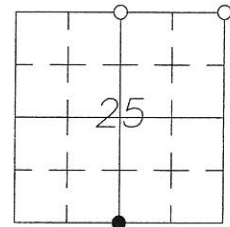
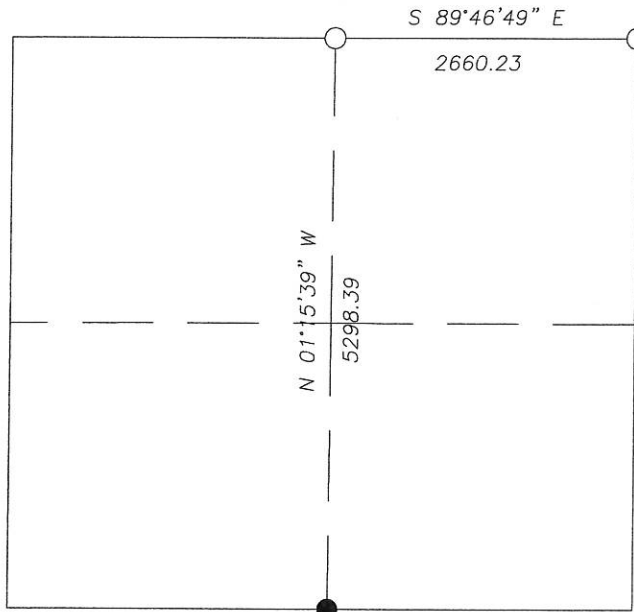
(Show reason for preparing this certificate, the evidence and detailed procedure used in establishing the corner position & monumentation found or placed.)

MONUMENT DESCRIPTION AND REMARKS: On Nov. 7, 2007 we dug with backhoe for North 1/4 Corner & NE Corner and found no evidence of corners. We then set a 1" Iron Pipe with survey cap 23008 for North 1/4 Corner of the Township road centerline in line with fence south, the practical location. We set a 1" Iron Pipe with survey cap 23008 at centerline intersection, the practical location for NE Corner also. County has no record of those corners. The NW Corner of Section is beneath T.H. 59 pavement and could not be dug up to locate corner.

NOBLES COUNTY COORDINATES

PLAN-VIEW

N = 206111.62
E = 596893.97



I hereby certify that this land surveying document was prepared and related survey work was performed by me or under my direct supervision and that I am a duly licensed Land Surveyor under the laws of the State of Minnesota.

Perry L. Zieske 11-26-07
Signature Date
Perry Zieske
License number 23008

Corners to be Indexed

Corners	Section	Township	Range
N 1/4	25	104	40
NE	25	104	40