

CERTIFICATE OF LOCATION OF GOVERNMENT CORNER

NORTH QUARTER Corner of Section 27, Township 104, Range 40, 5th P.M.

STATE OF MINNESOTA, County of NOBLES

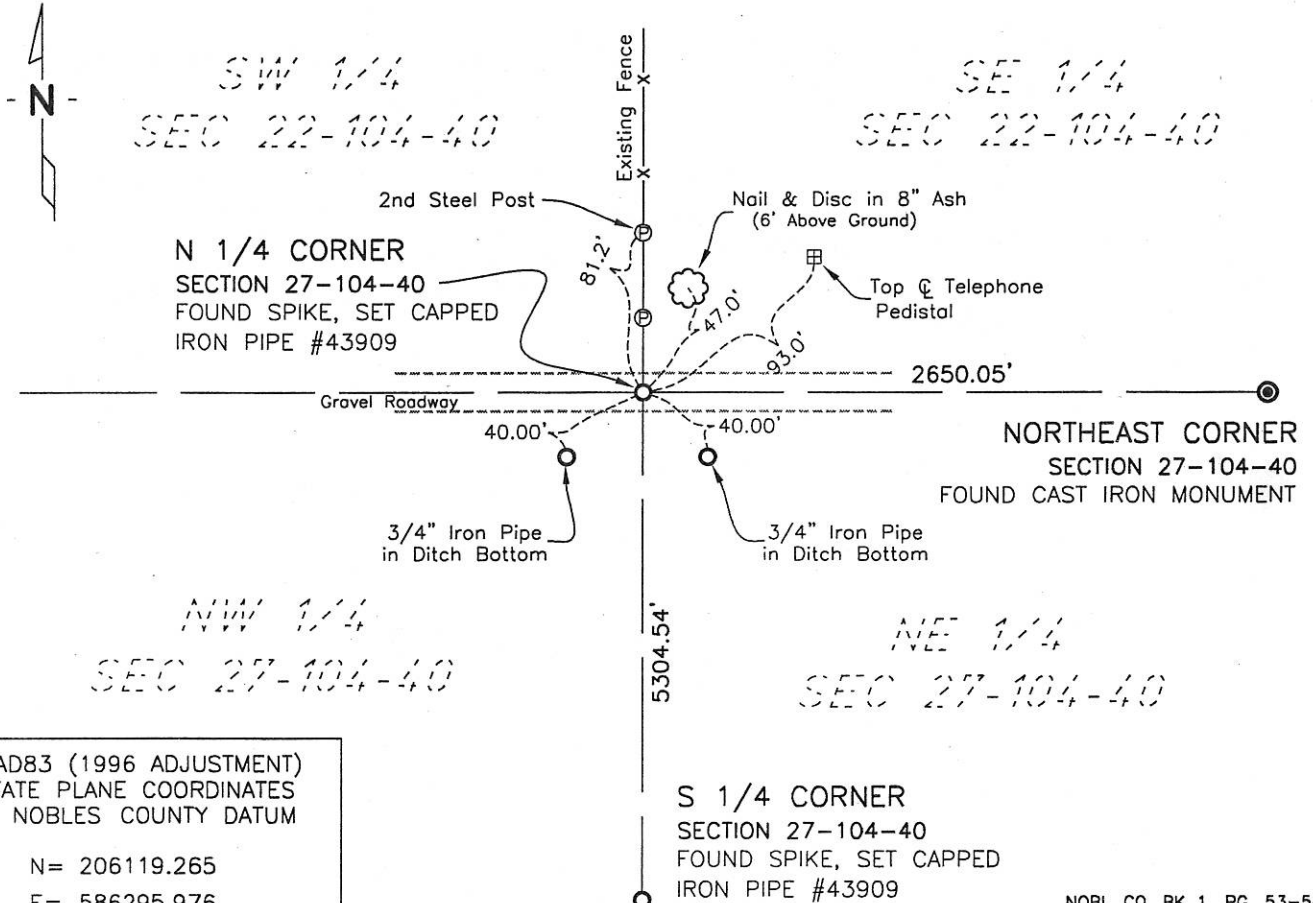
At the corner location shown on the sketch:

On 4/2006 found a SPIKE 10" DEEP
DATE

left monument as found, lowered monument, removed monument (explain)

On 4/2006 placed a 3/4" x 24" CAPPED IRON PIPE IN PLACE OF SPIKE
DATE

SKETCH OF REFERENCE TIES



NAD83 (1996 ADJUSTMENT)
STATE PLANE COORDINATES
NOBLES COUNTY DATUM

N = 206119.265
E = 586295.976

NOBL CO. BK 1, PG. 53-54
I:\NOBL\CERTS\CAD\NQC27-104-40.DWG

Statement of evidence relative to this corner location is on back of page.

I hereby certify that this document and the data contained herein was prepared by me or under my direct supervision.

Joseph A. Haefner 3-2-07
JOSEPH A. HAEFNER DATE

Registration No. 43909

Land surveyor, Professional Engineer
 County Surveyor, County Engineer

OFFICE OF THE COUNTY RECORDER

County of _____

I hereby certify that this document was filed in the Co. Recorders office at ____M. on the _____ day of _____ A.D., 20____

County Recorder _____

By _____, Deputy

DOCUMENT NO. _____