

UNITED STATES PUBLIC LAND SURVEY CORNER CERTIFICATE FOR

Land survey monuments situated in Section 32, Township 104 North, Range 40 West, of the Fifth Principal Meridian, Nobles County, Minnesota..

Previously recorded in N/A in County Recorder's Office.

(Show reason for preparing this certificate, the evidence and detailed procedure used in establishing the corner position & monumentation found or placed.)

MONUMENT DESCRIPTION AND REMARKS: On November 27, 2013 we searched for North 1/4 Corner & found no evidence of corner. County Highway records show no information for corner. There are still portions of old north-south fenceline & the old roadbed centerline is on east half mile line between NW & NE corner of section & there is a steel post at occupation line to north & south. Set a 5/8" Iron stake with survey cap 23008 on north-south fenceline & 1.9' south of steel post. This is best fit for practical location & occupation for corner.

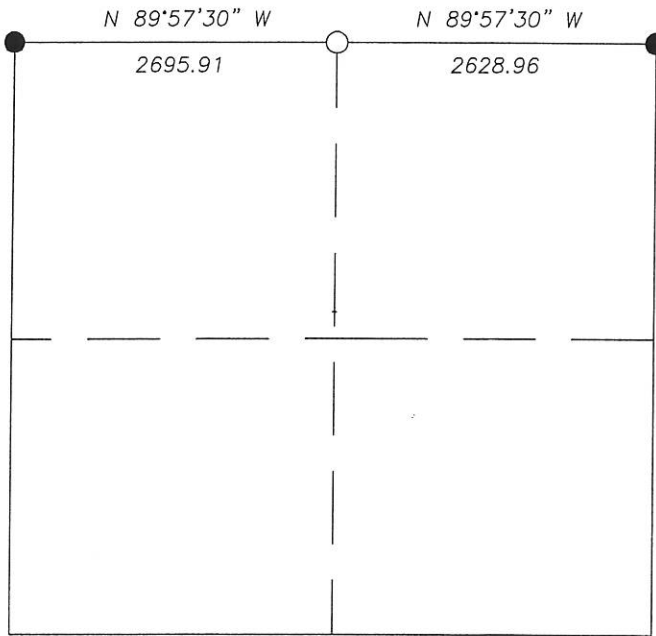
NOBLES COUNTY COORDINATES

PLAN-VIEW

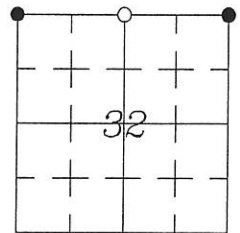
NAD-83 (2007)

N = 200834.92
E = 575726.25

N = 200836.88
E = 573030.34



N = 200833.00
E = 578355.22



TWP. 104 N., RG. 40 W.



I hereby certify that this land survey, plan, or report was prepared by me and under my direct supervision and that I am a duly licensed Land Surveyor under the laws of the state of Minnesota.



Corners	Section	Township	Range
N 1/4	32	104	40

Signature Perry L. Zieske Typed or Printed Name: Perry L. Zieske
Date 12-3-13 Reg. No.: 23008