

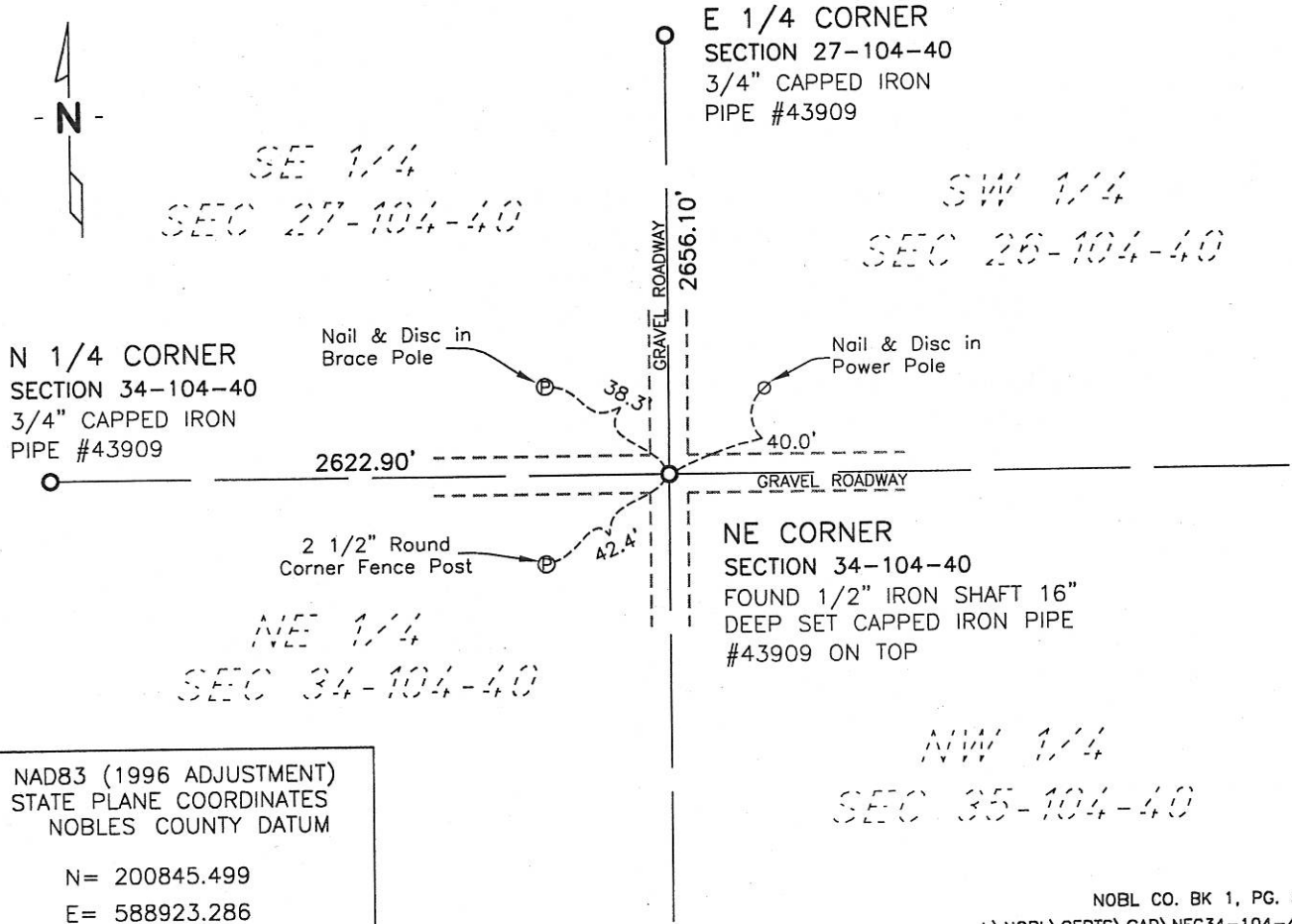
CERTIFICATE OF LOCATION OF GOVERNMENT CORNER

NORTHEAST Corner of Section 34, Township 104, Range 40, 5th P.M.
STATE OF MINNESOTA, County of NOBLES

At the corner location shown on the sketch:

- On 4/2006 found a 1/2" IRON SHAFT 16" DEEP
DATE
- left monument as found, lowered monument, removed monument (explain)
- On 4/2006 placed a 3/4" CAPPED IRON PIPE #43909 AT SURFACE
DATE

SKETCH OF REFERENCE TIES



NAD83 (1996 ADJUSTMENT)
STATE PLANE COORDINATES
NOBLES COUNTY DATUM

N= 200845.499
E= 588923.286

NOBL CO. BK 1, PG. 53-54
I:\NOBL\CERTS\CAD\NEC34-104-40.DWG

Statement of evidence relative to this corner location is on back of page.

I hereby certify that this document and the data contained herein was prepared by me or under my direct supervision.

Joseph A. Haefner
JOSEPH A. HAEFNER
DATE 3-2-07

Registration No. 43909

Land surveyor, Professional Engineer
 County Surveyor, County Engineer

OFFICE OF THE COUNTY RECORDER
County of _____

I hereby certify that this document was filed in the Co. Recorders office at ____M. on the _____ day of _____ A.D., 20____

County Recorder _____
By _____, Deputy

DOCUMENT NO. _____