

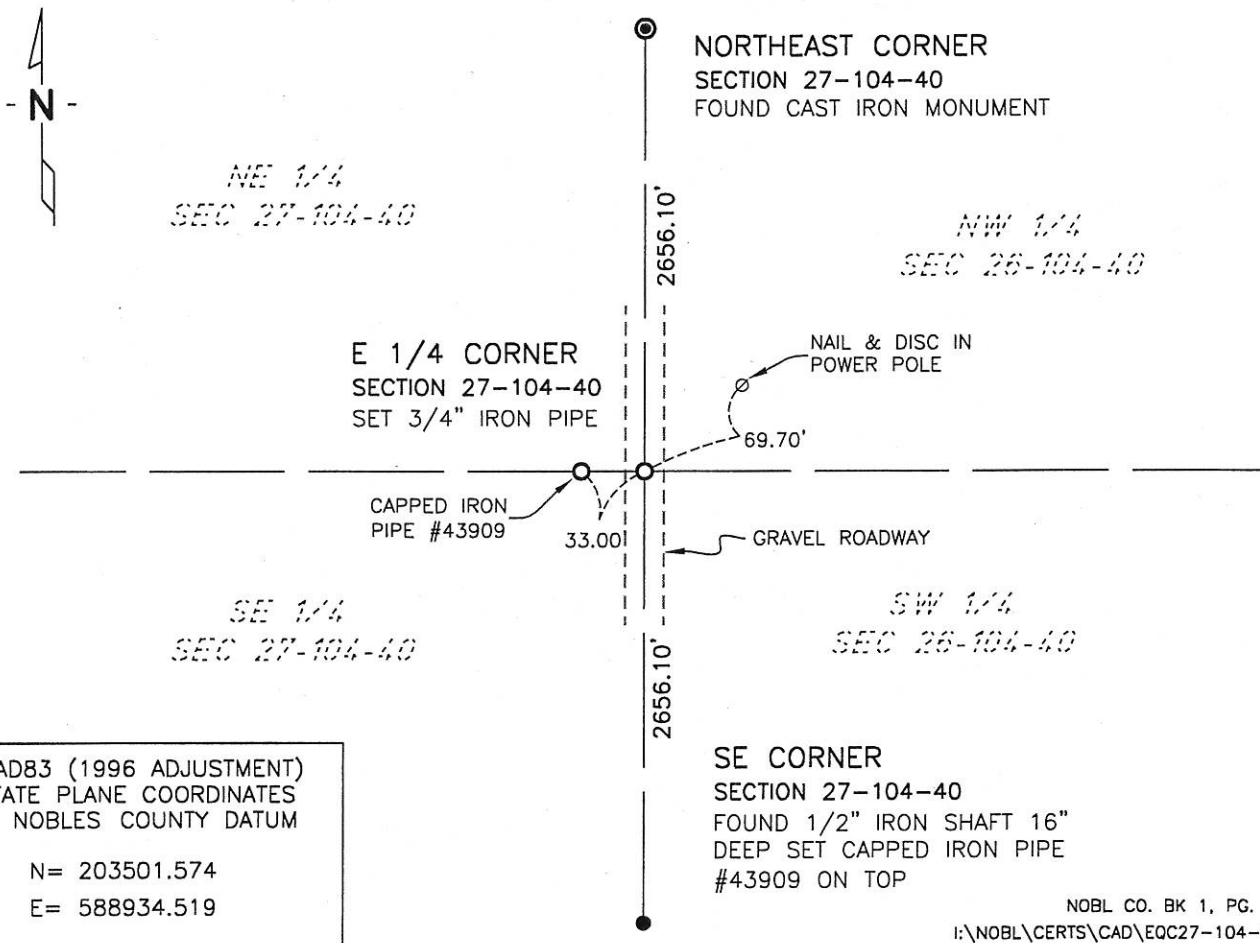
CERTIFICATE OF LOCATION OF GOVERNMENT CORNER

EAST QUARTER Corner of Section 27, Township 104, Range 40, 5th P.M.
 STATE OF MINNESOTA, County of NOBLES

At the corner location shown on the sketch:

- On 4/2006 found a NOTHING
DATE
- left monument as found, lowered monument, removed monument (explain)
- On 4/2006 3/4" CAPPED IRON PIPE #43909
DATE

SKETCH OF REFERENCE TIES



NAD83 (1996 ADJUSTMENT)
 STATE PLANE COORDINATES
 NOBLES COUNTY DATUM

N= 203501.574
 E= 588934.519

SE CORNER
 SECTION 27-104-40
 FOUND 1/2" IRON SHAFT 16"
 DEEP SET CAPPED IRON PIPE
 #43909 ON TOP

NOBL CO. BK 1, PG. 53-54
 I:\NOBL\CERTS\CAD\EQC27-104-40.DWG

Statement of evidence relative to this corner location is on back of page.

I hereby certify that this document and the data contained herein was prepared by me or under my direct supervision.

Joseph A. Haefner
 JOSEPH A. HAEFNER 3-2-2007
DATE

Registration No. 43909

Land surveyor, Professional Engineer
 County Surveyor, County Engineer

OFFICE OF THE COUNTY RECORDER
 County of _____

I hereby certify that this document was filed in the Co. Recorders office at ____M. on the _____ day of _____ A.D., 20____

County Recorder _____
 By _____, Deputy

DOCUMENT NO. _____