

UNITED STATES PUBLIC LAND SURVEY CORNER CERTIFICATE FOR

Land survey monuments situated in Section 7, Township 104 North, Range 40 West, of the Fifth Principal Meridian, Nobles County, Minnesota.

Previously recorded in N/A in County Recorder's Office.

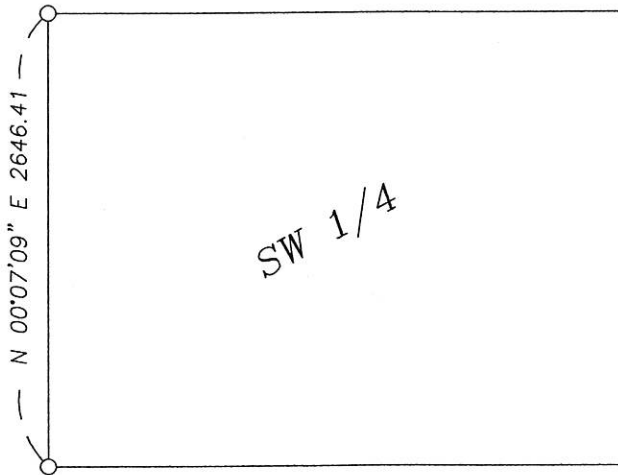
(Show reason for preparing this certificate, the evidence and detailed procedure used in establishing the corner position & monumentation found or placed.)

MONUMENT DESCRIPTION AND REMARKS: On 5/18/06 found a 10" X 12" stone 1.75' below surface
at southwest corner of Section 7 at intersection of township roads. Set 1" iron pipe with survey cap
23008 over top center of stone. On 5/18/06 found a 12" X 12" stone 0.4' below surface on township
road centerline at the west quarter corner of Section 7 in line with fence to east. Set 1" iron pipe with
survey cap 230087 over top of stone.

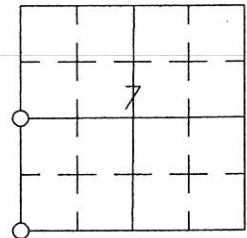
PLAN-VIEW

NOBLES COUNTY COORDINATE SYSTEM

W 1/4 COR.
 N = 219312.28
 E = 568014.95



SW COR.
 N = 216665.88
 E = 568009.45



I hereby certify that this land surveying document was prepared and related survey work was performed by me or under my direct supervision and that I am a duly licensed Land Surveyor under the laws of the State of Iowa.

Perry L. Zieske 5-25-06
 Signature Date

Perry Zieske
 License number 23008

Sheet 1 of 1

Corners to be Indexed

Corners	Section	Township	Range
W 1/4	7	104	40
SW	7	104	40