

UNITED STATES PUBLIC LAND SURVEY CORNER CERTIFICATE FOR

Land survey monuments situated in Section 10, Township 104 North, Range 40 West, of the Fifth Principal Meridian, Nobles County, Minnesota..

Previously recorded in N/A in County Recorder's Office.

(Show reason for preparing this certificate, the evidence and detailed procedure used in establishing the corner position & monumentation found or placed.)
 MONUMENT DESCRIPTION AND REMARKS: On August 21, 2013 we dug with backhoe for West 1/4 Corner &

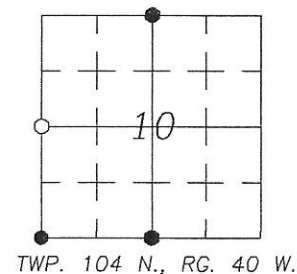
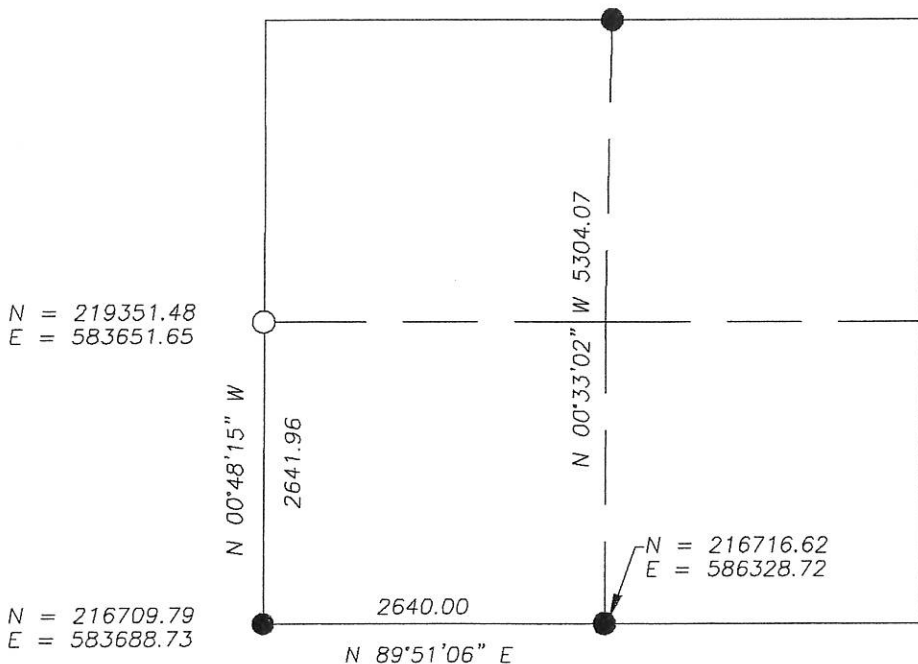
found a 7" X 13" stone 1.8' below surface at centerline of Township Road in line with fence. County

Highway records indicated stone in 1896, 1900, 1938 and 1963. I accepted stone as corner & set a 5/8"

Iron stake with survey cap 23008 over top center of stone.

NOBLES COUNTY COORDINATES NAD-83 (2007) **PLAN-VIEW**

N = 222020.45
 E = 586277.75



I hereby certify that this land survey, plan, or report was prepared by me and under my direct supervision and that I am a duly licensed Land Surveyor under the laws of the state of Minnesota.



Corners to be Indexed

Corners	Section	Township	Range
W 1/4	10	104	40

Signature Perry L. Zieske Typed or Printed Name: Perry L. Zieske
 Date 8-30-13 Reg. No.: 23008