

# CERTIFICATE OF LOCATION OF GOVERNMENT CORNER

NORTHEAST CLOSING CORNER Corner of Section 2, Township 104N, Range 41W

5th Principal Meridian, State of Minnesota, County of Nobles.

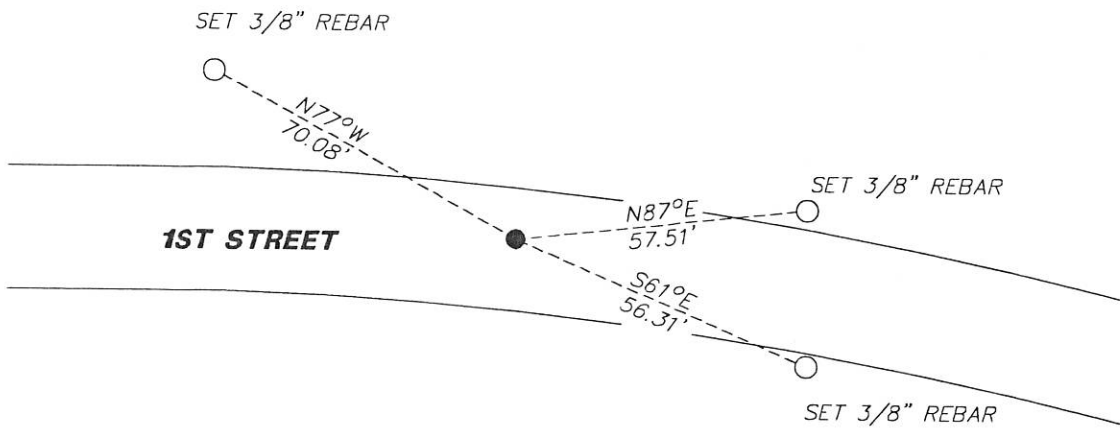
At the corner location shown on the sketch:

On 11/27/2017 found a 5/8" REBAR DOWN 0.8'  
DATE

left monument as found     lowered monument     removed monument (explain)

On \_\_\_\_\_ placed a \_\_\_\_\_  
DATE

### SKETCH OF REFERENCE TIES



N.T.S.

Statement of evidence for this corner location is on back of this page.

I hereby certify that this document was researched and prepared by me or under my direct supervision and that I am a licensed Land Surveyor under the laws of the State of Minnesota.

Signature L.M. Wilson

Date 1/29/18 License No. 49563

Title:

- Land Surveyor     Professional Engineer
- County Surveyor     County Engineer

DOCUMENT NUMBER A 357548  
Certified, Filed and or Recorded on  
March 07, 2018 1:05 PM

*Lynn M. Wilson*

NOBLES COUNTY RECORDER  
LYNN M. WILSON  
507-295-5268

Pages: 2

**Statement of Evidence:**

A-21

Northeast Closing Corner of Section 2, Township 104 North, Range 41 West, 5<sup>th</sup> Principal Meridian,  
Nobles County, Minnesota.

1868-Deputy Surveyor set a post in mound with pits.

1903 - In Book 22, Page 130, the County Surveyor's section breakdown does not indicate the type of monument, but gives distances to the following corners:

2662.4' to the N1/4 of 2

2452.0' to the E1/4 of 2

1928 - Nobles County Highway Department "Corner Ties Book" calls for a stone marking the corner location.

1962 - Nobles County Highway Department "Corner Ties Book" calls for a stake marking the corner location and the following ties were made:

N/D in top of corner fence post SW 43.15'

N/D in telephone pole NW 36.45'

Top of steel fence post NE 37.15'

1970 - Nobles County Highway Department "Corner Ties Book" calls for an iron pipe marking the corner location.

1992 - MNDOT ROW plans show a station of 156+87.42 at the corner location. Measurement to the E1/4 of 2 is 2446.22.

2017-On November 27th, Westwood Professional Services recovered a 5/8" rebar down 0.8' in gravel roadway. Westwood measures 2446.20' to the E1/4 of 2. Measurements agree with record measurements. Ties were found or set as shown on the front of this certificate.

Analysis of the recovered data, field evidence and survey measurements, indicates that the monument found is the correct perpetuation of this corner. For additional information concerning this corner please contact Westwood Professional Services.