

# CERTIFICATE OF LOCATION OF GOVERNMENT CORNER

NORTHEAST CLOSING CORNER Corner of Section 4, Township 104N, Range 41W

5th Principal Meridian, State of Minnesota, County of Nobles.

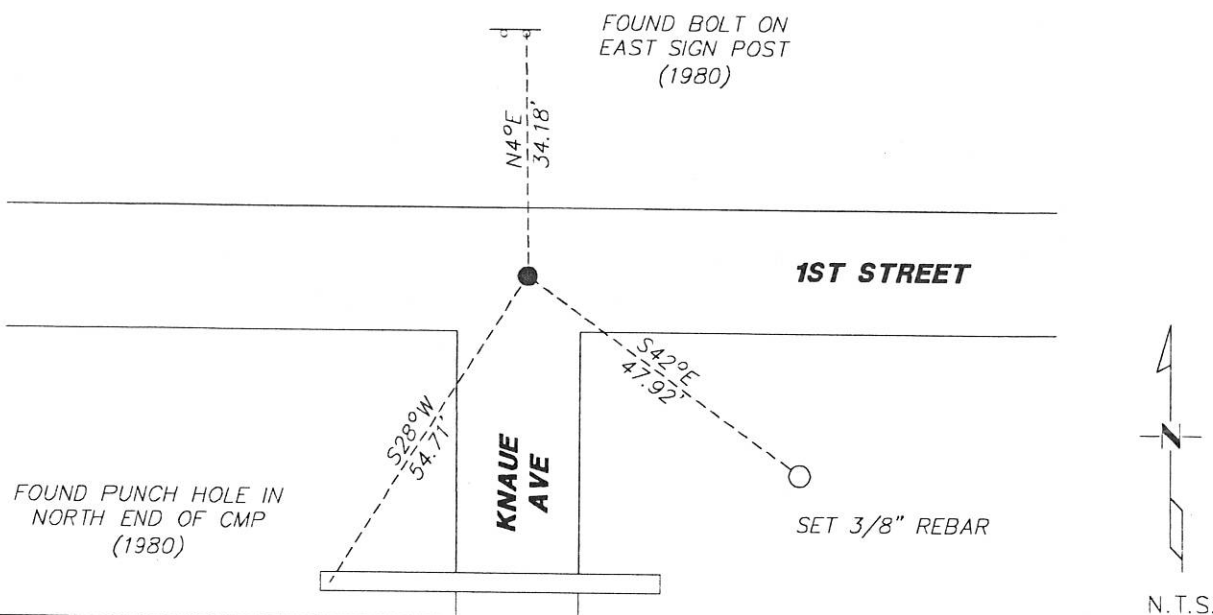
At the corner location shown on the sketch:

☒ On 11/28/2017 found a 5/8" REBAR AT THE CENTERLINE INTERSECTION  
DATE

☒ left monument as found ☐ lowered monument ☐ removed monument (explain)

☐ On \_\_\_\_\_ placed a \_\_\_\_\_  
DATE

## SKETCH OF REFERENCE TIES



Statement of evidence for this corner location is on back of this page.

I hereby certify that this document was researched and prepared by me or under my direct supervision and that I am a licensed Land Surveyor under the laws of the State of Minnesota.

Signature Lynn M. Wilson

Date 1/29/18 License No. 49563

Title:

☒ Land Surveyor ☐ Professional Engineer  
☐ County Surveyor ☐ County Engineer

DOCUMENT NUMBER A 357550

Certified, Filed and or Recorded on  
March 07, 2018 1:15 PM

*Lynn M. Wilson*

NOBLES COUNTY RECORDER  
LYNN M. WILSON  
507-295-5268

Pages: 2

**Statement of Evidence:**

A-13

Northeast Closing Corner of Section 4, Township 104 North, Range 41 West, 5<sup>th</sup> Principal Meridian,  
Nobles County, Minnesota.

1868-Deputy Surveyor set a post in mound with pits.

1892- Nobles County Highway Department "Corner Ties Book" calls for a stone set to mark the corner location.

1932 - Nobles County Highway Department "Corner Ties Book" calls for a stone to mark the corner location.

1977 - Nobles County Highway Department "Corner Ties Book" notes a stone found down 10".

1979 - MNDOT ROW plans show a station of 51+16.60 at the corner location. Measurement to the E1/4 of 4 is 2466.84.

1980 - Nobles County Highway Department "Corner Ties Book" notes a 5/8" by 24" iron pin placed to mark the corner location. The following ties were made:

N/D in power pole	NW	55.37'
Punch hole in CMP	SW	54.71'
Bottom bolt on right		
post warning sign	North	34.18'

2017-On November 28th, Westwood Professional Services recovered a 5/8" rebar down 1' and two ties from 1980. This monument agrees with MNDOT ROW plan measurements. Ties were found or set as shown on the front of this certificate.

Analysis of the recovered data, field evidence and survey measurements, indicates that the monument found is the correct perpetuation of this corner. For additional information concerning this corner please contact Westwood Professional Services.

2/1/95/11