

CERTIFICATE OF LOCATION OF GOVERNMENT CORNER

NORTHEAST CLOSING CORNER Corner of Section 5, Township 104N, Range 41W

5th Principal Meridian, State of Minnesota, County of Nobles.

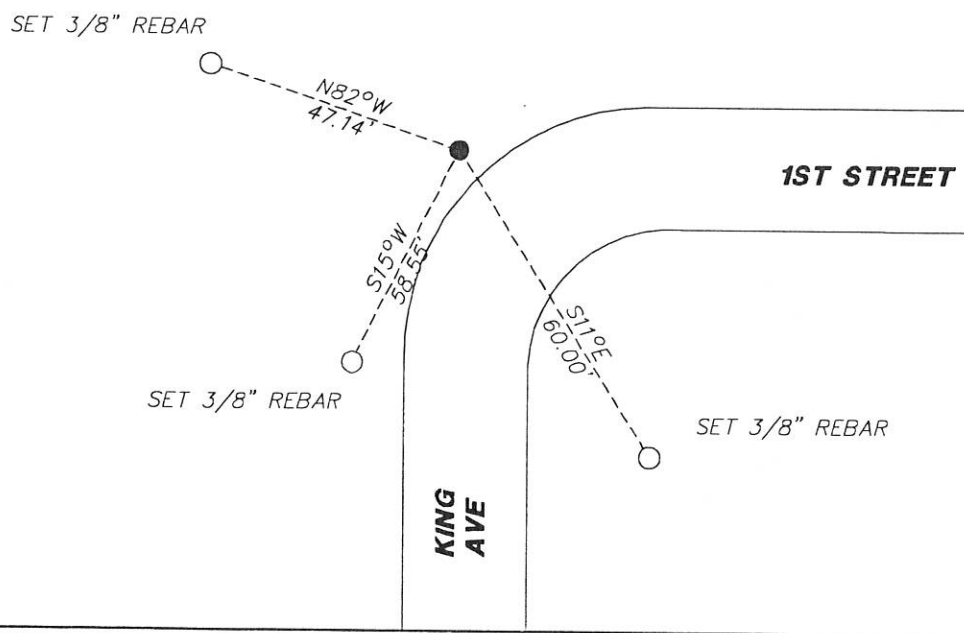
At the corner location shown on the sketch:

On 11/28/2017 found a 1" IRON PIPE 0.4' DOWN.
DATE

left monument as found lowered monument removed monument (explain)

On _____ placed a _____
DATE

SKETCH OF REFERENCE TIES



Statement of evidence for this corner location is on back of this page.

I hereby certify that this document was researched and prepared by me or under my direct supervision and that I am a licensed Land Surveyor under the laws of the State of Minnesota.

Signature K.W.L.

Date 1/29/18 License No. 49563

Title:

- Land Surveyor Professional Engineer
- County Surveyor County Engineer

DOCUMENT NUMBER A 357551
Certified, Filed and or Recorded on
March 07, 2018 1:20 PM

Lynn M. Wilson

NOBLES COUNTY RECORDER
LYNN M. WILSON
507-295-5268

Pages: 2

Statement of Evidence:

A-9

Northeast Closing Corner of Section 5, Township 104 North, Range 41 West, 5th Principal Meridian,
Nobles County, Minnesota.

1868-Deputy Surveyor set a post in mound with pits.

1892- Nobles County Highway Department "Corner Ties Book" calls for a stone set to mark the corner location.

1895 - Nobles County Highway Department "Corner Ties Book" calls for a stone to mark the corner location.

1932 - Nobles County Highway Department "Corner Ties Book" calls for a stone to mark the corner location.

1970 - MN DNR survey notes an iron pipe set and gives a distance of 2527.54' to the E1/4 of 5.

2017-On November 28th, Westwood Professional Services recovered a 1" iron pipe down 0.4'. Westwood measures 2527.28' to the E1/4 of 5 which agrees with distance shown on MNDNR survey. Ties were found or set as shown on the front of this certificate.

Analysis of the recovered data, field evidence and survey measurements, indicates that the monument found is the correct perpetuation of this corner. For additional information concerning this corner please contact Westwood Professional Services.

[Handwritten signature]
8/19/11