

CERTIFICATE OF LOCATION OF GOVERNMENT CORNER

NORTHEAST CLOSING CORNER Corner of Section 6, Township 104N, Range 41W

5th Principal Meridian, State of Minnesota, County of Nobles.

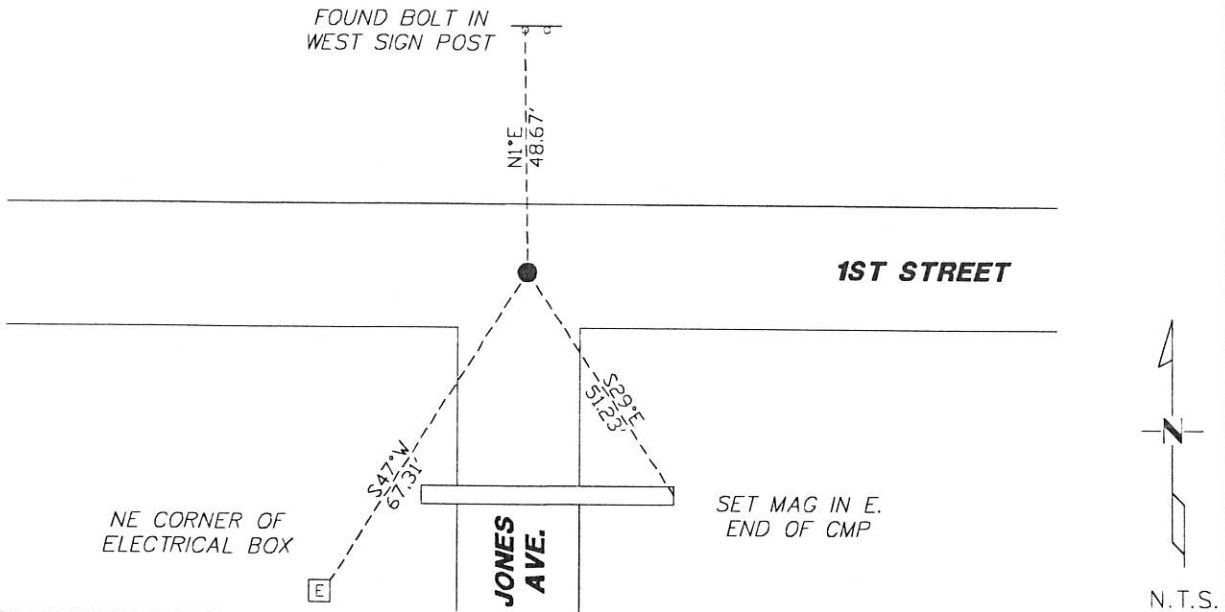
At the corner location shown on the sketch:

On 11/28/2017 found a PK NAIL WITH HEAD BROKE OFF
DATE

left monument as found lowered monument removed monument (explain)

On 11/28/2017 placed a NEW PK NAIL IN PLACE OF THE FOUND BROKEN ONE
DATE

SKETCH OF REFERENCE TIES



Statement of evidence for this corner location is on back of this page.

I hereby certify that this document was researched and prepared by me or under my direct supervision and that I am a licensed Land Surveyor under the laws of the State of Minnesota.

Signature L.M. Wilson

Date 1/29/18 License No. 49563

Title:

- Land Surveyor Professional Engineer
- County Surveyor County Engineer

DOCUMENT NUMBER A 357552
Certified, Filed and or Recorded on
March 07, 2018 1:25 PM

Lynn M. Wilson

NOBLES COUNTY RECORDER
LYNN M. WILSON
507-295-5268

Statement of Evidence:

A-5

Northeast Closing Corner of Section 6, Township 104 North, Range 41 West, 5th Principal Meridian,
Nobles County, Minnesota.

1868-Deputy Surveyor set a post in mound with pits.

1894 - Nobles County Highway Department "Corner Ties Book" notes a stone set marking the corner location.

1950 - Nobles County Highway Department "Corner Ties Book" notes an iron pin marking the corner location.

1960 - Nobles County Highway Department "Corner Ties Book" notes an iron pin and a wood stake placed.

1980 - Nobles County Highway Department "Corner Ties Book" notes an iron pin marking the corner location. The following ties were made:

N/D in power pole	SW	60.53'
N/D in corner fence post	SE	61.99'
N/D in brace post	NE	72.53'

2017-On November 28th, Westwood Professional Services recovered a PK nail which was damaged. It was removed and a new one was set. Distance to adjacent section corners fit within reason and the monument fits occupation. Ties were found or set as shown on the front of this certificate.

Analysis of the recovered data, field evidence and survey measurements, indicates that the monument found is the correct perpetuation of this corner. For additional information concerning this corner please contact Westwood Professional Services.

[Handwritten signature]
2/1/2011