

15  
5/4  
Sec 18  
104  
41

COPY

Index N-3

# CERTIFICATE OF LOCATION OF GOVERNMENT CORNER

NORTH QUARTER Corner of Section 19, Township 104N, Range 41W

5th Principal Meridian, State of Minnesota, County of Nobles.

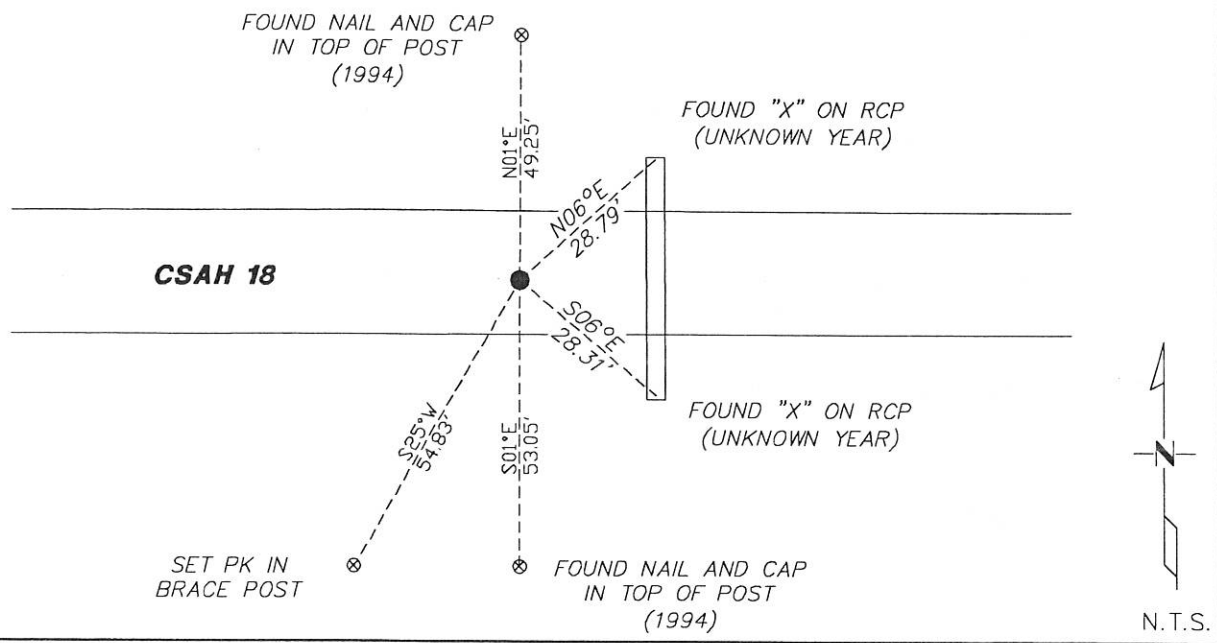
At the corner location shown on the sketch:

On 11/10/2017 found a PK NAIL ON CENTERLINE AND A FENCE LINE TO THE SOUTH  
DATE

left monument as found     lowered monument     removed monument (explain)

On \_\_\_\_\_ placed a \_\_\_\_\_  
DATE

### SKETCH OF REFERENCE TIES



Statement of evidence for this corner location is on back of this page.

I hereby certify that this document was researched and prepared by me or under my direct supervision and that I am a licensed Land Surveyor under the laws of the State of Minnesota.

Signature Lynn M. Wilson

Date 1/29/18 License No. 49563

Title:

- Land Surveyor     Professional Engineer
- County Surveyor     County Engineer

DOCUMENT NUMBER A 357577  
Certified, Filed and or Recorded on  
March 07, 2018 3:30 PM

*Lynn M. Wilson*

NOBLES COUNTY RECORDER  
LYNN M. WILSON  
507-295-5268

Pages: 2

**Statement of Evidence:**

N-3

North Quarter Corner of Section 19, Township 104 North, Range 41 West, 5<sup>th</sup> Principal Meridian, Nobles County, Minnesota.

1868-Deputy Surveyor Richard N. L. Jeorlt, set a post in mound with pits for the section corner.

1928-Nobles County Highway Department "Corner Ties Book" calls for a stake as the corner position.

1954-Nobles County Highway Department "Corner Ties Book" calls for a stake as the corner position.

1982-Nobles County Highway Department "Corner Ties Book" calls finding nothing, placed assumed corner.

1983-C.S.A.H. No. 18 shows corner location at Station 25+36.68.

1993-Nobles County Highway Department "Corner Ties Book" calls for finding the assumed corner and placed a 1-3/4" PK nail over assumed corner after overlay.

1994-Nobles County Highway Department "Corner Ties Book" calls for these ties:

N&BC IN COR FE POST N. 49.25'

N&BC IN COR FE POST S. 53.05'

N&BC IN PP S.W. 58.25'

2017-On November 10th, Westwood Professional Services found a PK nail at E/W centerline and online with fence running south. Also found 2 1994 Highway Department ties, which fits. Pulled PK and found a magnetic beep underneath. Did not dig it up due to new bituminous. The found monument matches the stationing shown on C.S.A.H. No. 13 highway plans. Accepting the found PK nail as the position of the corner. Ties were found or set as shown on the front of this certificate.

Analysis of the recovered data, field evidence and survey measurements, indicates that the monument found is the correct perpetuation of this corner. For additional information concerning this corner please contact Westwood Professional Services.