

5/4 sec 2 104 41

COPY

CERTIFICATE OF LOCATION OF GOVERNMENT CORNER

NORTH QUARTER Corner of Section 11, Township 104N, Range 41W

5th Principal Meridian, State of Minnesota, County of Nobles.

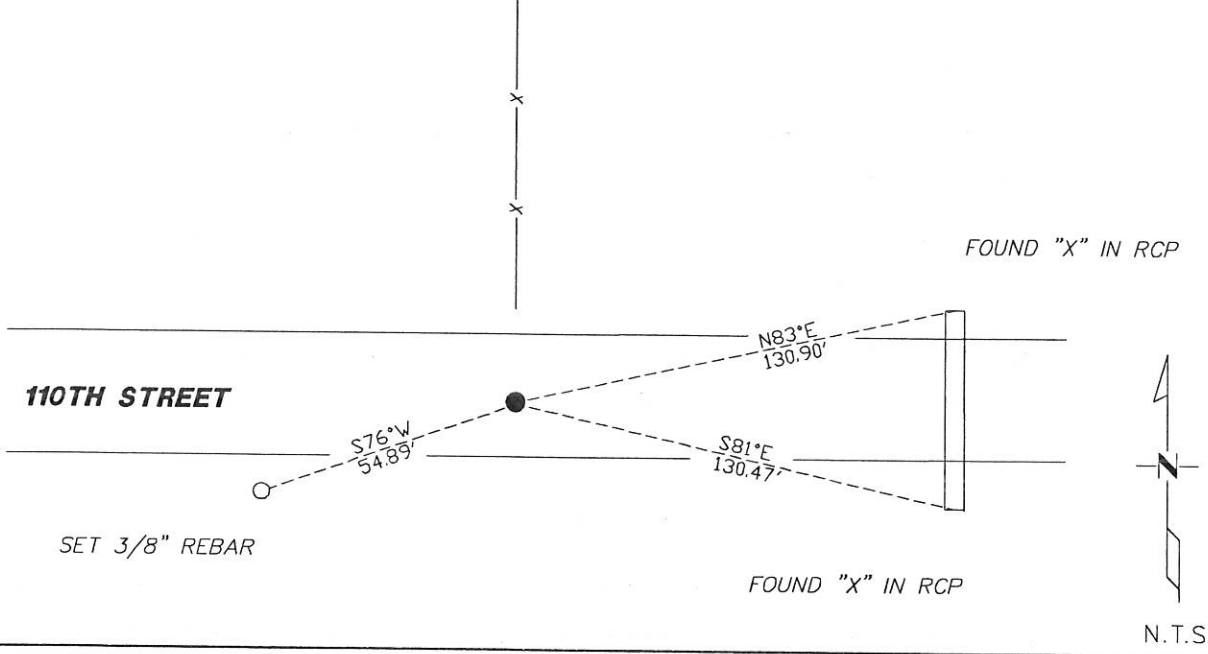
At the corner location shown on the sketch:

On 11/28/2017 found a 5/8" REBAR ON CENTERLINE AND A FENCE LINE TO THE NORTH
DATE

left monument as found lowered monument removed monument (explain)

On _____ placed a _____
DATE

SKETCH OF REFERENCE TIES



Statement of evidence for this corner location is on back of this page.

I hereby certify that this document was researched and prepared by me or under my direct supervision and that I am a licensed Land Surveyor under the laws of the State of Minnesota.

Signature L.M. Wilson

Date 1/29/18 License No. 49563

Title:

- Land Surveyor Professional Engineer
- County Surveyor County Engineer

DOCUMENT NUMBER A 357564
Certified, Filed and or Recorded on
March 07, 2018 2:25 PM

Lynn M. Wilson

NOBLES COUNTY RECORDER
LYNN M. WILSON
507-295-5268

Pages: 2

Statement of Evidence:

E-19

North Quarter Corner of Section 11, Township 104 North, Range 41 West, 5th Principal Meridian, Nobles County, Minnesota.

1868-Deputy Surveyor set a post in mound with pits.

1903 - In Book 22, Page 130, the County Surveyor's section breakdown does not indicate the type of monument, but gives distances to the following corners:

2622.9' to the NE of 11

2622.9' to the NW of 11

1977 - Nobles County Highway Department "Corner Ties Book" calls for 4x4 hub down 12" to mark the corner location.

1979 - MNDOT ROW plans show a station of 236+61.10 at the corner location. Measurement to the NW11 is 2618.68 and 2625.41 to the NE11.

1980 - Nobles County Highway Department "Corner Ties Book" notes a placed 24" iron pin. The following corner ties were recorded:

X in north end culvert NE 130.90'

X in south end culvert SE 130.47'

2017-On November 28th, Westwood Professional Services recovered a 5/8" rebar down 0.9' in gravel roadway centerline and in line with fence north. Two ties from 1980 were also recovered. Westwood measures 2624.74' to the NE of 11 and 2617.92' to the NW of 11. These distances agree within reason to record measurements. Ties were found or set as shown on the front of this certificate.

Analysis of the recovered data, field evidence and survey measurements, indicates that the monument found is the correct perpetuation of this corner. For additional information concerning this corner please contact Westwood Professional Services.

8/1/95