

5/14  
226 21  
104 41

**COPY**

Index            R-11

# CERTIFICATE OF LOCATION OF GOVERNMENT CORNER

NORTH QUARTER Corner of Section 28, Township 104N, Range 41W

5th Principal Meridian, State of Minnesota, County of Nobles.

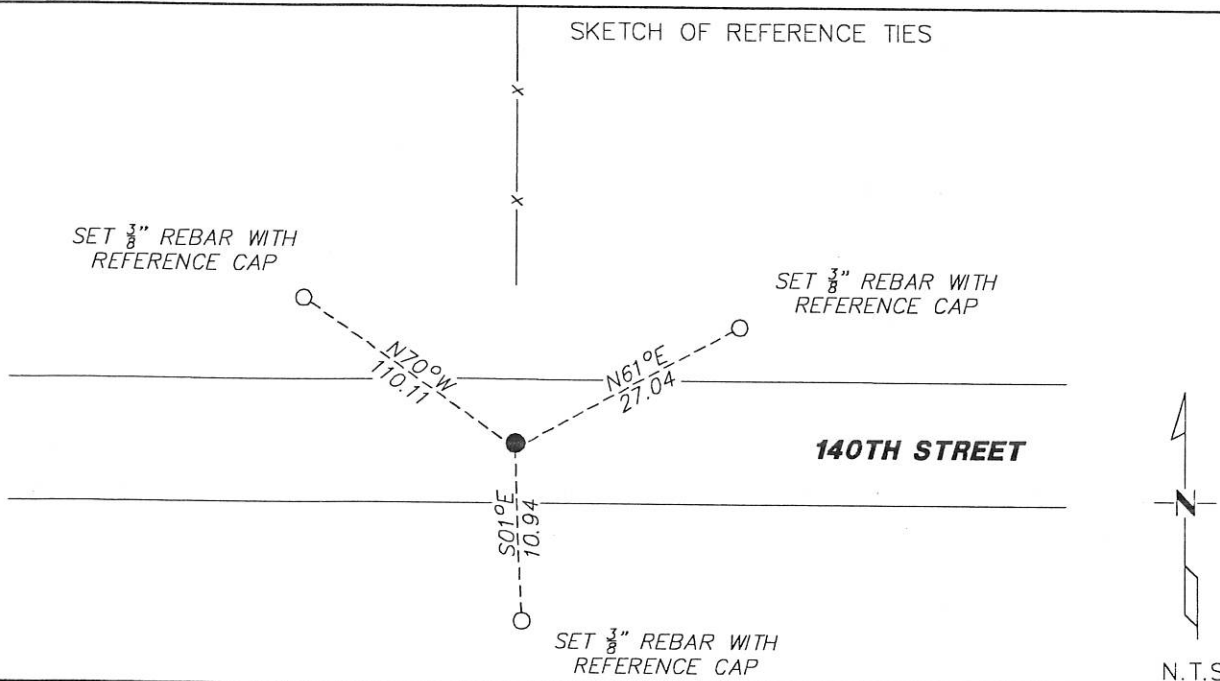
At the corner location shown on the sketch:

On            found             
DATE

left monument as found     lowered monument     removed monument (explain)

On 11/09/2017 placed a 5/8" REBAR CAPPED 49563, AT EAST/WEST CENTERLINE AND ON LINE  
DATE                        
WITH A FENCE RUNNING NORTH.

SKETCH OF REFERENCE TIES



Statement of evidence for this corner location is on back of this page.

I hereby certify that this document was researched and prepared by me or under my direct supervision and that I am a licensed Land Surveyor under the laws of the State of Minnesota.

Signature *L.M. Wilson*

Date 1/29/18 License No. 49563

Title:

- Land Surveyor       Professional Engineer
- County Surveyor     County Engineer

**DOCUMENT NUMBER A 357589**  
Certified, Filed and or Recorded on  
March 08, 2018 8:35 AM

*Lynn M. Wilson*

NOBLES COUNTY RECORDER  
LYNN M. WILSON  
507-295-5268

KRIS WROOLIE  
Minnesota License No. 49563

**Statement of Evidence:**

R-11

North Quarter Corner of Section 28, Township 104 North, Range 41 West, 5<sup>th</sup> Principal Meridian, Nobles County, Minnesota.

1868-Deputy Surveyor Richard N. L. Jeorlt, set a post in mound with pits for the section corner.

1900-Surveyor's Record Book A-2, page 382, prepared by County Surveyor M.S. Smith shows original stake and stone at the corner location.

1900-Nobles County Highway Department "Corner Ties Book" calls for a stone at the corner location.

1936-Nobles County Highway Department "Corner Ties Book" calls for a stake at the corner location.

2017-On November 9th, Westwood Professional Services searched at E/W centerline and online with fence running north, found nothing. Set a 5/8" rebar capped 49563 at E/W centerline and online with fence running north. Ties were set as shown on the front of this certificate.

Analysis of the recovered data, field evidence and survey measurements, indicates that the monument found is the correct perpetuation of this corner. For additional information concerning this corner please contact Westwood Professional Services.

*Kris Wroolie*  
2/10/17