

S/4
Sec 3
104
41

COPY

CERTIFICATE OF LOCATION OF GOVERNMENT CORNER

NORTH QUARTER Corner of Section 10, Township 104N, Range 41W

5th Principal Meridian, State of Minnesota, County of Nobles.

At the corner location shown on the sketch:

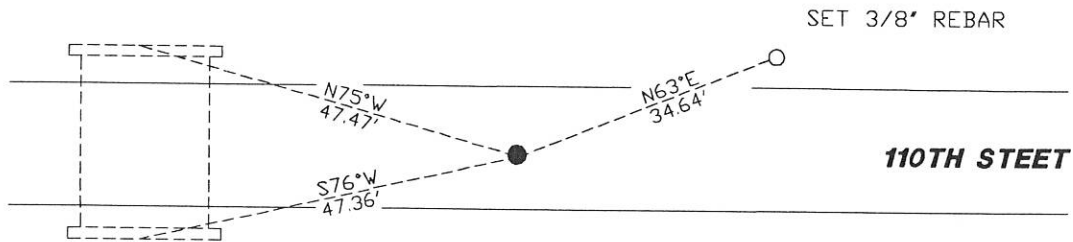
On 11/28/2017 found a 1/2" REBAR DOWN 1.1' IN GRAVEL ROADWAY CENTERLINE EAST AND WEST.
DATE

left monument as found lowered monument removed monument (explain)

On _____ placed a _____
DATE

SKETCH OF REFERENCE TIES

BROKEN PIPE ON CENTER OF HEADWALL



BROKEN PIPE ON CENTER OF HEADWALL



N.T.S.

Statement of evidence for this corner location is on back of this page.

I hereby certify that this document was researched and prepared by me or under my direct supervision and that I am a licensed Land Surveyor under the laws of the State of Minnesota.

Signature L.M. Wilson

Date 1/29/18 License No. 49563

Title:

- Land Surveyor Professional Engineer
- County Surveyor County Engineer

DOCUMENT NUMBER A 357562
Certified, Filed and or Recorded on
March 07, 2018 2:15 PM

Lynn M. Wilson

NOBLES COUNTY RECORDER
LYNN M. WILSON
507-295-5268

Pages: 2

Statement of Evidence:

E-15

North Quarter Corner of Section 10, Township 104 North, Range 41 West, 5th Principal Meridian, Nobles County, Minnesota.

1868-Deputy Surveyor set a post in mound with pits.

1977 - Nobles County Highway Department "Corner Ties Book" calls for spike down 12" marking the corner location.

1979 - MNDOT ROW plans show a station of 183+92.24 at the corner location. Measurement to the NW10 is 2699.31 and 2650.18 to the NE10.

1980 - Nobles County Highway Department "Corner Ties Book" notes a 5/8" x 24" iron pin placed to mark the corner location. The following ties were made:

NE corner on S side of bridge	West	39.25'
E face of NE guardrail on N side of bridge	West	37.40'

2017-On November 28th, Westwood Professional Services recovered a 1/2" rebar down 1.1' in gravel roadway centerline east and west which agrees with MNDOT ROW plan measurements. Ties were found or set as shown on the front of this certificate.

Analysis of the recovered data, field evidence and survey measurements, indicates that the monument found is the correct perpetuation of this corner. For additional information concerning this corner please contact Westwood Professional Services.

8/1/2017