

S1/4 Sec 30 104 41

COPY
Index V-3

CERTIFICATE OF LOCATION OF GOVERNMENT CORNER

NORTH QUARTER Corner of Section 31, Township 104N, Range 41W

5th Principal Meridian, State of Minnesota, County of Nobles.

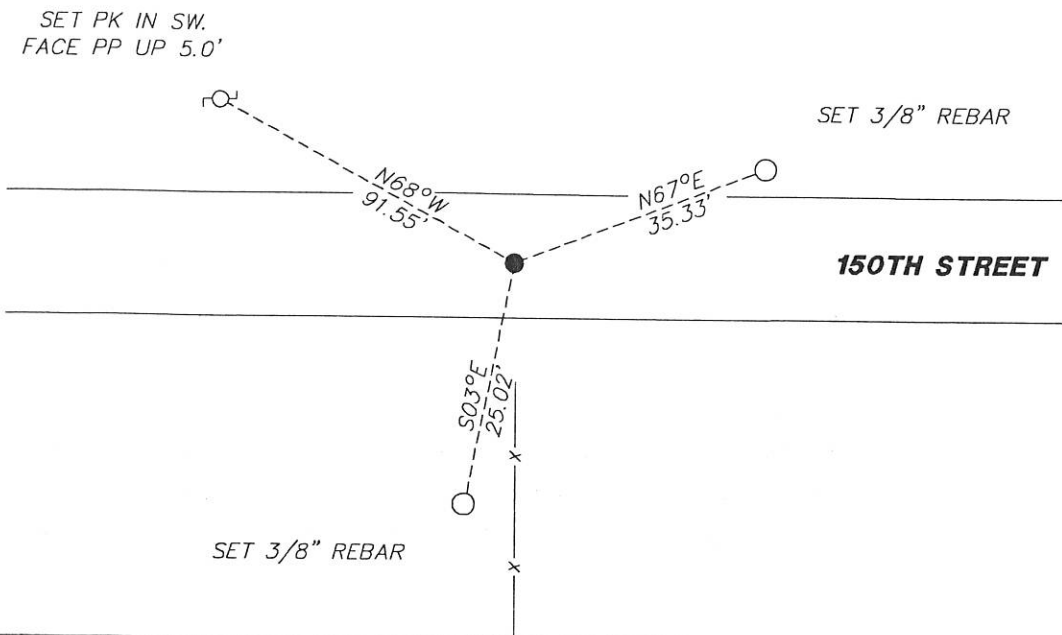
At the corner location shown on the sketch:

On 11/09/2017 found a 1/2" PINCHED IRON PIPE, WHICH LAND ON EAST/WEST CENTERLINE
DATE AND ON LINE WITH A FENCE RUNNING SOUTH.

left monument as found lowered monument removed monument (explain)

On _____ placed a _____
DATE

SKETCH OF REFERENCE TIES



N.T.S.

Statement of evidence for this corner location is on back of this page.

I hereby certify that this document was researched and prepared by me or under my direct supervision and that I am a licensed Land Surveyor under the laws of the State of Minnesota.

Signature Lynn M. Wilson

Date 1/29/18 License No. 49563

Title:

- Land Surveyor Professional Engineer
- County Surveyor County Engineer

DOCUMENT NUMBER A 357599
Certified, Filed and or Recorded on
March 08, 2018 9:25 AM

Lynn M. Wilson

NOBLES COUNTY RECORDER
LYNN M. WILSON
507-295-5268

Pages: 2

KRIS WROOLIE
Minnesota License No. 49563

Statement of Evidence:

V-3

North Quarter Corner of Section 31, Township 104 North, Range 41 West, 5th Principal Meridian, Nobles County, Minnesota.

1868-Deputy Surveyor Richard N. L. Jeorlt, set a post in mound with pits for the section corner.

1980-Nobles County Highway Department "Corner Ties Book" calls for a found 3/4" x 48" iron pin as the corner position.

Ties-

N&D IN COR FE POST S. 33.30'

N&D IN PP S.E. 71.95'

"X" ON N.E. COR BRIDGE W. 63.65'

"X" ON S.E. COR BRIDGE W. 70.25'

2017-On November 9th, Westwood Professional Services found a 1/2" pinch top pipe but no Nobles County Highway Department ties. The monument lands on E/W centerline and is online with fence running south. The 1/2" pinch top fits GLO proportion distance to +/-1 ft. Accepting found monument as the position of the corner. Tie were found or set as shown on the front of this certificate.

Analysis of the recovered data, field evidence and survey measurements, indicates that the monument found is the correct perpetuation of this corner. For additional information concerning this corner please contact Westwood Professional Services.

[Handwritten signature]
8/1/2011