

RS

5/4  
Sec 32  
104  
41

COPY

Index A-7

# CERTIFICATE OF LOCATION OF GOVERNMENT CORNER

NORTH QUARTER Corner of Section 5, Township 103N, Range 41W

5th Principal Meridian, State of Minnesota, County of Nobles.

At the corner location shown on the sketch:

☒ On 11/8/17 found a PK NAIL ON CENTERLINE AND A FENCE LINE TO THE SOUTH  
DATE

☒ left monument as found ☐ lowered monument ☐ removed monument (explain)

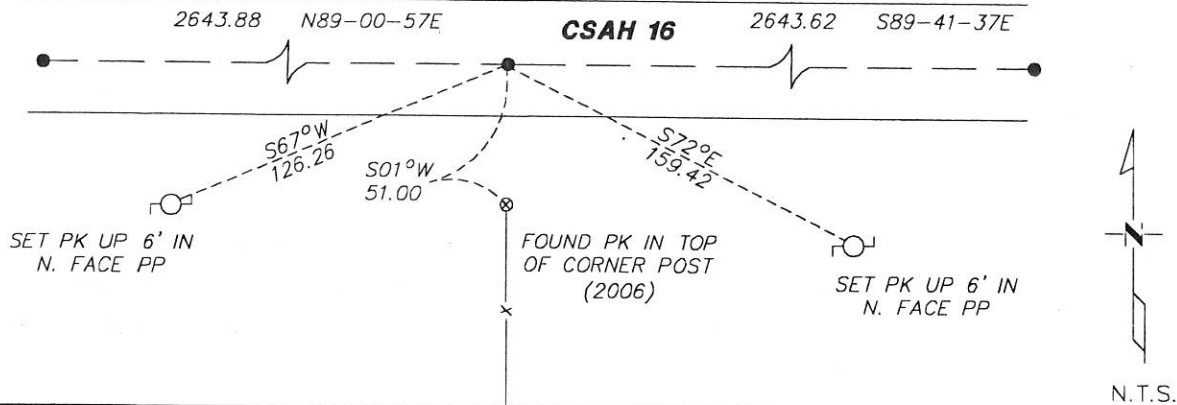
☐ On \_\_\_\_\_ placed a \_\_\_\_\_  
DATE

BEARINGS AND DISTANCES  
ARE BASED ON MN STATE  
PLANE SOUTH

SKETCH OF REFERENCE TIES

NW CORNER OF  
SECTION 5 (2006)

NE CORNER OF  
SECTION 5 (2006)



Statement of evidence for this corner location is on back of this page.

I hereby certify that this document was researched and prepared by me or under my direct supervision and that I am a licensed Land Surveyor under the laws of the State of Minnesota.

Signature Lynne Wilson

Date 1/11/18 License No. 49563

Title:

☒ Land Surveyor ☐ Professional Engineer

☐ County Surveyor ☐ County Engineer

DOCUMENT NUMBER A 357453  
Certified, Filed and or Recorded on  
March 05, 2018 9:00 AM

Lynne Wilson RS

NOBLES COUNTY RECORDER  
LYNNE M. WILSON  
507-295-5258

Pages: 2

**Statement of Evidence:**

A-7

North Quarter Corner of Section 5, Township 103 North, Range 41 West, 5<sup>th</sup> Principal Meridian, Nobles County, Minnesota.

1868-Deputy Surveyor set a post in mound with pits.

1989-State Aid Road No. 16 plans shows corner at Station 26+43.47

1990-Nobles County Highway Department "Corner Ties Book" calls for placing an 11" bridge pin.

1991-Nobles County Highway Department "Corner Ties Book" calls for placing a steel pin after grading.

2006-On February 23rd, Ulteig Engineers found a 5/8" rebar, set ties, and filed a Certificate of Location Doc. No. 311118

2017- Westwood Professional Services found a P.K. Nail and ties from the 2006 Certificate. Upon removing the PK nail, there was no magnetic indication under it. The PK nail was replaced. The monument agrees with the 2006 position and with State Aid Road No. 16 plans. Accepting the PK nail as the corner. Ties were found or set as shown on the front of this certificate.

Analysis of the recovered data, field evidence and survey measurements, indicates that the monument found is the correct perpetuation of this corner. For additional information concerning this corner please contact Westwood Professional Services.

*[Handwritten signature]*  
2/1/18