

5/4
Sec 34
104
41

CERTIFICATE OF LOCATION OF GOVERNMENT CORNER

NORTH QUARTER Corner of Section 3, Township 103N, Range 41W

5th Principal Meridian, State of Minnesota, County of Nobles.

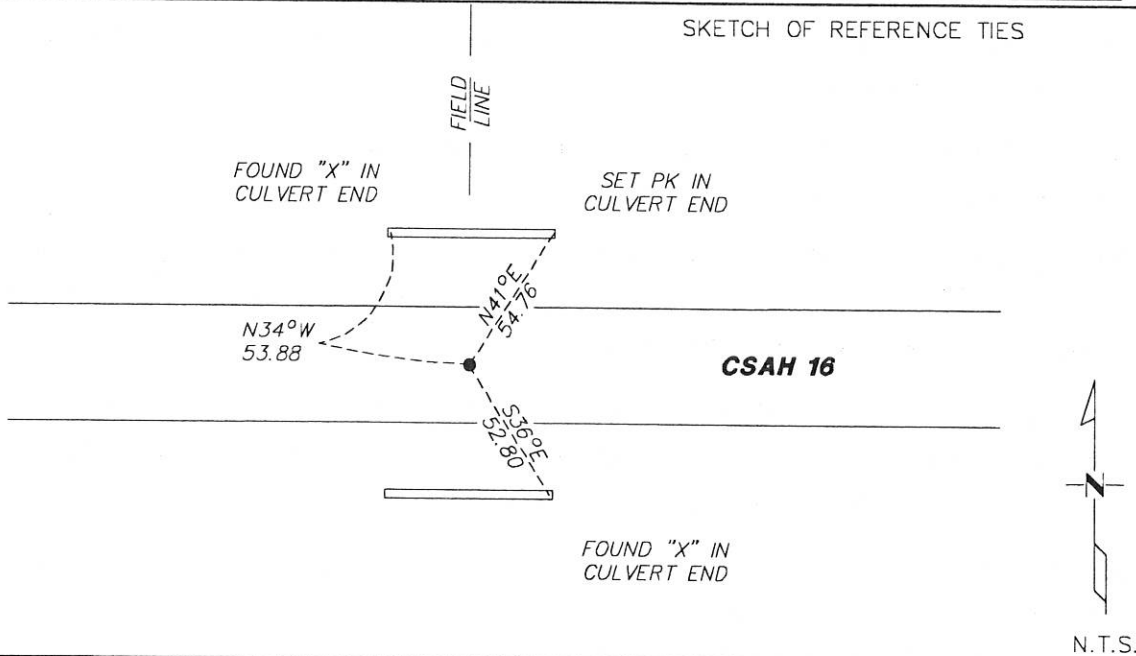
At the corner location shown on the sketch:

On 11/8/17 found a PK NAIL ON CENTERLINE
DATE

left monument as found lowered monument removed monument (explain)

On _____ placed a _____
DATE

SKETCH OF REFERENCE TIES



Statement of evidence for this corner location is on back of this page.

I hereby certify that this document was researched and prepared by me or under my direct supervision and that I am a licensed Land Surveyor under the laws of the State of Minnesota.

Signature TJ Wald

Date 1/11/18 License No. 49563

Title:

Land Surveyor Professional Engineer

County Surveyor County Engineer

DOCUMENT NUMBER A 377455
Certified, Filed and or Recorded on
March 05, 2018 9:10 AM

Lynn M. Wilson

NOBLES COUNTY RECORDER
LYNN M. WILSON
507-295-5266

Statement of Evidence:

A-15

North Quarter Corner of Section 3, Township 103 North, Range 41 West, 5th Principal Meridian, Nobles County, Minnesota.

1867-Deputy Surveyor set a post in mound with pits.

1989-State Aid Road No. 16 plans shows corner at Station 132+21.7

1990-Nobles County Highway Department "Corner Ties Book" calls for a 11" bridge pin being placed at the corner location.

1991-Nobles County Highway Department "Corner Ties Book" calls for a steel pin being found at the corner location after grading.

Undated-Nobles County Highway Department "Corner Ties Book" calls for a 5/8" iron monument being found at the corner location

2008-A survey dated 4/21/08 prepared by Perry L. Zieske, for project number N 0805 S, shows a 5/8" iron stake being in place for the corner position. The survey also shows a distance of 2647.47 to the SW of Sec. 34 T.104 R41 (NW of Sec. 3 T.103 R41)

2013-A survey dated 12/12/2013 prepared by Perry L. Zieske, for project number N 1318 SB, shows a 5/8" iron stake being in place for the corner position. The survey also shows a distance of 2647.46 to the SW of Sec. 34 T.104 R41 (NW of Sec. 3 T.103 R41).

2014-A survey dated 2/18/2014 prepared by Perry L. Zieske, for project number N 1318 SB, shows a 5/8" iron stake being in place for the corner position. The survey also shows a distance of 2647.46 to the SW of Sec. 34 T.104 R41 (NW of Sec. 3 T.103 R41).

2017-On November 8th, Westwood Professional Services found a PK nail with a deep beep underneath and the 3 Nobles County Highway Department ties. Did not dig up deep beep due to new bituminous on the road. The found PK nail is on E/W centerline and online with fence line to to the north. The found monument also fits S.A.R. No. 16 plans and the Zieske surveys. Accepting the found PK nail as the position of the corner.

[Handwritten signature]
Date