

165

S1/4  
Sec 35

104 41

COPY

Index A-19

# CERTIFICATE OF LOCATION OF GOVERNMENT CORNER

NORTH QUARTER Corner of Section 2, Township 103N, Range 41W

5th Principal Meridian, State of Minnesota, County of Nobles.

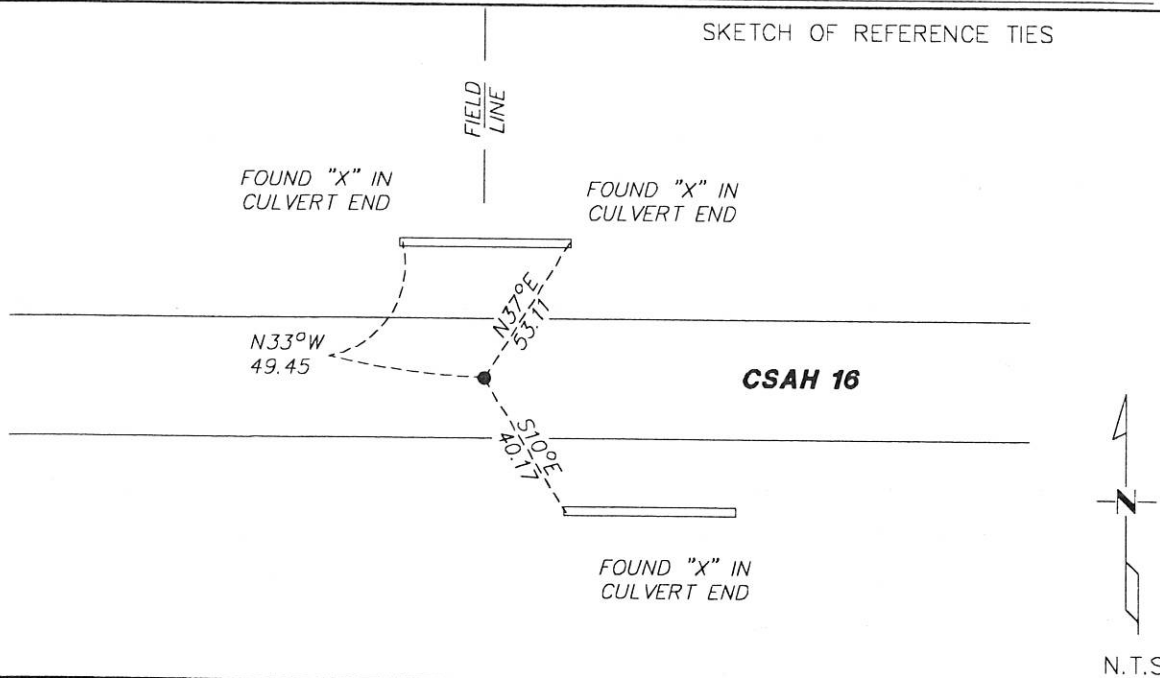
At the corner location shown on the sketch:

☒ On 11/8/17 found a PK NAIL ON CENTERLINE  
DATE

☒ left monument as found ☐ lowered monument ☐ removed monument (explain)

☐ On \_\_\_\_\_ placed a \_\_\_\_\_  
DATE

## SKETCH OF REFERENCE TIES



Statement of evidence for this corner location is on back of this page.

I hereby certify that this document was researched and prepared by me or under my direct supervision and that I am a licensed Land Surveyor under the laws of the State of Minnesota.

Signature [Signature]

Date 1/11/18 License No. 49563

Title:

☒ Land Surveyor ☐ Professional Engineer  
☐ County Surveyor ☐ County Engineer

DOCUMENT NUMBER A 357457  
Certified, Filed and or Recorded on  
March 03, 2018 9:20 AM

[Signature] RS

NOBLES COUNTY RECORDER  
LYNN M. WILSON  
507-295-5258

Pages: 2

**Statement of Evidence:**

A-19

North Quarter Corner of Section 2, Township 103 North, Range 41 West, 5<sup>th</sup> Principal Meridian, Nobles County, Minnesota.

1868-Deputy Surveyor Thomas B. Walker set a post in mound with pits for the section corner.

1989-State Aid Road No. 16 plans shows corner at Station 185+00.74

1990-Nobles County Highway Department "Corner Ties Book" calls for a 11" bridge pin being placed at the corner location.

1991-Nobles County Highway Department "Corner Ties Book" calls for a steel pin at the corner location after grading.

2017-On November 8th, Westwood Professional Services found a PK nail and 2 Highway Department ties which fit the monument. Pulled the PK and did not have a magnetic reading underneath. The found PK misses single proportion by 3.17 ft. and is online with the field line running north. The stationing shown on S.A.R. No. 16 plans to the NE corner of Section 2 fits the current distance within 0.3 ft. Accepting the found PK as the position of the corner.

Analysis of the recovered data, field evidence and survey measurements, indicates that the monument found is the correct perpetuation of this corner. For additional information concerning this corner please contact Westwood Professional Services.

*[Handwritten signature]*  
8/1/11