

5/4
sec 5
104
41

Index E-7

CERTIFICATE OF LOCATION OF GOVERNMENT CORNER

NORTH QUARTER Corner of Section 8, Township 104N, Range 41W

5th Principal Meridian, State of Minnesota, County of Nobles.

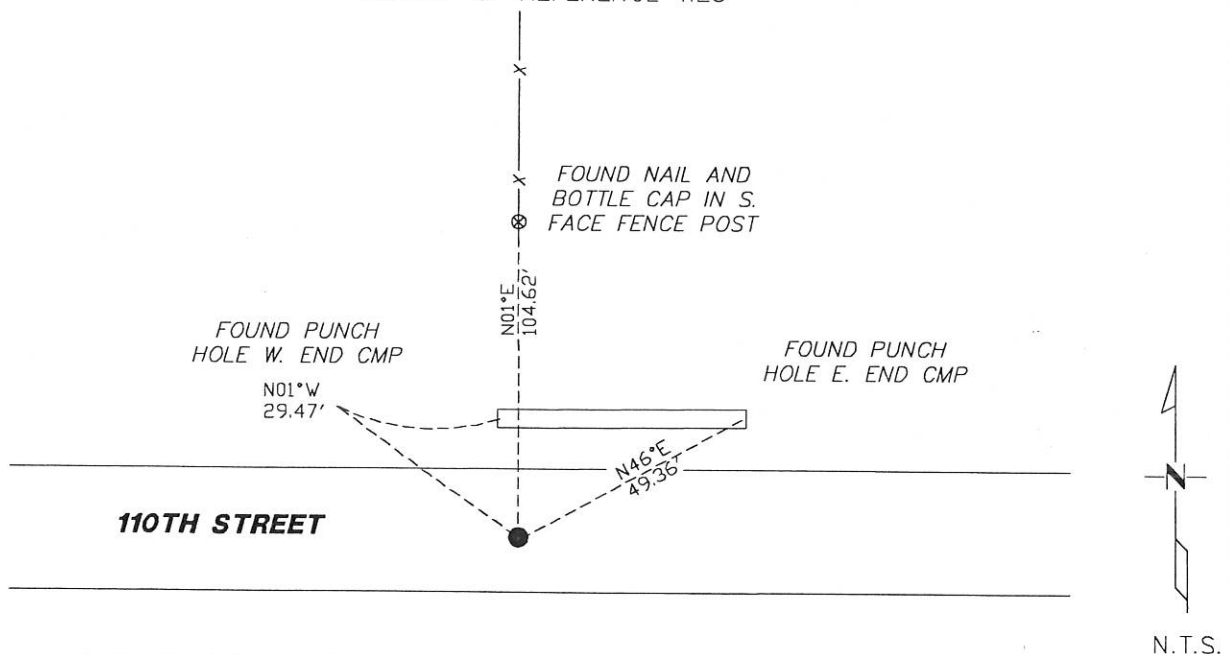
At the corner location shown on the sketch:

☒ On 11/28/2017 found a 5/8" REBAR ON CENTERLINE AND A FENCE LINE TO THE NORTH
DATE

☒ left monument as found ☐ lowered monument ☐ removed monument (explain)

☐ On _____ placed a _____
DATE

SKETCH OF REFERENCE TIES



Statement of evidence for this corner location is on back of this page.

I hereby certify that this document was researched and prepared by me or under my direct supervision and that I am a licensed Land Surveyor under the laws of the State of Minnesota.

Signature L. Wilson

Date 1/29/18 License No. 49563

Title:

☒ Land Surveyor ☐ Professional Engineer
☐ County Surveyor ☐ County Engineer

DOCUMENT NUMBER A 357557
Certified, Filed and or Recorded on
March 07, 2018 1:50 PM

Lynn Wilson

NOBLES COUNTY RECORDER
LYNN M. WILSON
507-295-5268

Pages: 2

Statement of Evidence:

E-7

North Quarter Corner of Section 8, Township 104 North, Range 41 West, 5th Principal Meridian, Nobles County, Minnesota.

1868-Deputy Surveyor set a post in mound with pits.

1892- Nobles County Highway Department "Corner Ties Book" calls for a stake marking the corner location.

1932 - Nobles County Highway Department "Corner Ties Book" calls for stone and placed wood stake marking the corner location.

1977 - Nobles County Highway Department "Corner Ties Book" notes a found 2x2 hub and stone down 28" marking the corner location.

1979 - MNDOT ROW plans show a stationing of 77+66.89. Measurement to the NW of 8 is 2660.80 and 2627.31 to the NE of 8.

1980 - Nobles County Highway Department "Corner Ties Book" notes a 5/8" x 24" iron pin placed to mark the corner location. The following ties were made:

Top of UGTCM	NW	88.48'
Bottom Bolt of yield sign	NW	75.46'
Bottom Bolt of yield sign	SE	53.82'

2012 - Perry Zieske, LS 23008, survey shows a monument in place and a distance of 2627.69' to the SE of 5 and a distance of 5213.02 to the N1/4 of 5.

2017-On November 28th, Westwood Professional Services recovered a 5/8" rebar down 0.8' on centerline and a fence line to the north. Yield signs were found both northwest and southeast, but do not fit distance to 1980 ties. Westwood measures 2627.54 to the SE of 5 which agrees with 2012 Zieske measurement and MNDOT ROW plans. Ties were found or set as shown on the front of this certificate.

Analysis of the recovered data, field evidence and survey measurements, indicates that the monument found is the correct perpetuation of this corner. For additional information concerning this corner please contact Westwood Professional Services.