

BS
S1/4
SEC 7
104
41

COPY

Index J-3

CERTIFICATE OF LOCATION OF GOVERNMENT CORNER

NORTH QUARTER Corner of Section 18, Township 104N, Range 41W

5th Principal Meridian, State of Minnesota, County of Nobles.

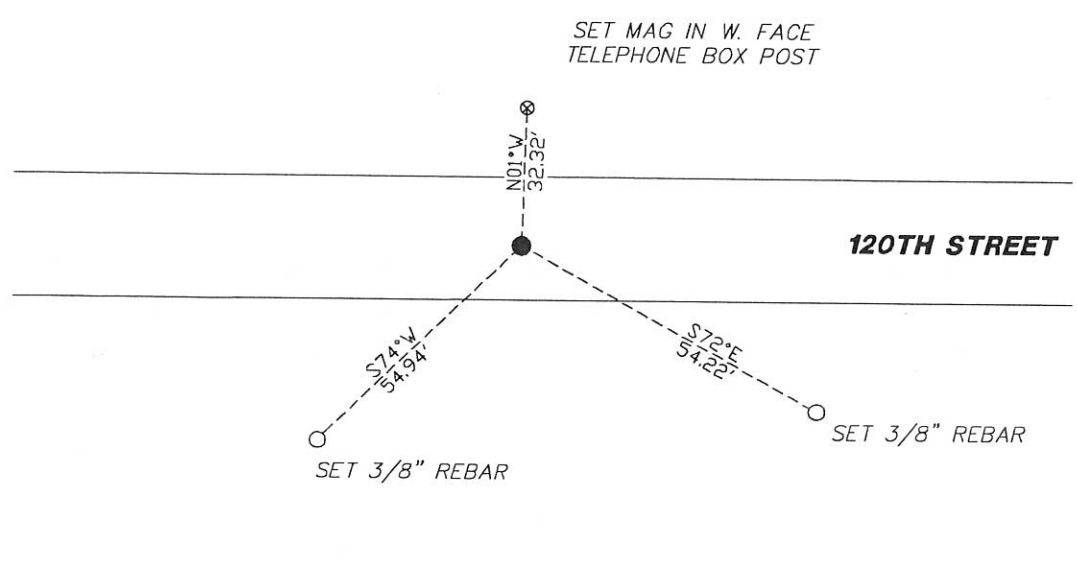
At the corner location shown on the sketch:

On 11/29/2017 found a 1/2" REBAR WITH AN ILLEGIBLE LS CAP DOWN 0.4'
DATE

left monument as found lowered monument removed monument (explain)

On _____ placed a _____
DATE

SKETCH OF REFERENCE TIES



Statement of evidence for this corner location is on back of this page.

I hereby certify that this document was researched and prepared by me or under my direct supervision and that I am a licensed Land Surveyor under the laws of the State of Minnesota.

Signature LSW

Date 1/29/18 License No. 49563

Title:

- Land Surveyor Professional Engineer
- County Surveyor County Engineer

DOCUMENT NUMBER A 357575
Certified, Filed and or Recorded on
March 07, 2018 3:20 PM

Lynn M. Wilson

NOBLES COUNTY RECORDER
LYNN M. WILSON
507-295-5268

Pages: 2

KRIS WROOLIE
Minnesota License No. 49563

Statement of Evidence:

J-3

North Quarter Corner of Section 18, Township 104 North, Range 41 West, 5th Principal Meridian, Nobles County, Minnesota.

1868-Deputy Surveyor set a post in mound with pits.

1896 - Nobles County Highway Department "Corner Ties Book" notes a stone set to mark the corner location. A distance of 2658.4 is given to the NE18 and 2548 is given to the NW18.

1937 - Nobles County Highway Department "Corner Ties Book" notes a stone marking the corner location.

2017-On November 29th, Westwood Professional Services recovered a #4 rebar with illegible LS cap down 0.4'. Westwood measures 2657.63 to the NE18 and 2550.21 to the NW18 which agrees with 1896 measurements. Ties were found or set as shown on the front of this certificate.

Analysis of the recovered data, field evidence and survey measurements, indicates that the monument found is the correct perpetuation of this corner. For additional information concerning this corner please contact Westwood Professional Services.



Handwritten signature and date: 1/25/18