

SW Sec 1 104 41

COPY

Index E-21

# CERTIFICATE OF LOCATION OF GOVERNMENT CORNER

NORTHEAST Corner of Section 11, Township 104N, Range 41W

5th Principal Meridian, State of Minnesota, County of Nobles.

At the corner location shown on the sketch:

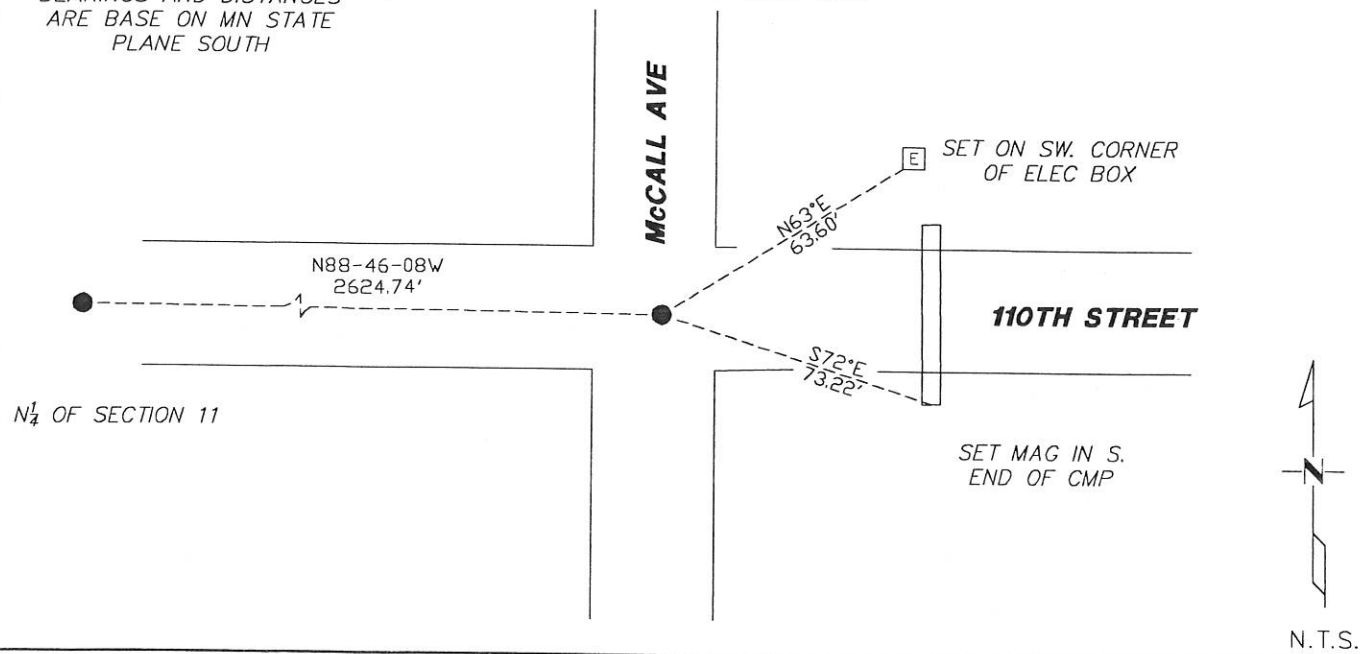
On 11/28/2017 found a 5/8" FLUSH WITH BITUMINOUS ROADWAY.  
DATE

left monument as found     lowered monument     removed monument (explain)

On \_\_\_\_\_ placed a \_\_\_\_\_  
DATE

BEARINGS AND DISTANCES  
ARE BASE ON MN STATE  
PLANE SOUTH

### SKETCH OF REFERENCE TIES



Statement of evidence for this corner location is on back of this page.

I hereby certify that this document was researched and prepared by me or under my direct supervision and that I am a licensed Land Surveyor under the laws of the State of Minnesota.

Signature TF Wilson

Date 1/29/18 License No. 49563

Title:

- Land Surveyor     Professional Engineer
- County Surveyor     County Engineer

DOCUMENT NUMBER A 357565  
Certified, Filed and or Recorded on  
March 07, 2018 2:30 PM

*Lynn M. Wilson*

NOBLES COUNTY RECORDER  
LYNN M. WILSON  
507-295-5268

Pages: 2

**Statement of Evidence:**

E-21

Northeast Corner of Section 11, Township 104 North, Range 41 West, 5<sup>th</sup> Principal Meridian, Nobles County, Minnesota.

1868-Deputy Surveyor set a post in mound with pits.

1901 - Nobles County Highway Department "Corner Ties Book" calls for a stone marking the corner location.

1903 - In Book 22, Page 130, the County Surveyor's section breakdown does not indicate the type of monument, but gives distances to the following corners:

1928 - Nobles County Highway Department "Corner Ties Book" calls for a stone marking the corner location

1962 - Nobles County Highway Department "Corner Ties Book" calls for a stake marking the corner location.


1970 - Nobles County Highway Department "Corner Ties Book" calls for an iron pipe marking the corner location and the following ties were made:

1979 - MNDOT ROW plans indicate a station of 262+86.51 at the corner location. A measurement of 2625.41 is shown to the N1/4 of 11.

1992 - MNDOT ROW plans indicate a station of 105+85.74. Measurement to the E1/4 of 11 is 2639.8 and 2655.38 to the E1/4 of 2.

1993 - Nobles County Highway Department "Corner Ties Book" notes a 3/4" by 18" rebar was set.

2017-On November 28th, Westwood Professional Services recovered a 5/8" rebar flush in bituminous roadway. Westwood measures 2624.74' to the N1/4 of 11 and 2654.94' to the E1/4 of 2. Measurements agree with record distances. Ties were found or set as shown on the front of this certificate.

Analysis of the recovered data, field evidence and survey measurements, indicates that the monument found is the correct perpetuation of this corner. For additional information,  2/19/11  
concerning this corner please contact Westwood Professional Services.