

SW Sec 11 104 41

COPY

Index J-17

CERTIFICATE OF LOCATION OF GOVERNMENT CORNER

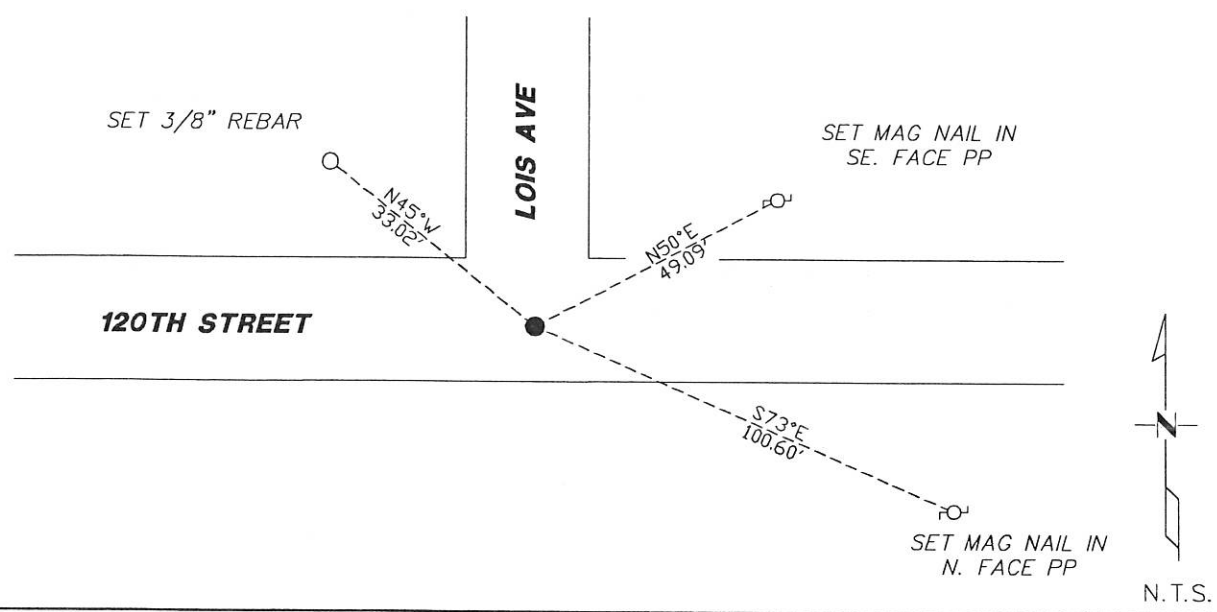
NORTHEAST Corner of Section 15, Township 104N, Range 41W

5th Principal Meridian, State of Minnesota, County of Nobles.

At the corner location shown on the sketch:

- On 11/27/2017 found a 5/8" REBAR DOWN 1.7' AT THE CENTERLINE INTERSECTION
DATE
- left monument as found lowered monument removed monument (explain)
- On _____ placed a _____
DATE

SKETCH OF REFERENCE TIES



Statement of evidence for this corner location is on back of this page.

I hereby certify that this document was researched and prepared by me or under my direct supervision and that I am a licensed Land Surveyor under the laws of the State of Minnesota.

Signature *T. Wilson*

Date 1/29/18 License No. 49563

Title:

- Land Surveyor Professional Engineer
- County Surveyor County Engineer

DOCUMENT NUMBER A 357569
Certified, Filed and or Recorded on
March 07, 2018 2:50 PM

Lynn M. Wilson

NOBLES COUNTY RECORDER
LYNN M. WILSON
507-295-5268

Pages: 2

Statement of Evidence:

J-17

Northeast Corner of Section 15, Township 104 North, Range 41 West, 5th Principal Meridian, Nobles County, Minnesota.

1868-Deputy Surveyor set a post in mound with pits.

1903 - The County Surveyor in Book 22, Page 135 gives distance of 2656.5 to the N1/4 of 14, 2656.5 to the N1/4 of 15, and 2652.6 to the E1/4 of 15.

1937 - Nobles County Highway Department "Corner Ties Book" notes a stake marking the corner location.

2010 - Perry Zieske, LS 23008, survey shows a 5/8" iron stake at the corner location. A distance of 2654.19 is given to the E1/4 of 10 and 2659.16 to the S1/4 of 10.

2017-On November 27th, Westwood Professional Services recovered a 5/8" rebar down 1.7' on centerline of east/west/north roadways. Westwood measures 2654.03 to the E1/4 of 10 which agrees with the Zieske survey. Ties were found or set as shown on the front of this certificate.

Analysis of the recovered data, field evidence and survey measurements, indicates that the monument found is the correct perpetuation of this corner. For additional information concerning this corner please contact Westwood Professional Services.

[Handwritten signature]
2/15/17