

SW sec 14 104 41

COPY

Index N-17

# CERTIFICATE OF LOCATION OF GOVERNMENT CORNER

NORTHEAST Corner of Section 22, Township 104N, Range 41W

5th Principal Meridian, State of Minnesota, County of Nobles.

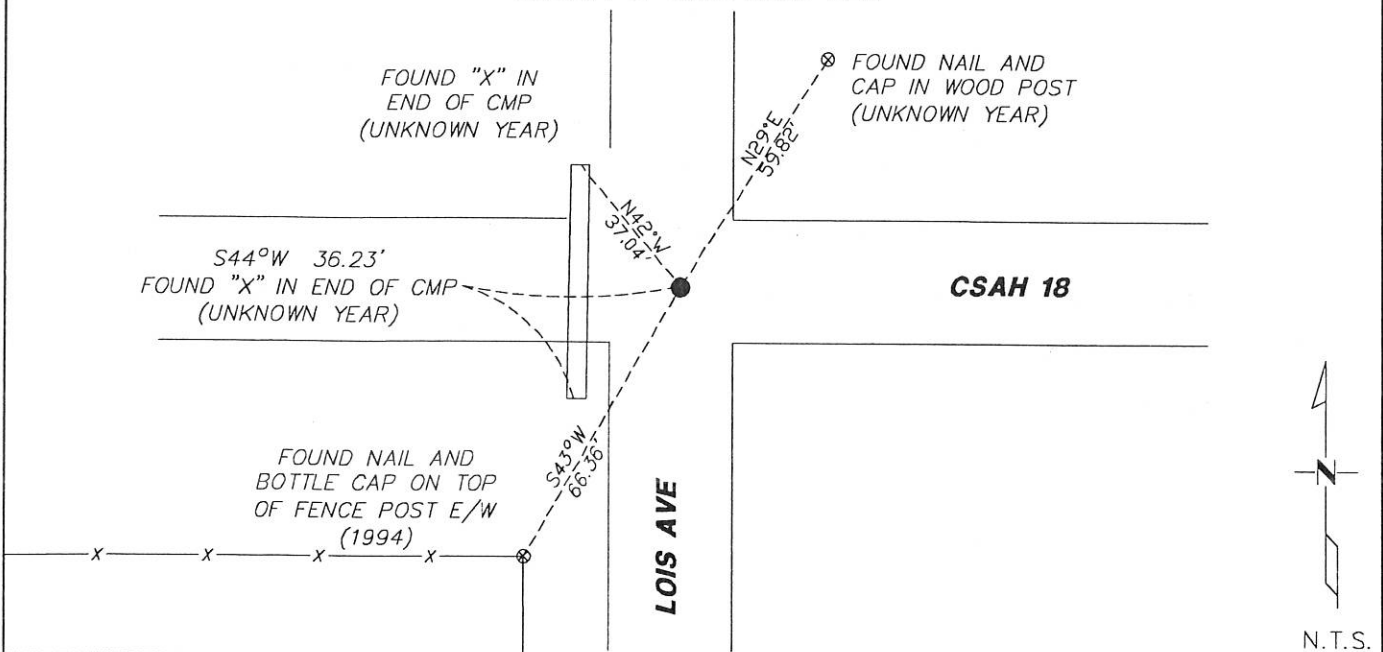
At the corner location shown on the sketch:

☒ On 11/09/2017 found a 1/2" REBAR AT THE CENTERLINE INTERSECTION  
DATE

☒ left monument as found ☐ lowered monument ☐ removed monument (explain)

☐ On \_\_\_\_\_ placed a \_\_\_\_\_  
DATE

## SKETCH OF REFERENCE TIES



Statement of evidence for this corner location is on back of this page.

I hereby certify that this document was researched and prepared by me or under my direct supervision and that I am a licensed Land Surveyor under the laws of the State of Minnesota.

Signature TSWL

Date 1/29/18 License No. 49563

Title:

☒ Land Surveyor ☐ Professional Engineer  
☐ County Surveyor ☐ County Engineer

DOCUMENT NUMBER A 357585

Certified, Filed and or Recorded on

March 08, 2018 8:15 AM

Lynn Wilson

NOBLES COUNTY RECORDER

LYNN M. WILSON

507-295-5266

Pages: 2

**Statement of Evidence:**

N-17

Northeast Corner of Section 22, Township 104 North, Range 41 West, 5<sup>th</sup> Principal Meridian, Nobles County, Minnesota.

1868-Deputy Surveyor set a post in mound with pits.

1928 - Nobles County Highway Department "Corner Ties Book" notes a stone marking the corner location.

1954 - Nobles County Highway Department "Corner Ties Book" notes stone found and a wood stake placed to mark the corner location.

1982 - Nobles County Highway Department "Corner Ties Book" notes a trace of stake and small stone which were assumed correct to mark the corner location.

1983 - CSAH 18 highway plans show the corner location at station 210+85.53.

1994 - Nobles County Highway Department "Corner Ties Book" notes a 1 3/4" PK nail set after an overlay. The following ties were made:

|                                      |       |        |
|--------------------------------------|-------|--------|
| Nail/Bottle cap in cor fence post    | South | 51.37' |
| Nail/Bottle cap in power pole        | SE    | 68.15' |
| Nail/Bottle cap in 1st post W of cor | SW    | 66.36' |

2017 - Westwood field crews recover a 1/2" rebar and one tie from 1994. Ties were found or set as shown on the front of this certificate.

Analysis of the recovered data, field evidence and survey measurements, indicates that the monument found is the correct perpetuation of this corner. For additional information concerning this corner please contact Westwood Professional Services.

*[Handwritten signature]*  
8/19/17