

5W Sec 15 104 41

COPY

Index N-13

CERTIFICATE OF LOCATION OF GOVERNMENT CORNER

NORTHEAST Corner of Section 21, Township 104N, Range 41W

5th Principal Meridian, State of Minnesota, County of Nobles.

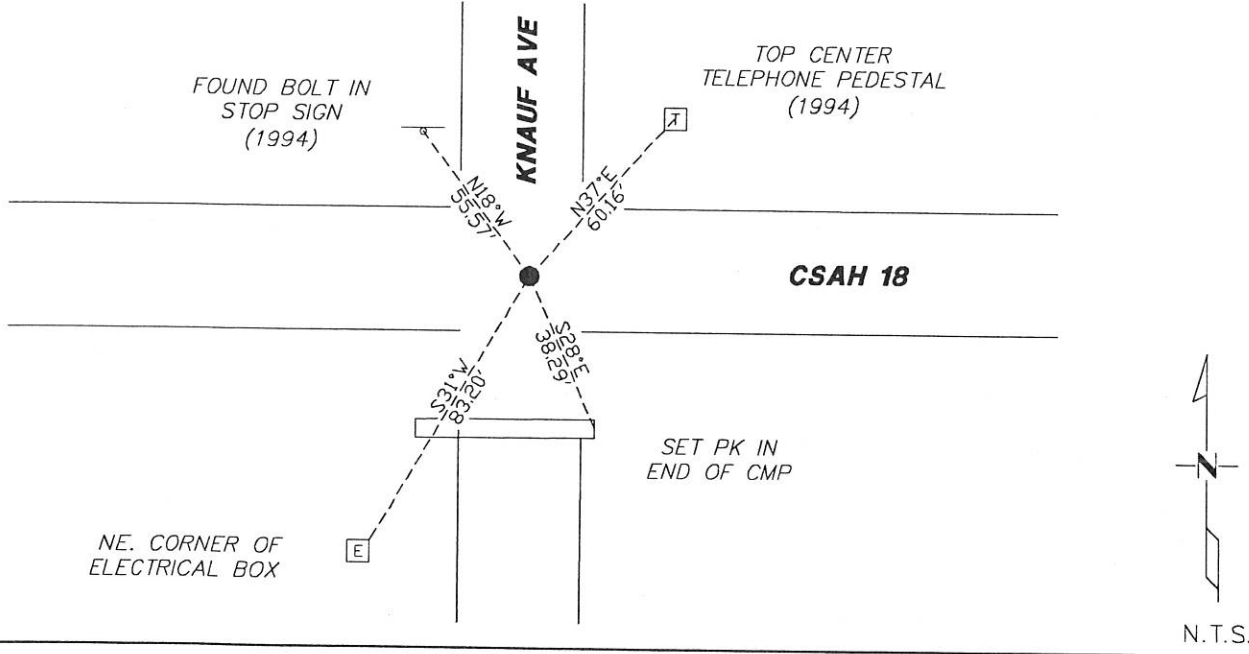
At the corner location shown on the sketch:

On 11/10/2017 found a 5/8" REBAR AT THE CENTERLINE INTERSECTION
DATE

left monument as found lowered monument removed monument (explain)

On _____ placed a _____
DATE

SKETCH OF REFERENCE TIES



Statement of evidence for this corner location is on back of this page.

I hereby certify that this document was researched and prepared by me or under my direct supervision and that I am a licensed Land Surveyor under the laws of the State of Minnesota.

Signature [Handwritten Signature]

Date 1/29/18 License No. 49563

Title:

- Land Surveyor Professional Engineer
- County Surveyor County Engineer

DOCUMENT NUMBER A 357583
Certified, Filed and or Recorded on
March 08, 2018 8:05 AM

[Handwritten Signature]

NOBLES COUNTY RECORDER
LYNN M. WILSON
507-295-5266

Pages: 2

Statement of Evidence:

N-13

Northeast Corner of Section 21, Township 104 North, Range 41 West, 5th Principal Meridian, Nobles County, Minnesota.

1868-Deputy Surveyor set a post in mound with pits

1928 - Nobles County Highway Department "Corner Ties Book" notes a stone marking the corner location.

1935 - Nobles County Highway Department "Corner Ties Book" notes a stone marking the corner location.

1954 - Nobles County Highway Department "Corner Ties Book" notes a stone marking the corner location and a wood stake placed.

1982 - Nobles County Highway Department "Corner Ties Book" notes a stone and wood stake found and an iron pin placed marking the corner location.

1983 - CSAH 18 highway plans show the corner location at station 157+84.06.

1993 - Nobles County Highway Department "Corner Ties Book" notes a 1/2" rod found in bituminous paving by Madsen Surveying. The following ties were made:

1993 - Nobles County Highway Department "Corner Ties Book" notes an iron pin found marking the corner location.

1994 - Nobles County Highway Department "Corner Ties Book" notes a 1 3/4" PK nail set after an overlay. The following ties were made:

Top of tel ped	NE	60.16'
NW cor of elec. box	SE	63.50'
Bottom bolt stop sign	NW	54.90'
Near edge steel fen post	SW	81.00'

2017 - Westwood field crews recover a #5 rebar and two ties from County Highway Department Monument fits ties. Ties were found or set as shown on the front of this certificate.

[Handwritten signature]
01/18/17