

CERTIFICATE OF LOCATION OF GOVERNMENT CORNER

NORTHEAST Corner of Section 19, Township 104N, Range 41W

5th Principal Meridian, State of Minnesota, County of Nobles.

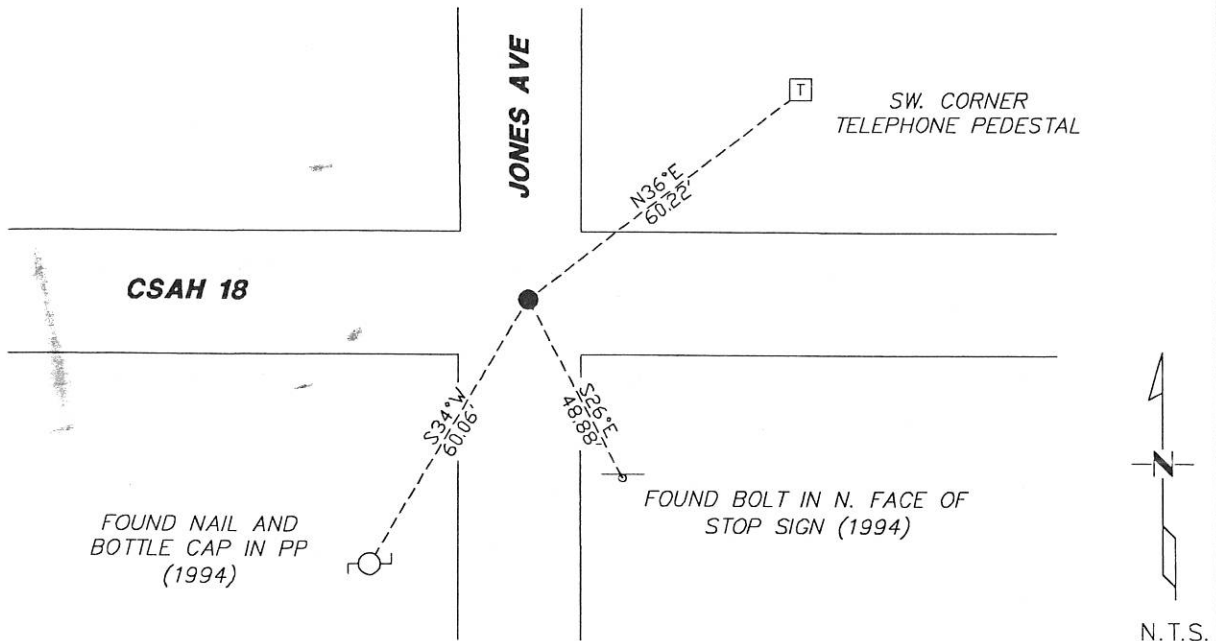
At the corner location shown on the sketch:

☒ On 11/10/2017 found a PK NAIL AT NORTH/SOUTH/EAST/WEST CENTERLINE INTERSECTION.
DATE

☒ left monument as found ☐ lowered monument ☐ removed monument (explain)

☐ On _____ placed a _____
DATE

SKETCH OF REFERENCE TIES



Statement of evidence for this corner location is on back of this page.

I hereby certify that this document was researched and prepared by me or under my direct supervision and that I am a licensed Land Surveyor under the laws of the State of Minnesota.

Signature *Lynn M. Wilson*

Date 1/29/18 License No. 49563

Title:

☒ Land Surveyor ☐ Professional Engineer
☐ County Surveyor ☐ County Engineer

DOCUMENT NUMBER A 357579

Certified, Filed and or Recorded on
March 07, 2018 3:40 PM

Lynn M. Wilson

NOBLES COUNTY RECORDER
LYNN M. WILSON
507-295-5268

Pages: 3

Statement of Evidence:

N-5

Northeast Corner of Section 19, Township 104 North, Range 41 West, 5th Principal Meridian, Nobles County, Minnesota.

1868-Deputy Surveyor Richard N. L. Jeorlt, set a post in mound with pits for the section corner.

1895-On September 16th, in Surveyor's Record Book A-2, page 202, prepared by County Surveyor M.S. Smith, shows he found the original stake with the mound and pits at the corner position. Set an iron gas pipe, 2.9' x 2".

1895-Nobles County Highway Department "Corner Ties Book" calls for an iron pin as the corner position.

1928-Nobles County Highway Department "Corner Ties Book" calls for an iron pin as the corner position.

1937-Nobles County Highway Department "Corner Ties Book" calls for an iron pin as the corner position.

1954-Nobles County Highway Department "Corner Ties Book" calls for an iron pin as the corner position. Placed wood stake.

1982-Nobles County Highway Department "Corner Ties Book" calls for an iron pin and wood stake as the corner position.

1983-C.S.A.H. No. 18 shows corner location at Station 51+96.98. It appears to be at N/S/E/W centerline intersection.

1993-Nobles County Highway Department "Corner Ties Book" calls for a found iron pin as the corner position.

1994-Nobles County Highway Department "Corner Ties Book" calls for placing a 1-3/4" PK nail after an overlay at the corner position.

Ties-

N&BC IN PP S.W. 60.06'

TOP OF TEL PED N.E. 60.82'

BOTTOM BOLT IN STOP SIGN POST S.E. 48.88'

Handwritten:
Bl/PS/11

COPY

KRIS WROOLIE
Minnesota License No. 49563

2011-A survey dated 09/13/2011 prepared by Perry L. Zieske, for project number N 1016 S, shows a PK nail being inplace for the corner position.

2011-Nobles County Highway Department "Corner Ties Book" calls for a found PK nail at the corner position.

2017 - Matthew Runke, LS 46171, files Certificate of Location as Document Number 354950 and gives measurements around section 17

2017-On November 10th, Westwood Professional Services found a PK nail at N/S/E/W centerline intersection and the 3 1994 Highway Department ties. Pulled PK and found a magnetic beep underneath. Dig not dig it up due to new bituminous. Replaced PK nail to it's found location. The PK fits C.S.A.H. No. 18 stationing, 1994 Nobles County Highway Department ties, distances shown of the 2011 Zieske survey and distances shown on Document Number 354950. Accepting the found PK nail as the position of the corner.

Analysis of the recovered data, field evidence and survey measurements, indicates that the monument found is the correct perpetuation of this corner. For additional information concerning this corner please contact Westwood Professional Services.