

SW  
Sec 19  
104  
41

COPY

Index R-25

# CERTIFICATE OF LOCATION OF GOVERNMENT CORNER

NORTHEAST Corner of Section 25, Township 104N, Range 42W

5th Principal Meridian, State of Minnesota, County of Nobles.

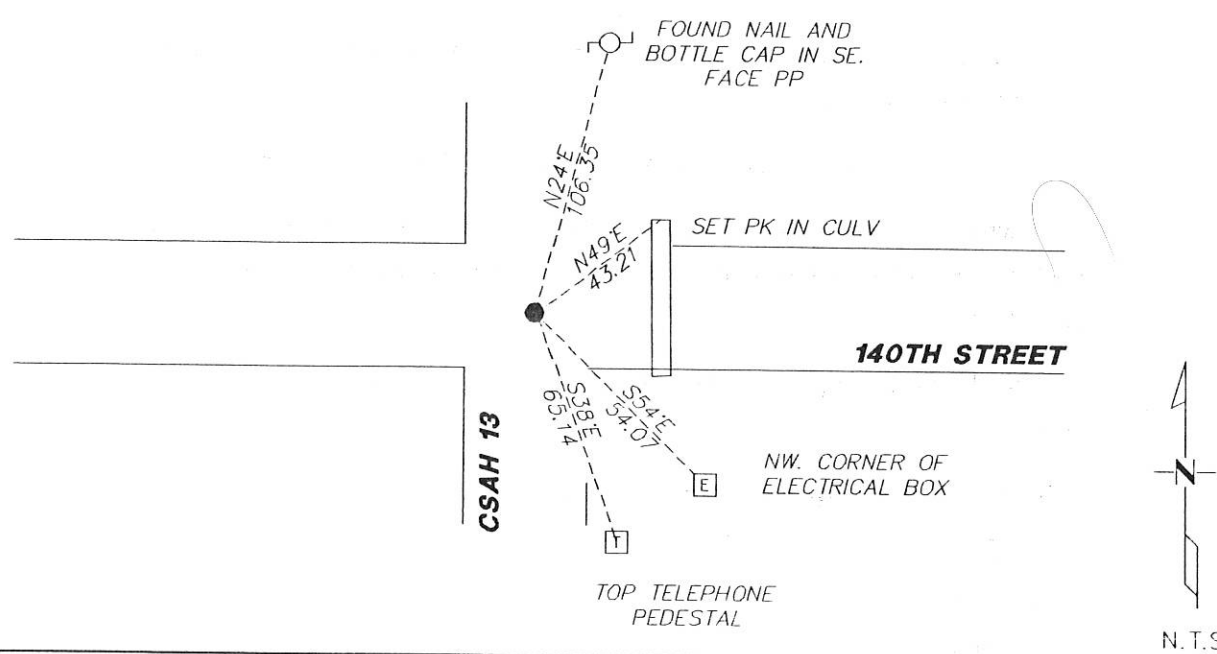
At the corner location shown on the sketch:

On 11/09/2017 found a RAILROAD SPIKE DOWN 0.6' ON CENTERLINE INTERSECTION.  
DATE

left monument as found       lowered monument       removed monument (explain)

On \_\_\_\_\_ placed a \_\_\_\_\_  
DATE

### SKETCH OF REFERENCE TIES



Statement of evidence for this corner location is on back of this page.

I hereby certify that this document was researched and prepared by me or under my direct supervision and that I am a licensed Land Surveyor under the laws of the State of Minnesota.

Signature Lynn M. Wilson

Date 2/7/18 License No. 49563

Title:

- Land Surveyor       Professional Engineer
- County Surveyor       County Engineer

DOCUMENT NUMBER A 357518

Certified, Filed and or Recorded on  
March 07, 2018 8:25 AM

*Lynn M. Wilson*

NOBLES COUNTY RECORDER  
LYNN M. WILSON  
507-295-5268

Pages: 2

**Statement of Evidence:**

R-25

Northeast Corner of Section 25, Township 104 North, Range 42 West, 5<sup>th</sup> Principal Meridian, Nobles County, Minnesota.

1868-T.B. Walker set a post in mound with pits for the section corner.

1900-Nobles County Highway Department "Corner Ties Book" calls for a stone as the corner position.

1923-Nobles County Highway Department "Corner Ties Book" calls for a stone as the corner position.

1950-Nobles County Highway Department "Corner Ties Book" calls for a stone as the corner position. Placed wood stake.

1951-C.S.A.H. No. 13 highway plans shows a stone 6.0 ft. East of Station 105+92.6

1969-Minnesota Conservation Department completed a survey in the SW1/4 of Sec. 19 T.104 R.41, file no. G-502. Distance between the SW corner and the W1/4 corner is shown to be 2646.22 ft.

1980-Nobles County Highway Department "Corner Ties Book" calls for an iron pin as the corner position.

1994-Nobles County Highway Department "Corner Ties Book" calls for a 1-3/4" PK nail being placed at the corner position after an overlay.

N&D IN PP N.E. 106.35'

N&D IN PP S.E. 101.10'

TOP OF UGTCM S.E. 65.13'

2017- Westwood Professional Services found a railroad spike and 2 Nobles County Highway Department ties. Location of railroad spike fits record distances and ties from County Highway Department "Corner Ties Book." Ties were found or set as shown on the front of this certificate.

Analysis of the recovered data, field evidence and survey measurements, indicates that the monument found is the correct perpetuation of this corner. For additional information concerning this corner please contact Westwood Professional Services.